

## OVERALL STATUS



## KEY PROJECT METRICS



PRODUCT DESIGN  
100%



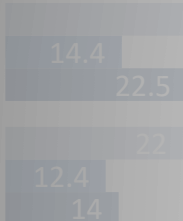
LOGISTICS  
78%



ASSEMBLY  
48%

# MoDOT *Project Scheduling* TOOL

Jeff Cremer - MoDOT  
Professional Services Coordinator  
[Jeffrey.Cremer@modot.mo.gov](mailto:Jeffrey.Cremer@modot.mo.gov)  
573-751-3705



JAN

FEB

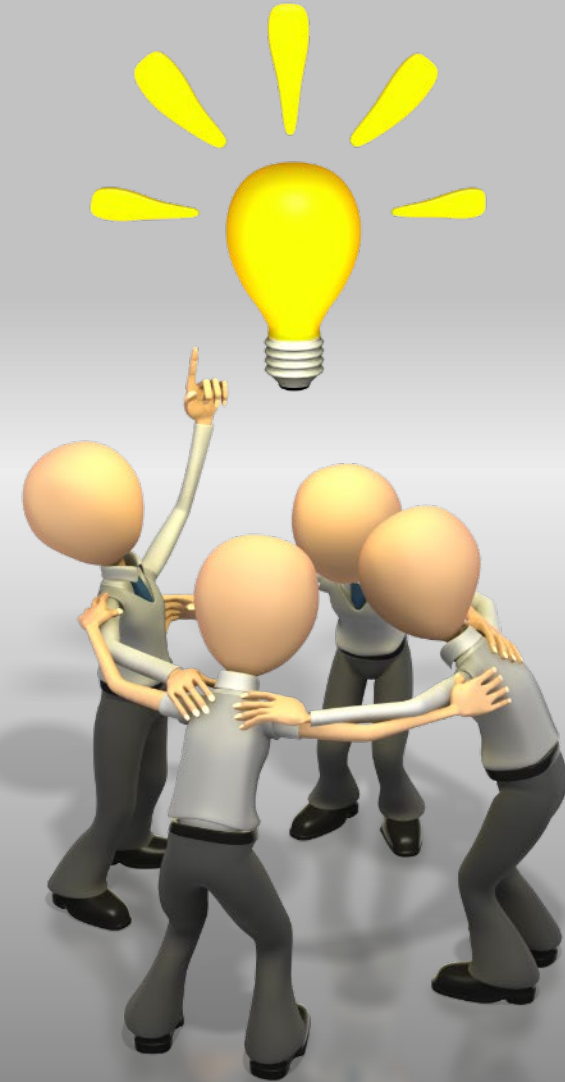
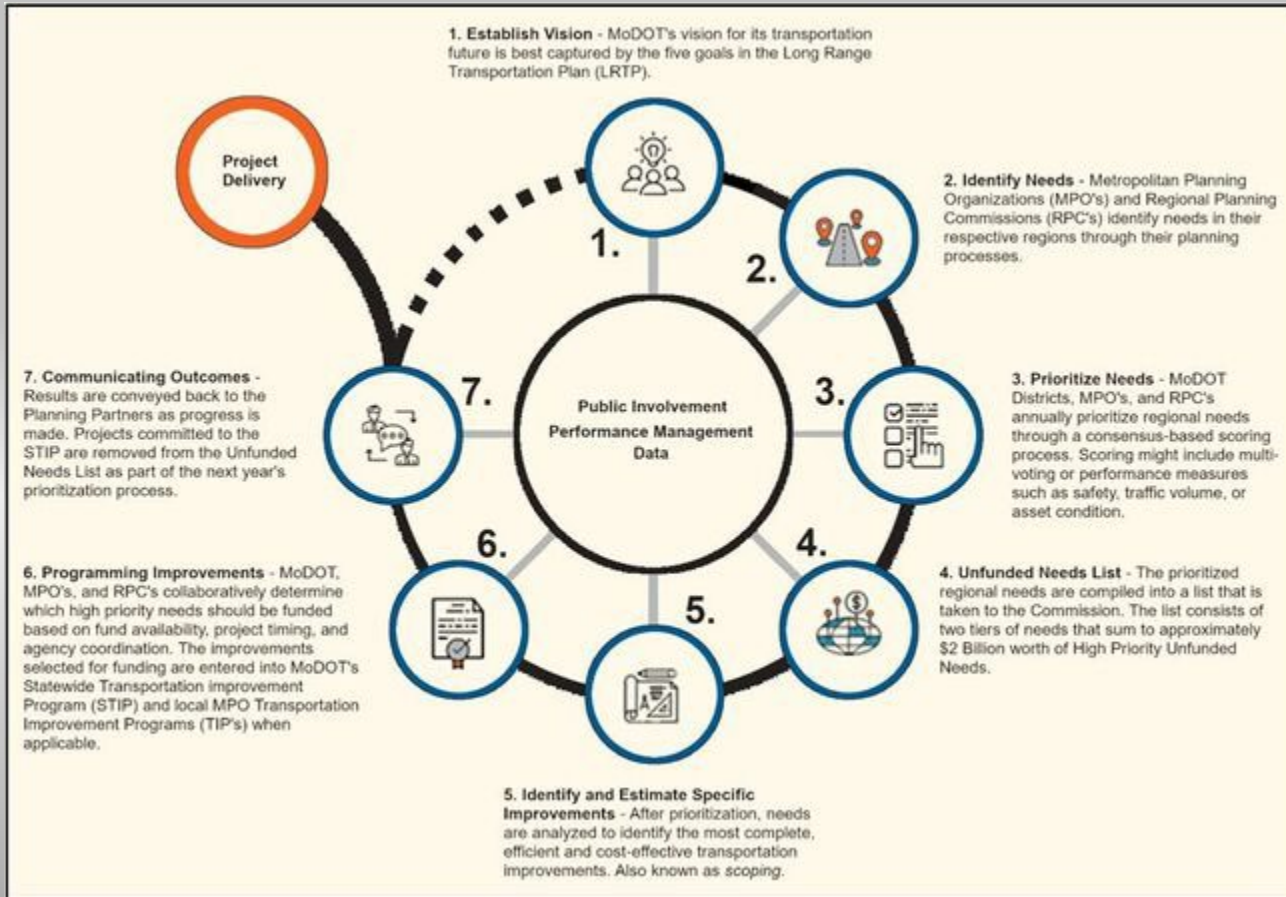
MAR

APR

MAY

JUN

# MoDOT Planning Framework



**Nationally Recognized Public Involvement**  
Public is Engaged – Involved - Informed

# Engineering Policy Guide



## ENGINEERING POLICY GUIDE

Main Page  
100 General  
136 LPA Policy  
200 Geometrics  
300 Bases  
400 Flexible Pavement  
500 Rigid Pavement  
600 Incidental Construction  
700 Structures and Hydraulics  
800 Roadside Development  
900 Traffic Control  
1000 Materials  
1100 Maintenance Materials  
Quick Reference Guides  
Help

Search Options

Search the EPG using  
Google Search

Contact Us

Report a Broken Link

Other MoDOT  
Standards

Specifications  
Standard Plans  
Job Special Provisions  
Design Standard Letters  
Bid Items  
Engineering Policy  
Revision Request Form

Tools

What links here  
Related changes

Main Page

Read

View history

Search Engineering Policy Guide

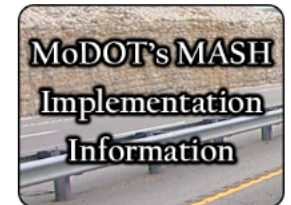
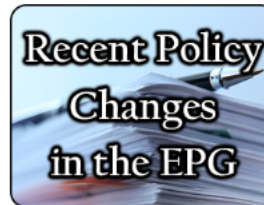


## Main Page



## Engineering Policy Guide

*Our mission is to provide a world-class transportation system that is safe, innovative, reliable and dedicated to a prosperous Missouri.*



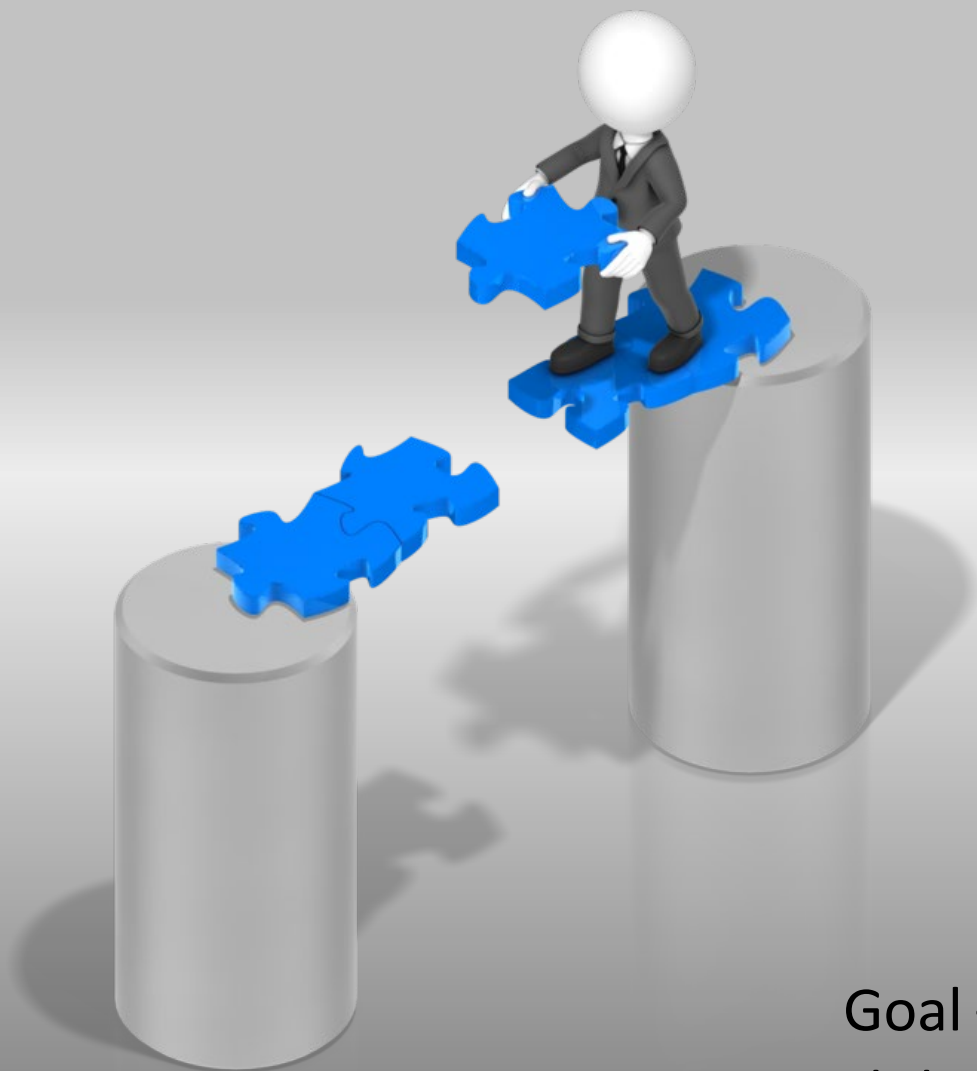
MoDOT's three pillars of "Safety, Service and Stability" steer our leadership and employees. Our commitment to safety includes keeping both customers and ourselves safe. Our service includes providing outstanding customer service, delivering transportation solutions of great value and using resources wisely. Keeping roads and bridges in good condition, operating a reliable and convenient transportation system, and advancing Missouri's economic development reflect our commitment to stability. Innovative concepts, such as [Practical Design](#) and [design-build](#), are used to deliver our commitments. These and other forward-thinking concepts shape the content of the ENGINEERING POLICY GUIDE (EPG). This document provides a single reference for all engineering and engineering-related [Bridge](#), [Construction](#), [Design](#), [Highway Safety & Traffic](#), [Maintenance](#), [Planning](#) and [Right of Way](#) guidance.



## Standardized Project Delivery

- Consistent
- Transparent
- Collaborative
- Informative

Goal – Provide near-real-time STIP delivery project status data to the public





# How We Got Here – 3<sup>rd</sup> Time is a Charm!



## 1. Primavera

- Too complicated & hard to manage

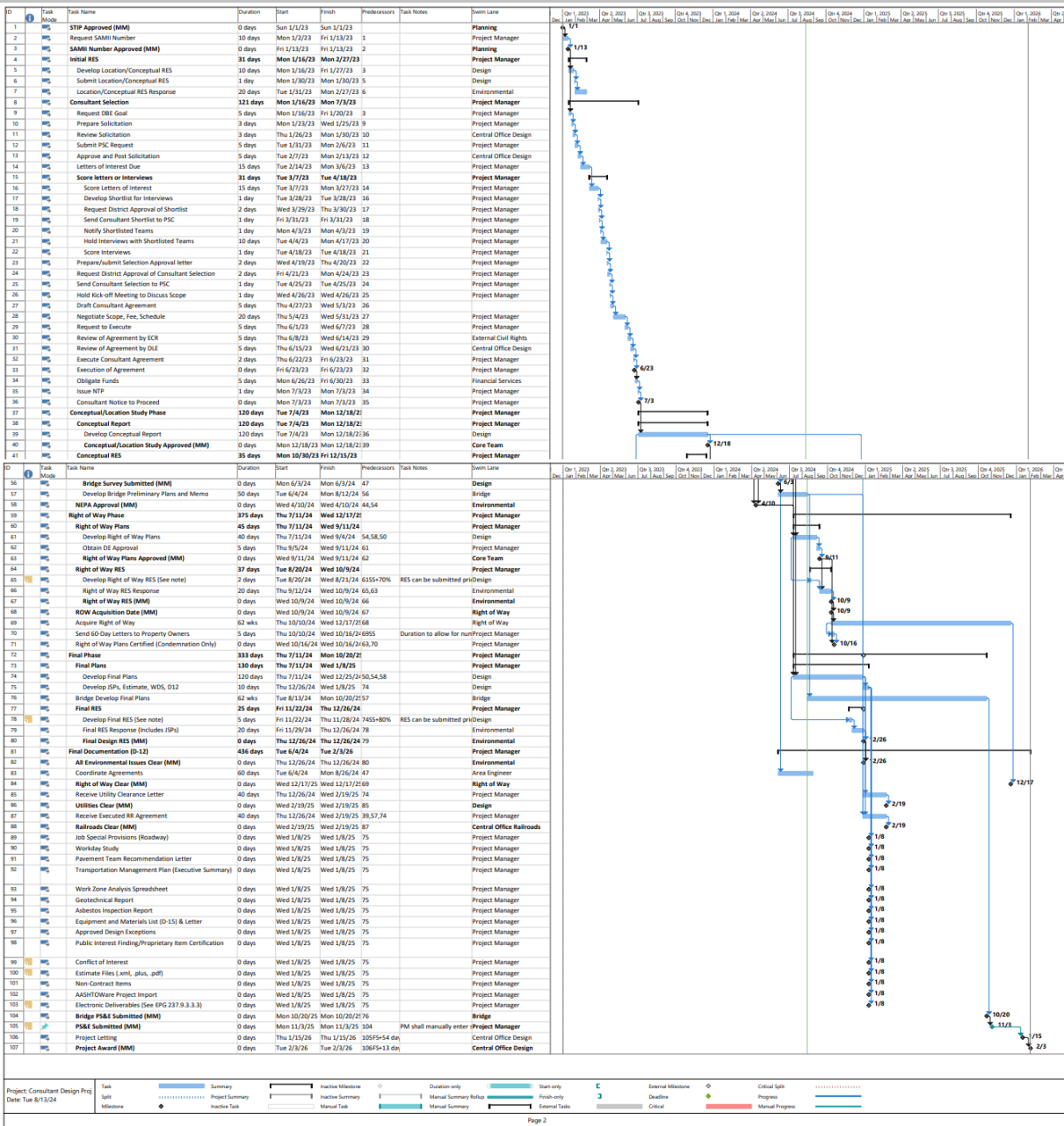
## 2. Red – Yellow – Green Light

- Too easy to beat

## 3. Microsoft Project

- Happy medium on complexity
- Task transparency adds accountability
- Milestones are reportable

## The Process – Schedule Assignment



# Schedule Templates


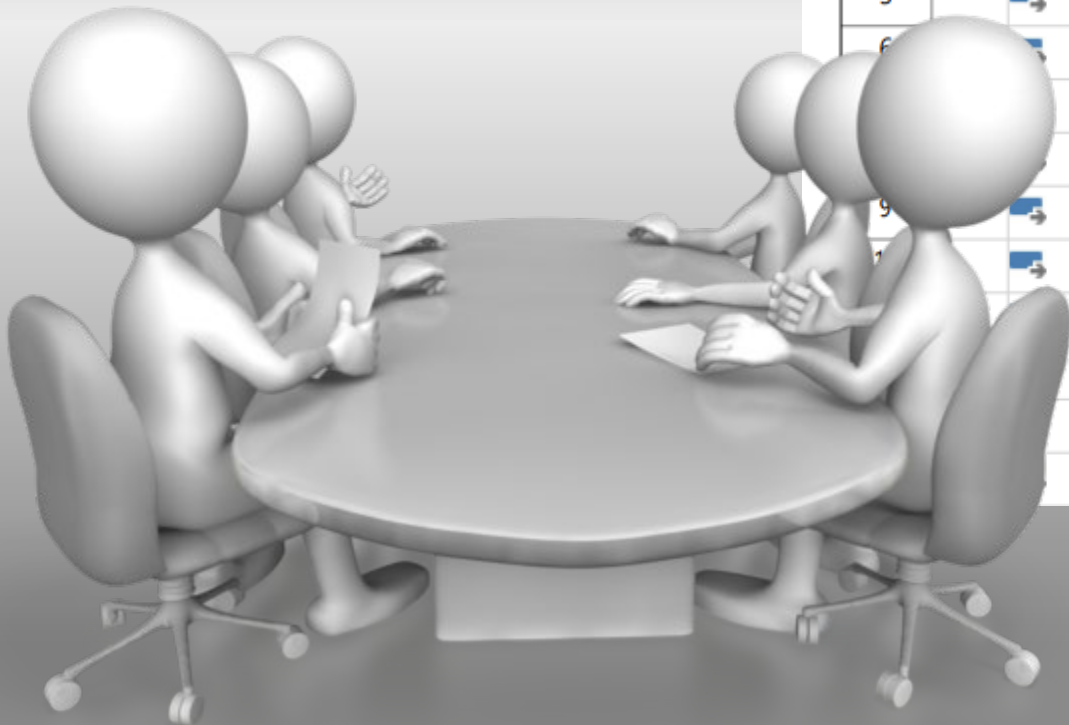
1. Full Design Project
2. Consultant Design Project
3. Consultant On-Call Design Project
4. MoDOT Design Project
5. MoDOT Short Project










\*Optional additional tasks available

# The Process – Setting Schedule Baseline

## Core Team Collaboration

- Discuss tasks needed
- Set durations
- Task Assignment



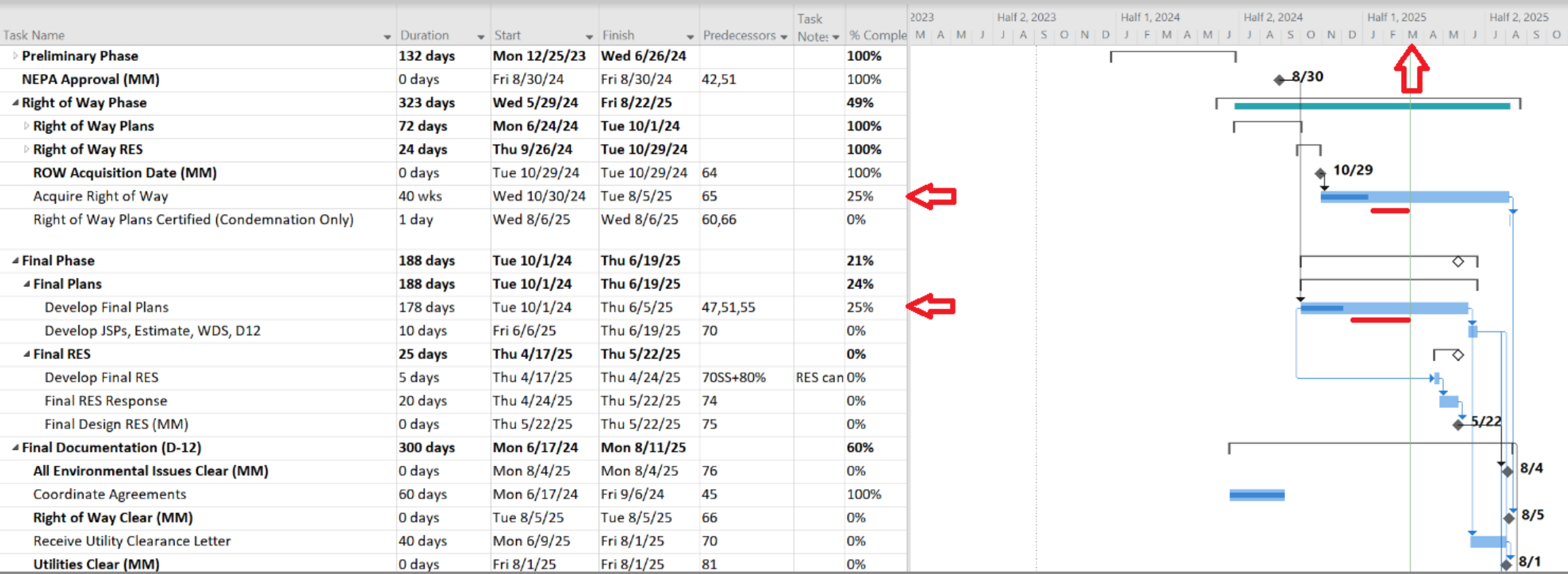
ID		Task Mode	Task Name	Duration	Start	Finish
1			<b>STIP Approved (MM)</b>	0 days	Sun 1/1/23	Sun 1/1/23
2			Request SAMII Number	10 days	Mon 1/2/23	Fri 1/13/23
3			<b>SAMII Number Approved (MM)</b>	0 days	Fri 1/13/23	Fri 1/13/23
4			<b>Initial RES</b>	<b>31 days</b>	<b>Mon 1/16/23</b>	<b>Mon 2/27/23</b>
5			Develop Location/Conceptual RES	10 days	Mon 1/16/23	Fri 1/27/23
6			Submit Location/Conceptual RES	1 day	Mon 1/30/23	Mon 1/30/23
			Location/Conceptual RES Response	20 days	Tue 1/31/23	Mon 2/27/23
			<b>Consultant Selection</b>	<b>113 days</b>	<b>Mon 1/16/23</b>	<b>Wed 6/21/23</b>
9			Request DBE Goal	5 days	Mon 1/16/23	Fri 1/20/23
7			Prepare Solicitation	5 days	Mon 1/23/23	Fri 1/27/23
			Review Solicitation	3 days	Mon 1/30/23	Wed 2/1/23
			Submit PSC Request	5 days	Thu 2/2/23	Wed 2/8/23
			Approve and Post Solicitation	10 days	Thu 2/9/23	Wed 2/22/23
			Letters of Interest Due	0 days	Wed 2/22/23	Wed 2/22/23

# The Process – Schedule Updates

## Schedule Updates - Published

- 30 Days Current STIP Year
- 90 Days STIP Years 2-3
- 120 Days STIP Years 4-5

\* Tasks are updated as the project progresses





# The Process – Communication & Collaboration



## Status Dashboard

Projects					
MM KPI	Project	Project Manager	Since Pub	Letting Date	Note
	SR0108		12		
	SR0108B		12		
	SR0111		12		
	SR0144		12		
	SR0318		12		
	SR0320		12		
	7P3397		12	5/16/2025	
	SR0161		12	10/17/2025	
	SR0162		12	10/17/2025	
	SU0169		12	10/17/2025	
	SR0165		2	12/12/2025	
	SR0195		12	1/1/2026	
	SU0198		12	1/1/2026	
Overdue	SR0057		9	2/1/2026	
	SR0275		12	2/1/2026	
	7P3533D		12	8/1/2026	
	SR0030		12	8/1/2026	
	SR0032		12	8/1/2026	
	SR0034		12	8/1/2026	
Overdue	SR0166		12	8/1/2026	
Overdue	7S3368B		9	12/1/2026	
Late	SR0053B		12	12/1/2026	

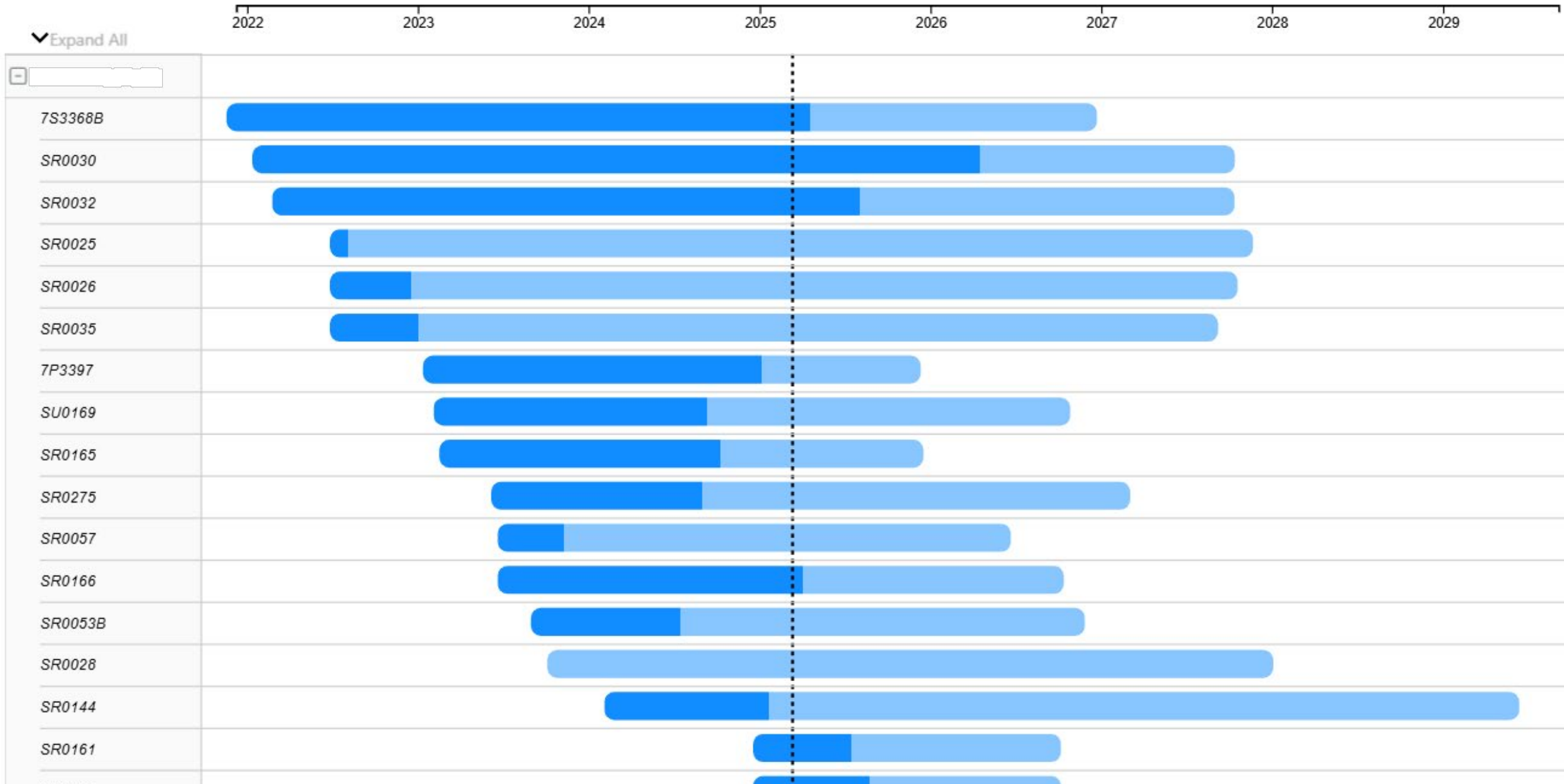
Project	Project Manager
SR0057	
Award Year	Consultant PM
2026	(Blank)
Finish	Consultant Firm
7/13/2026	(Blank)
County	PE Total
TANEY	\$123K
Route	RW Total
BU 65 S	\$2K
District	Construction
SW	\$418.00K
Planning Org	CE Total
SW MO ADVISO...	\$107K
RES Stage	Bridge
Preliminary Pla...	\$0
NEPA Appr	Major Bridge
false	\$0
All Env. Clear	Since Published
false	9
RW Clearance	RW Cond. Clr.
(Blank)	(Blank)
RW Plans Appr.	RW Acq. Auth.
(Blank)	(Blank)
Location Description	
Upgrade pedestrian facilities to comply with the ADA Transition Pla...	
Project Status Note	
(Blank)	

Milestones \ Tasks				
KPI	Project	Milestone	Finish	Note
Completed	SR0057	STIP Approved (MM)	7/12/2023	
Completed	SR0057	SAMII Number Approved (MM)	7/25/2023	
Overdue	SR0057	NEPA Approval (MM)	12/10/2024	
Completed	SR0057	Preliminary RES (MM)	12/10/2024	
Completed	SR0057	Preliminary Plans Approved (MM)	1/31/2025	
Future	SR0057	Right of Way Plans Approved (MM)	4/7/2025	
Future	SR0057	Right of Way RES (MM)	5/5/2025	
Future	SR0057	ROW Acquisition Date (MM)	5/5/2025	
Future	SR0057	All Environmental Issues Clear (MM)	7/21/2025	
Future	SR0057	Final Design RES (MM)	7/21/2025	
Future	SR0057	Railroads Clear (MM)	9/12/2025	
Future	SR0057	Utilities Clear (MM)	9/12/2025	
Future	SR0057	PS&E Submitted (MM)	12/1/2025	38
Future	SR0057	Project Award (MM)	3/10/2026	
Future	SR0057	Bridge PS&E Submitted (MM)	4/10/2026	
Future	SR0057	Right of Way Clear (MM)	7/13/2026	



Overdue Late On Track Future Completed

# The Process – Communication & Collaboration



# The Process – Communication & Collaboration

Upcoming Tasks/Milestones

KPI	Project	Link	Milestone	Planned Finish	Start	Duration	Progress	Project Manager	Task Type
▲	KU0128	<a href="#">🔗</a>	Develop Preliminary RES	3/12/2025	3/11/2025	2	0.00%		Task
▲	KU0140	<a href="#">🔗</a>	Develop Preliminary RES	3/12/2025	3/11/2025	2	0.00%		Task
▲	6I3502	<a href="#">🔗</a>	Develop Preliminary RES	3/14/2025	3/10/2025	5	0.00%		Task
○	6Q2026E	<a href="#">🔗</a>	Develop Preliminary RES	3/18/2025	3/17/2025	2	0.00%		Task
○	SU0169	<a href="#">🔗</a>	Develop Preliminary RES	3/19/2025	3/18/2025	2	0.00%		Task
○	SL0050	<a href="#">🔗</a>	Develop Preliminary RES	3/21/2025	3/20/2025	2	0.00%		Task
○	SL0216	<a href="#">🔗</a>	Develop Preliminary RES	3/21/2025	3/20/2025	2	0.00%		Task
○	KR0104	<a href="#">🔗</a>	Develop Preliminary RES	3/21/2025	3/20/2025	2	0.00%		Task
○	NE0124	<a href="#">🔗</a>	Develop Preliminary RES	3/21/2025	3/20/2025	2	0.00%		Task
○	9S3776	<a href="#">🔗</a>	Develop Preliminary RES	3/25/2025	3/24/2025	2	0.00%		Task

Upcoming Finish

Next ▾ 30 Days ▾

📅 3/12/2025 - 4/10/2025

18  
Task Count

Upcoming Tasks/Milestones

KPI	Project	Link	Milestone	Planned Finish	Start	Duration	Progress	Project Manager	Task Type
▲	KR0309	<a href="#">🔗</a>	Final RES	3/14/2025	2/10/2025	25	0.00%		Task
▲	KR0305	<a href="#">🔗</a>	Final RES	3/14/2025	2/10/2025	25	0.00%		Task
▲	KR0163	<a href="#">🔗</a>	Final RES	3/14/2025	2/10/2025	25	0.00%		Task
▲	9P3814	<a href="#">🔗</a>	Final RES	3/18/2025	2/12/2025	25	0.00%		Task
▲	9P3855	<a href="#">🔗</a>	Final RES	3/18/2025	2/12/2025	25	0.00%		Task
▲	SE0152	<a href="#">🔗</a>	Final RES	3/18/2025	2/12/2025	25	0.00%		Task
▲	SE0072	<a href="#">🔗</a>	Final RES	3/18/2025	2/12/2025	25	0.00%		Task
▲	SE0145	<a href="#">🔗</a>	Final RES	3/18/2025	2/12/2025	25	0.00%		Task
▲	NW0029	<a href="#">🔗</a>	Final RES	3/19/2025	2/13/2025	25	0.00%		Task
▲	NW0089	<a href="#">🔗</a>	Final RES	3/24/2025	2/18/2025	25	0.00%		Task

Upcoming Finish

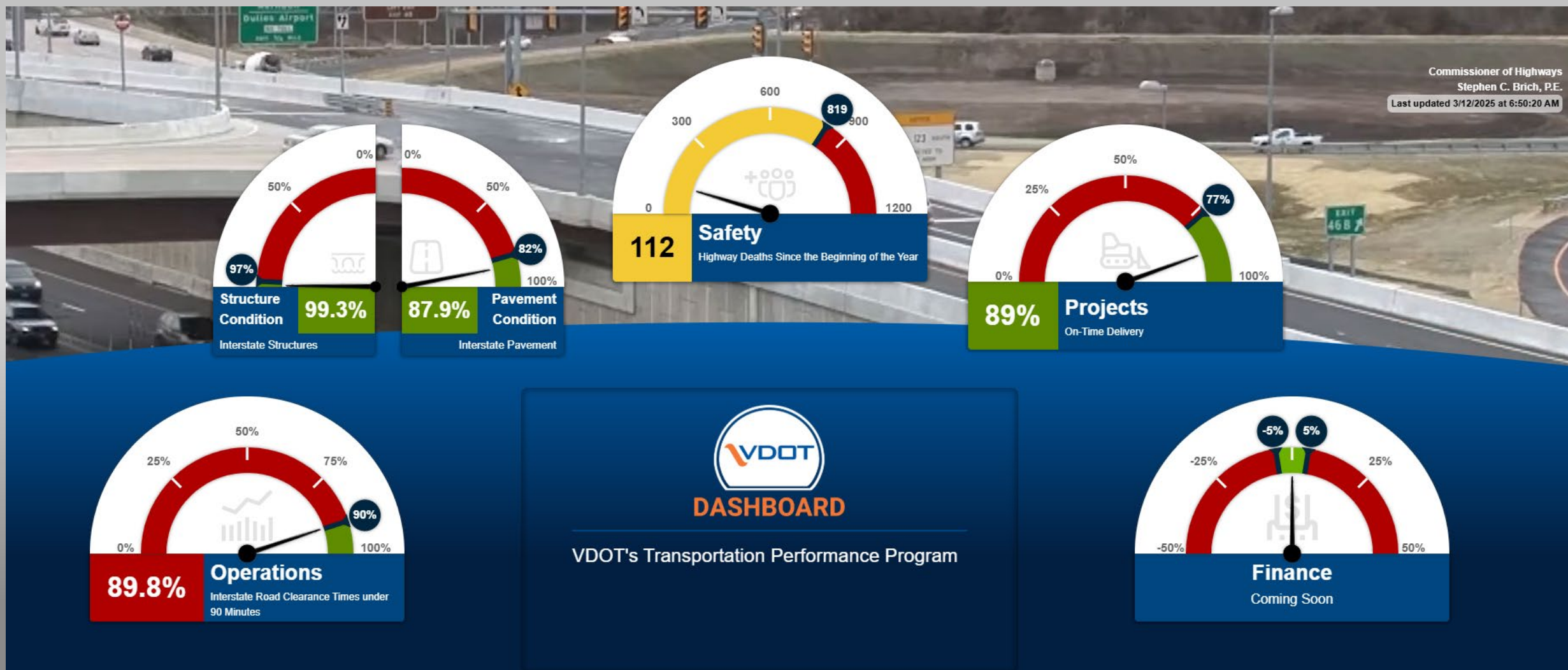
Next ▾ 30 Days ▾

📅 3/12/2025 - 4/10/2025

21  
Task Count

# Where We're Headed - Shoutout Virginia DOT

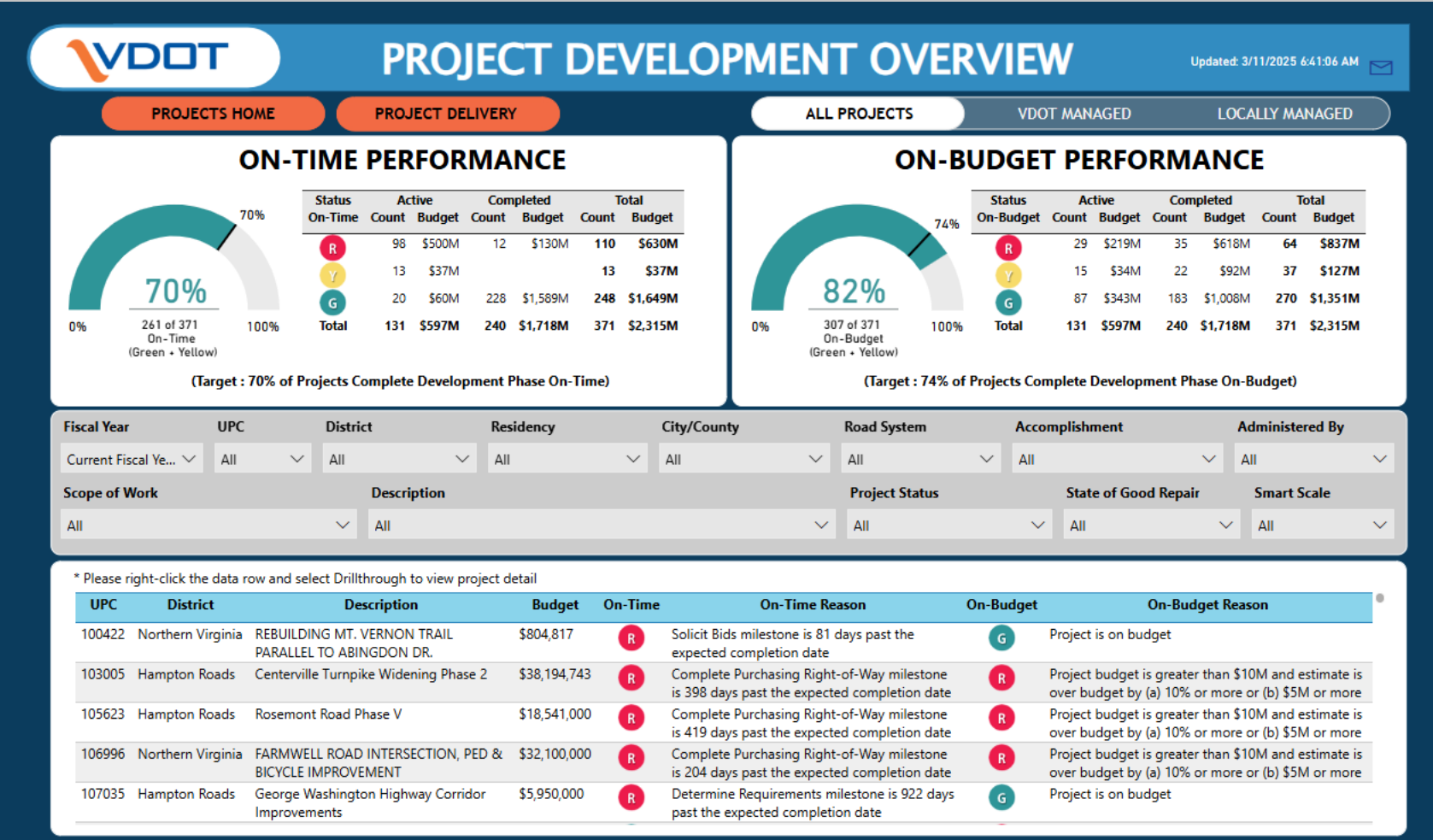
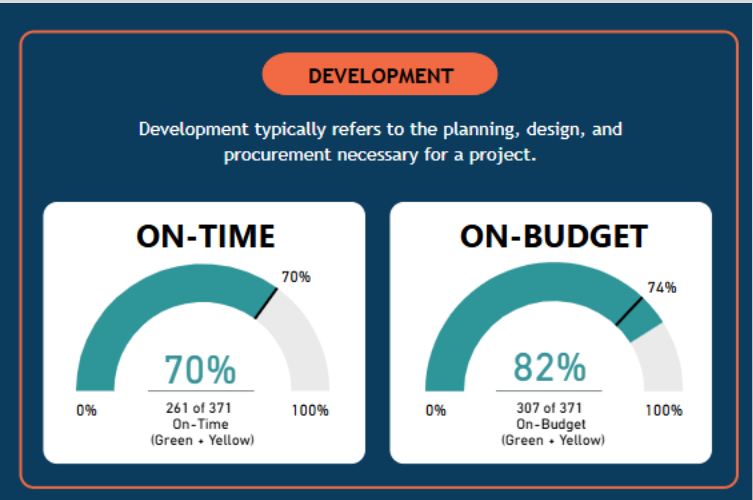
## Near-Real-Time Data Dashboards





# Where We're Headed - Shoutout Virginia DOT

## Near-Real-Time Data Dashboards





# Questions?

**Jeff Cremer**

**MoDOT – Professional Services Coordinator**

Jeffrey.Cremer@modot.mo.gov

(573) 751-3705

## **Project Scheduling Tool Team**

- Steve Atkinson
- Alvin Nieves-Rosario
- Jeff Bohler
- Keith Jennings