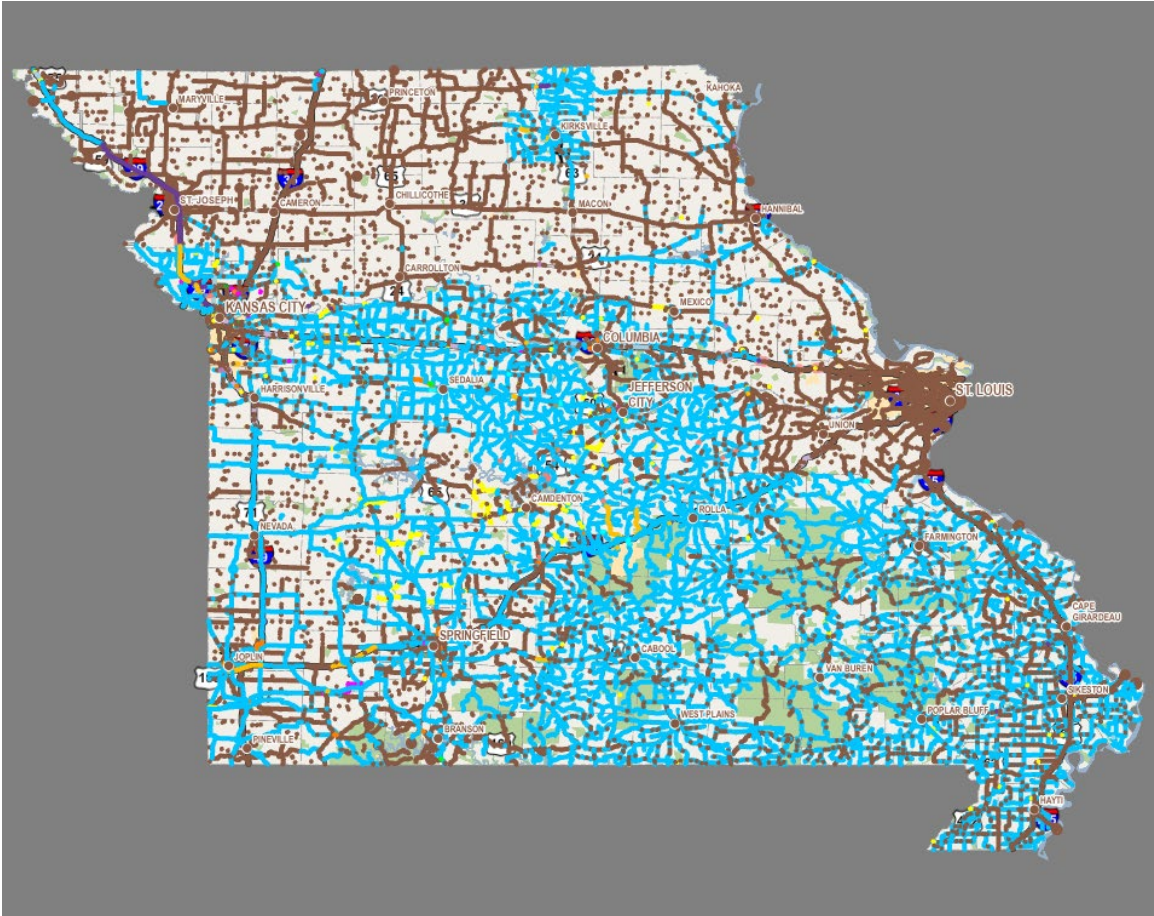


2025 TEAM Conference  
March 13, 2025

# MoDOT'S AS-BUILT PLANS APPLICATION

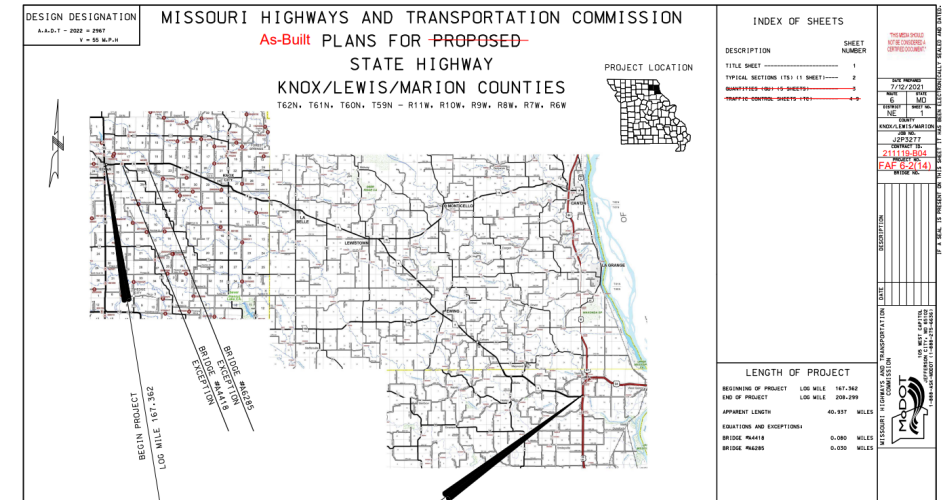
*Ashley Buechter and  
Brenda Harris*



# WHERE IT STARTED

As-built plans:

- Set of design plans representing what was built in the field



## Team Charter

Project: As-Built Plans Team

Team Sponsor: Eric Schroeter (Co-Sponsor – Kenny Voss)

### Current Situation:

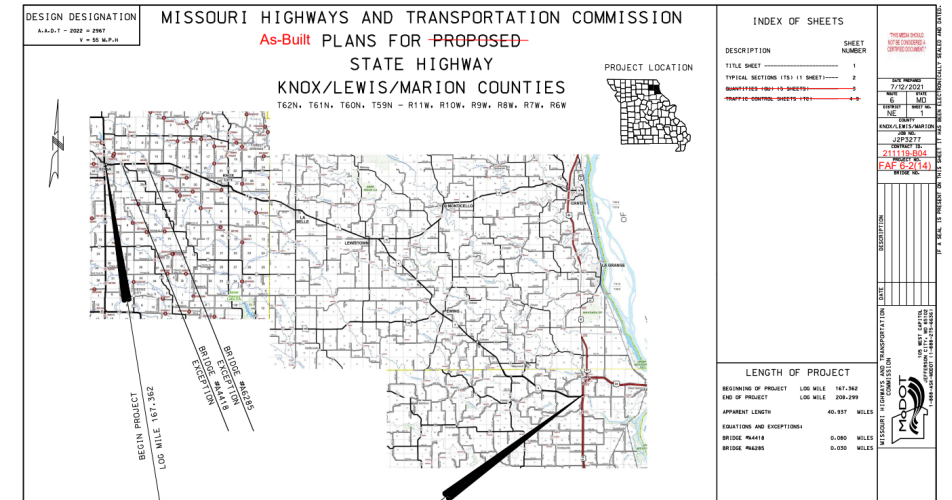
The Design Division stopped producing statewide “[Rag Maps](#)” for historical documentation of as-built plans in 2001. At the time of the change, the responsibility for storing as-built plans and maintaining rag maps was delegated to the Districts with limited direction resulting in storage of as-built plans in multiple locations and in various formats. The media for these plans has changed many times from microfilm to now PDF. Several Districts have already converted or are in the process of converting microfilm to PDF for electronic storage. This team will define a process for storing and sharing as-built plans.

A statewide SharePoint Projects Site team has been charged with creating a centralized location for all project related documents to be stored. This site is where as-built plans are expected to be stored.

Desired Outcomes	Undesired Outcomes
To be successful, this project will result in:	To be successful, this project will not result in:
<ul style="list-style-type: none"><li>• Define roles and responsibilities for storing</li></ul>	<ul style="list-style-type: none"><li>• No changes – everything stays the same.</li></ul>

# WHERE IT STARTED

- The problem:
  - 2001: Statewide “Rag Maps” stopped being produced
  - No centralized storage; duplication of effort and resources
  - External requests
- Create statewide team to develop the as-built plans maps



## Team Charter

Project: As-Built Plans Team

Team Sponsor: Eric Schroeter (Co-Sponsor – Kenny Voss)

**Current Situation:**

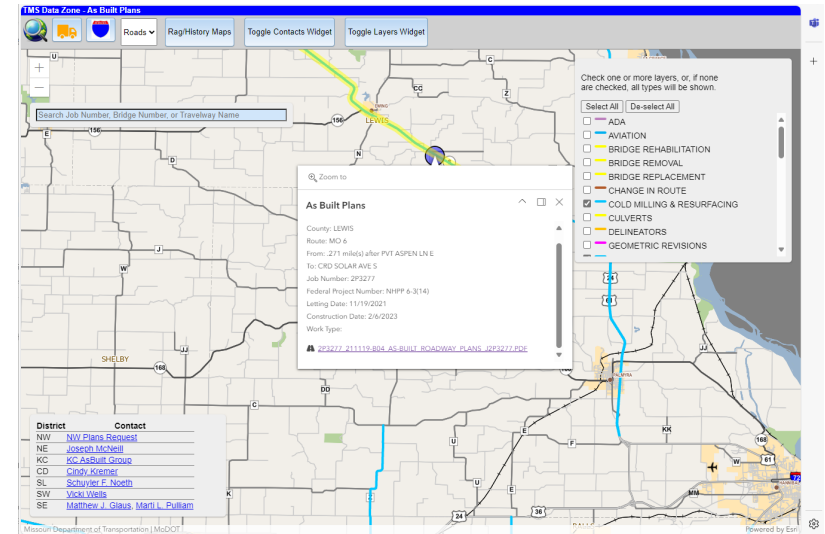
The Design Division stopped producing statewide “Rag Maps” for historical documentation of as-built plans in 2001. At the time of the change, the responsibility for storing as-built plans and maintaining rag maps was delegated to the Districts with limited direction resulting in storage of as-built plans in multiple locations and in various formats. The media for these plans has changed many times from microfilm to now PDF. Several Districts have already converted or are in the process of converting microfilm to PDF for electronic storage. This team will define a process for storing and sharing as-built plans.

A statewide SharePoint Projects Site team has been charged with creating a centralized location for all project related documents to be stored. This site is where as-built plans are expected to be stored.

Desired Outcomes	Undesired Outcomes
To be successful, this project will result in:	To be successful, this project will not result in:
<ul style="list-style-type: none"> <li>Define roles and responsibilities for storing</li> </ul>	<ul style="list-style-type: none"> <li>No changes – everything stays the same.</li> </ul>

# WHERE WE HAVE BEEN

- 2015: Formation of statewide team
- Development
- Populating the map
- How to access the map
  - Internal and external access
- Bridge plans
- Training



## Travelways Associates

### As Built Plans



Revised  
November 2023

Transportation Planning  
105 West Capital Avenue  
P.O. Box 270  
Jefferson City, MO 65102





# ACCESSING THE MAP

The screenshot shows the MoDOT website interface. At the top, there is a browser address bar with the URL <https://www.modot.org>. Below the address bar is a navigation bar with various links and a search bar. The main navigation menu is located below the search bar, with the 'Doing Business With MoDOT' link highlighted by a red circle. Under this menu, the 'As Built Plans' link is also highlighted by a red circle. The background of the website features a photograph of a highway with two yellow dump trucks and a white car driving on a snowy day.

888 - ASK MODOT (275-6636) EMAIL / TEXT UPDATES CONTACT US TRANSLATE

MoDOT Missouri Department of Transportation

Local Travelers Road Work Programs Motor Carriers News About Careers **Doing Business With MoDOT**

**As Built Plans**  
Become a MoDOT Vendor  
Bidding Opportunities  
Bridge Standard Drawings  
Consultant Resources

Contractor Resources  
Design-Build Information  
Engineering Policy Guide  
File a Claim  
Local Public Agency (LPA)

Maps  
MRCC Directory  
MoDOT Realty for Sale  
Permits  
Online Payments

Online Plans Room  
Outdoor Advertising  
Small Business Regulatory  
Fairness Board  
Standards & Specifications

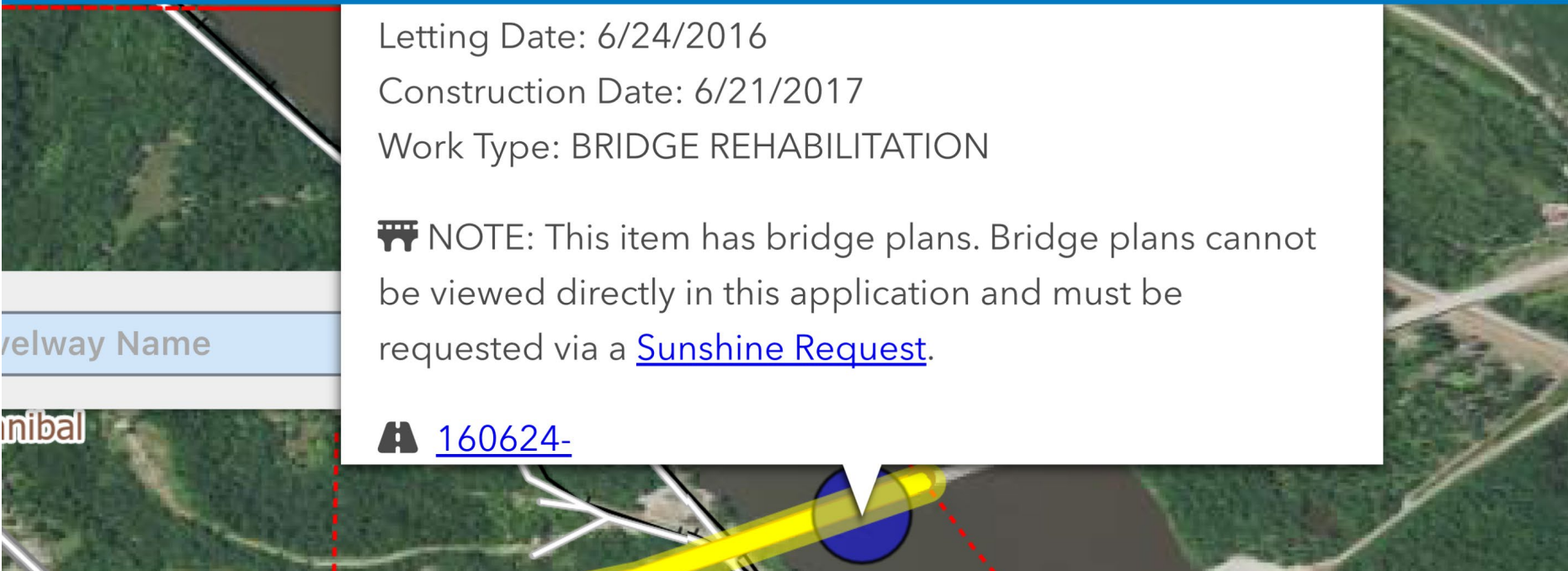
Surplus Equipment and  
Auctions  
TSMO Strategies  
Utility Resources  
Value Engineering

# BRIDGE PLANS


Tag/History Maps


Toggle Contacts Widget

Toggle Layers Widget






Letting Date: 6/24/2016  
Construction Date: 6/21/2017  
Work Type: BRIDGE REHABILITATION

 NOTE: This item has bridge plans. Bridge plans cannot be viewed directly in this application and must be requested via a [Sunshine Request](#).

 [160624-](#)

TMS Data Zone - As Built Plans



Roads ▾

Rag/History Maps

Toggle Contacts Widget

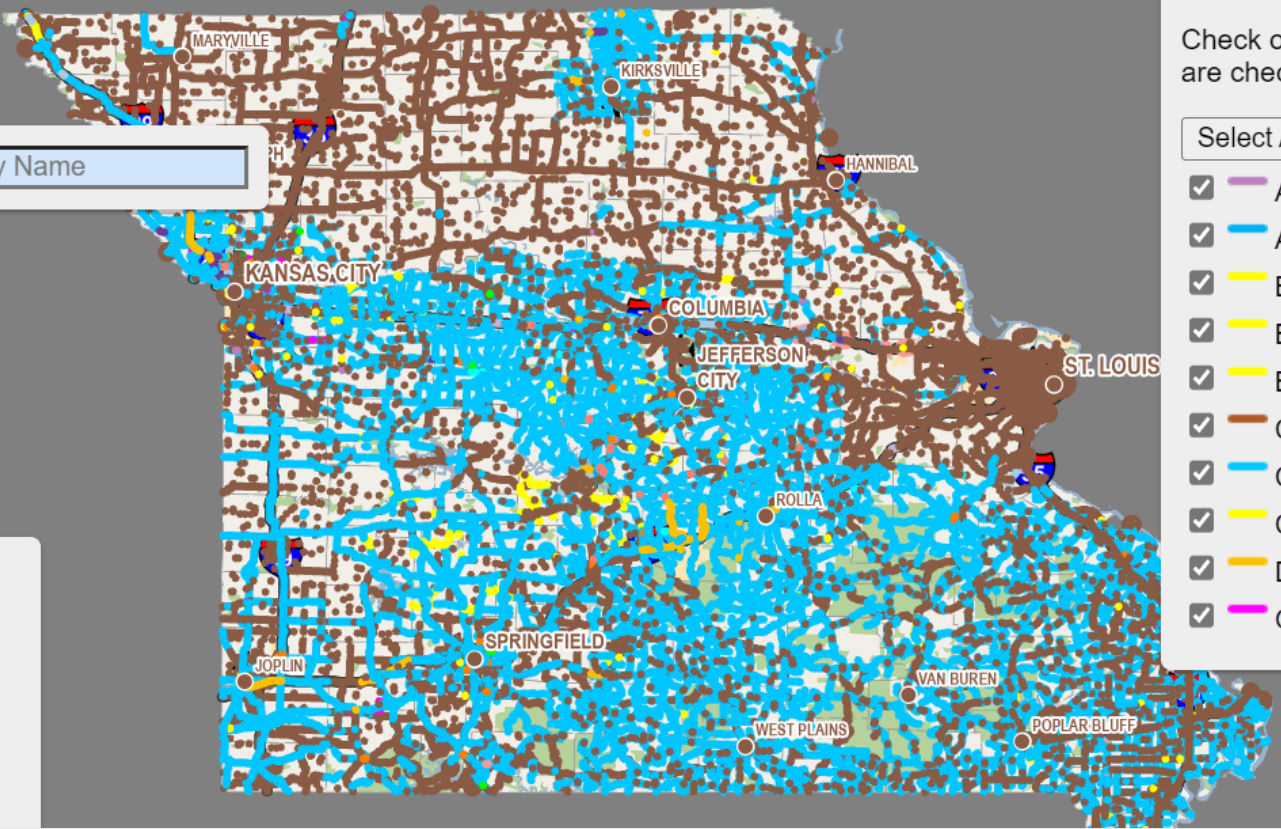
Toggle Layers Widget

+

-

Search Job Number, Bridge Number, or Travelway Name

District	Contact
NW	<a href="#">NW Plans Request</a>
NE	<a href="#">Joseph McNeill</a>
KC	<a href="#">KC AsBuilt Group</a>
CD	<a href="#">Cindy Kremer</a>
SL	<a href="#">Schuyler F. Noeth</a>
SW	<a href="#">Vicki Wells</a>



Check one or more layers, or, if none are checked, all types will be shown.

Select All De-select All

☒

ADA

☒

AVIATION☒☒☒☒☒☒☒☒

# ACCESSING THE MAP



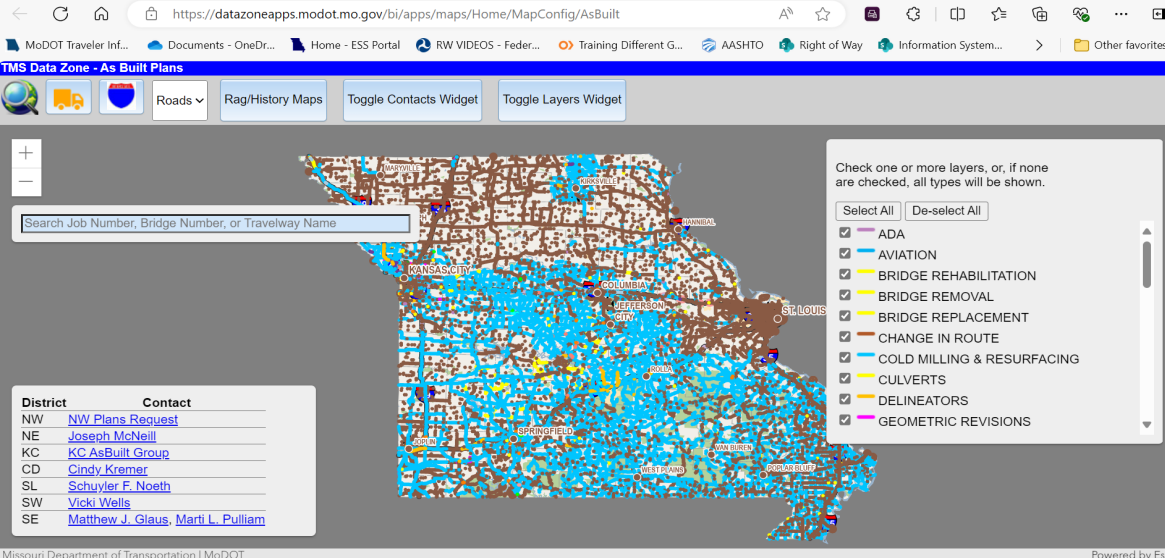
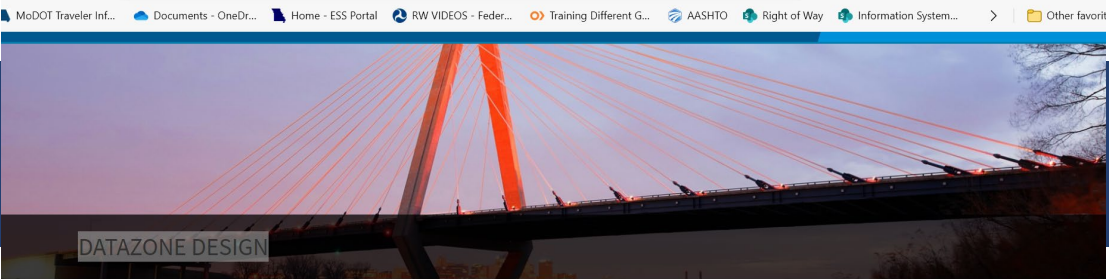
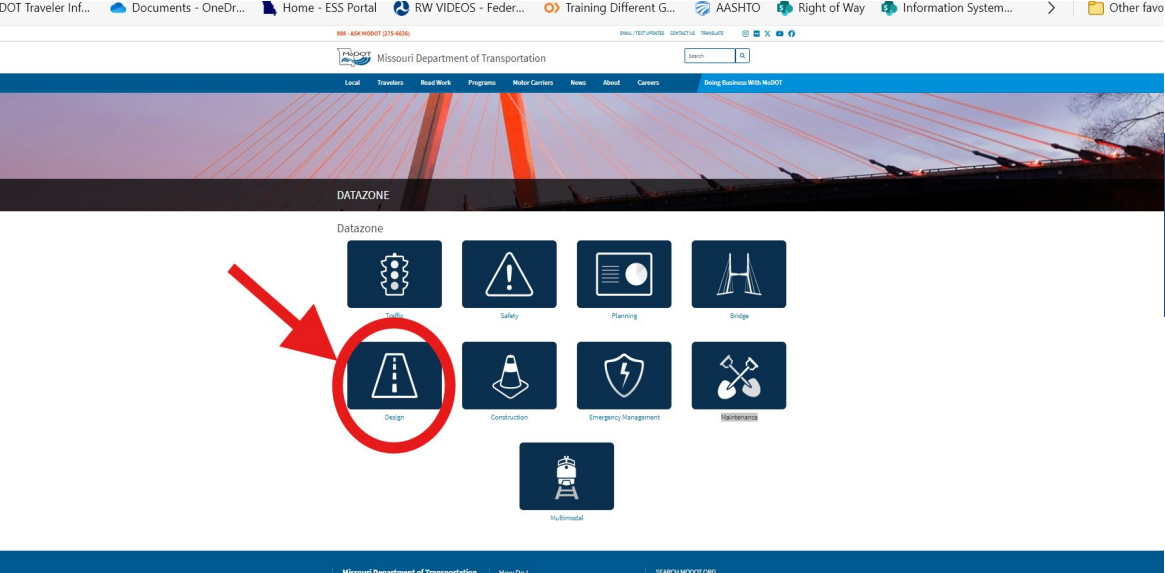
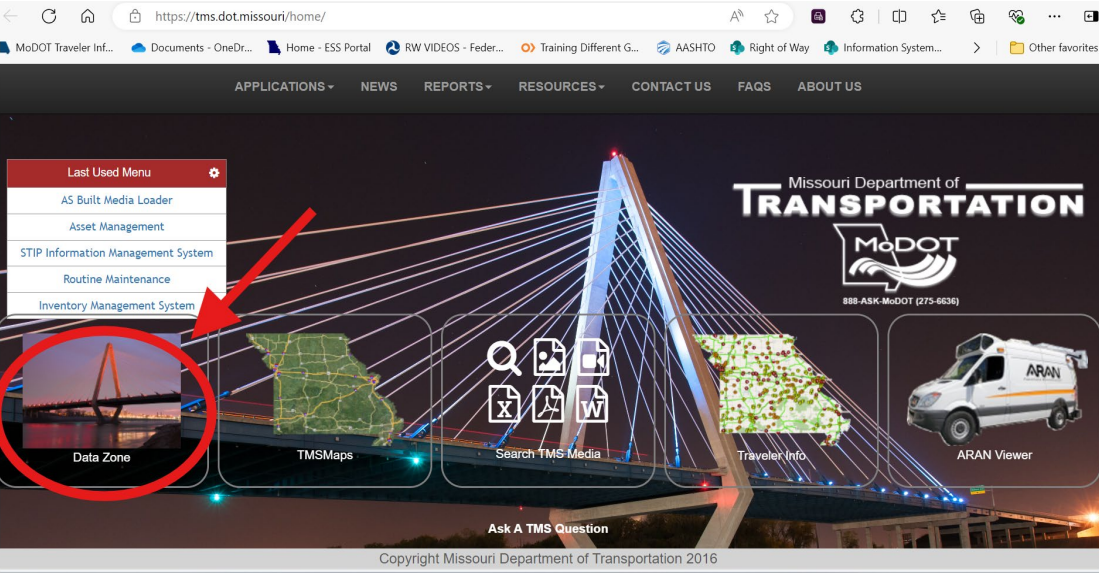


# ACCESSING THE PLANS PDF

# ACCESSING THE PLANS PDF



# INTERNAL MoDOT – ACCESSING TMS



# TRAINING

## *Travelways Associatives*

### *As Built Plans*



Revised  
November 2023

Transportation Planning  
105 West Capitol Avenue  
P.O. Box 270  
Jefferson City, MO 65102



### Central Office Design

Brenda Harris	(573) 751-7458	<a href="mailto:brenda.harris@modot.mo.gov">brenda.harris@modot.mo.gov</a>
Ashley Buechter	(573) 526-6997	<a href="mailto:ashley.buechter@modot.mo.gov">ashley.buechter@modot.mo.gov</a>
Deann Wieberg	(573) 522-8464	<a href="mailto:deann.wieberg@modot.mo.gov">deann.wieberg@modot.mo.gov</a>

### Northwest

Jeff Burns	(816) 387-2410	<a href="mailto:jeffrey.burns@modot.mo.gov">jeffrey.burns@modot.mo.gov</a>
Russ O'Daniell	(816) 387-2409	<a href="mailto:Russel.O'Daniell@modot.mo.gov">Russel.O'Daniell@modot.mo.gov</a>

### Northeast

Joe McNeill	(573) 248-2484	<a href="mailto:joseph.mcneill@modot.mo.gov">joseph.mcneill@modot.mo.gov</a>
-------------	----------------	--

### Kansas City

Regina Shipley	(816) 607-2223	<a href="mailto:Regina.Shipley@modot.mo.gov">Regina.Shipley@modot.mo.gov</a>
----------------	----------------	--

### St. Louis

Schuyler Noeth	(314) 453-1821	<a href="mailto:schuyler.noeth@modot.mo.gov">schuyler.noeth@modot.mo.gov</a>
----------------	----------------	--

### Central

Cindy Kremer	(573) 522-5266	<a href="mailto:Cindy.Kremer@modot.mo.gov">Cindy.Kremer@modot.mo.gov</a>
--------------	----------------	--

### Southwest

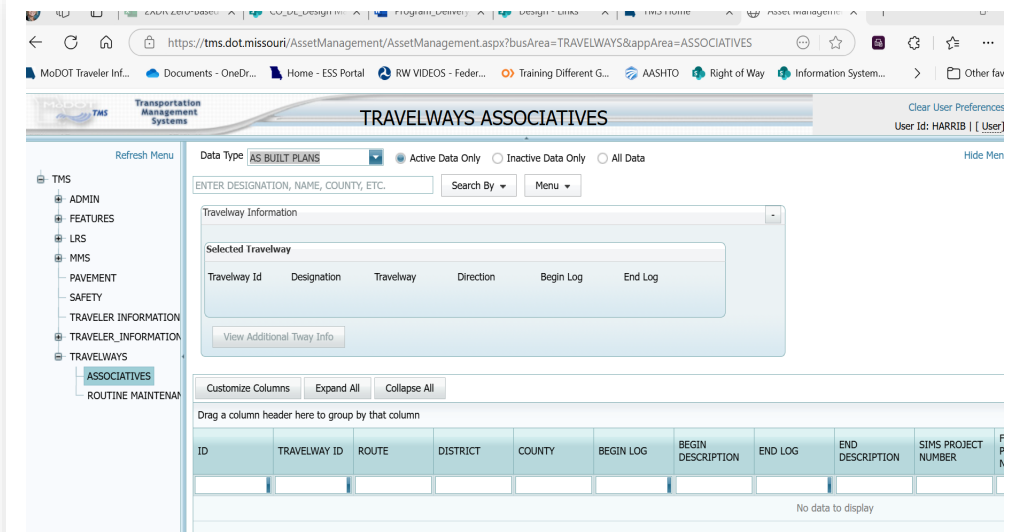
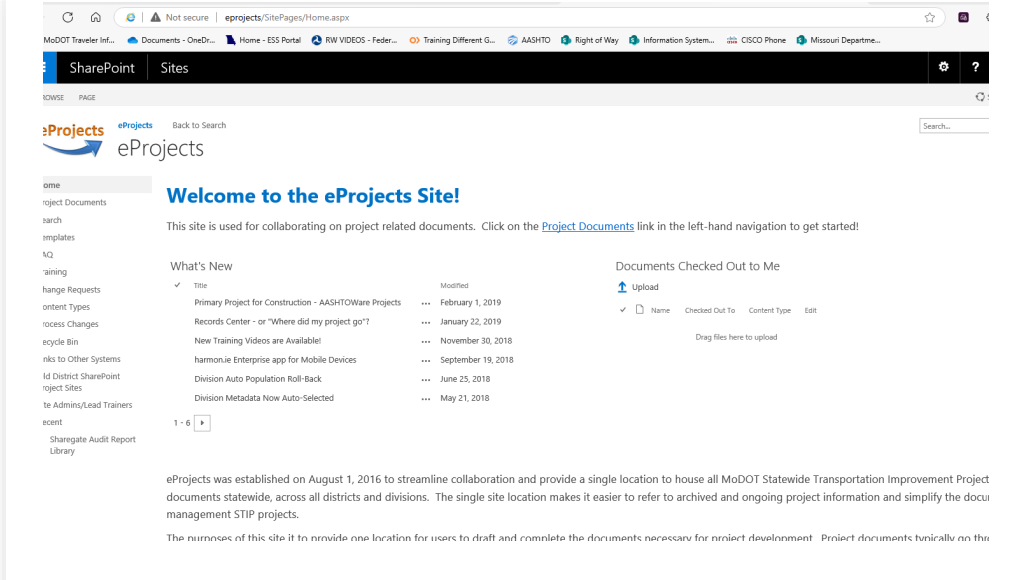
Vicki Wells	(417) 895-7663	<a href="mailto:Vicki.Wells@modot.mo.gov">Vicki.Wells@modot.mo.gov</a>
-------------	----------------	--

### Southeast

Matt Glaus	(573) 472-6599	<a href="mailto:matthew.glaus@modot.mo.gov">matthew.glaus@modot.mo.gov</a>
Marti Pulliam		<a href="mailto:Marti.Pulliam@modot.mo.gov">Marti.Pulliam@modot.mo.gov</a>
Anita Clark	(573) 472-5896	<a href="mailto:Anita.Clark@modot.mo.gov">Anita.Clark@modot.mo.gov</a>
Sheryl Wunderlich	(573) 472-5289	<a href="mailto:sheryl.wunderlich@modot.mo.gov">sheryl.wunderlich@modot.mo.gov</a>

# WHERE WE ARE GOING

- Continue to populate:
  - eProjects
  - Manual entry
  - Batch projects
- Future application plans:
  - Periodic Team meeting
  - Information gathering
  - New systems across the nation



# **THE AS-BUILT SYSTEM (LIVE DEMO)**



# THANK YOU!

