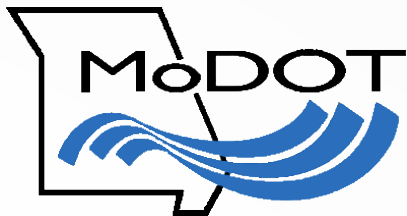




# JEFFERSON AVENUE | 22<sup>ND</sup> STREET A NEW GATEWAY

FEBRUARY 2024



# TODAY'S TOPICS

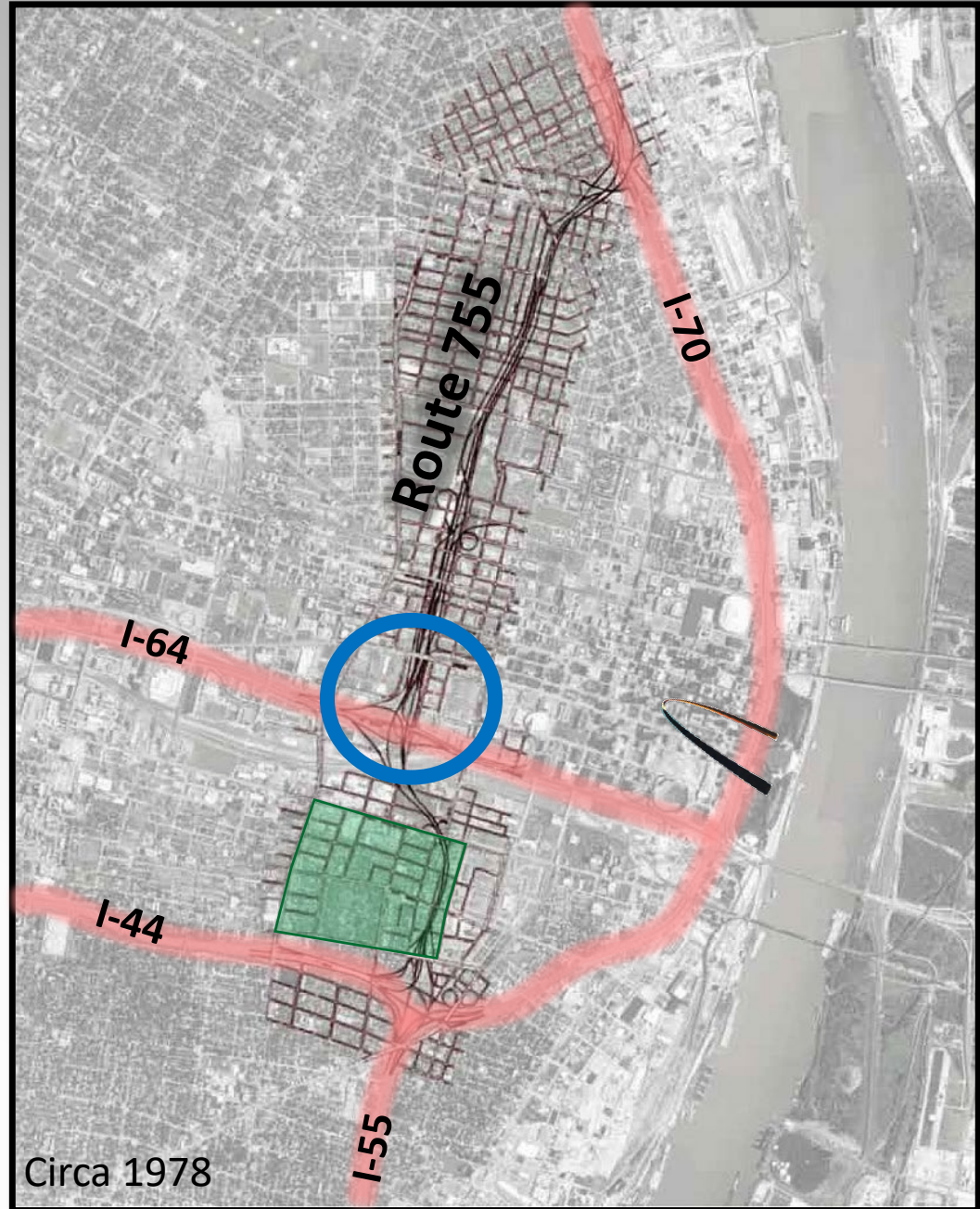
- **History Lesson**
- **Project Overview**
- **City Highlights - Bike/Ped Components**
- **City Before and After Photos**



# WHERE WE STARTED

## ROUTE 755

- 1940's era of Expressways/Arterials & North-South Distributor proposed
- 1960's – expressways near completion (now I-70, I-55, I-64 & I-44)
- 1971 – growing opposition
  - Coalition to stop North South Dist.
  - Lafayette Park – Historical designation
- 1972 – designated Route 755
- Mid 1980's – project removed





# MILL CREEK VALLEY

## ROUTE 755

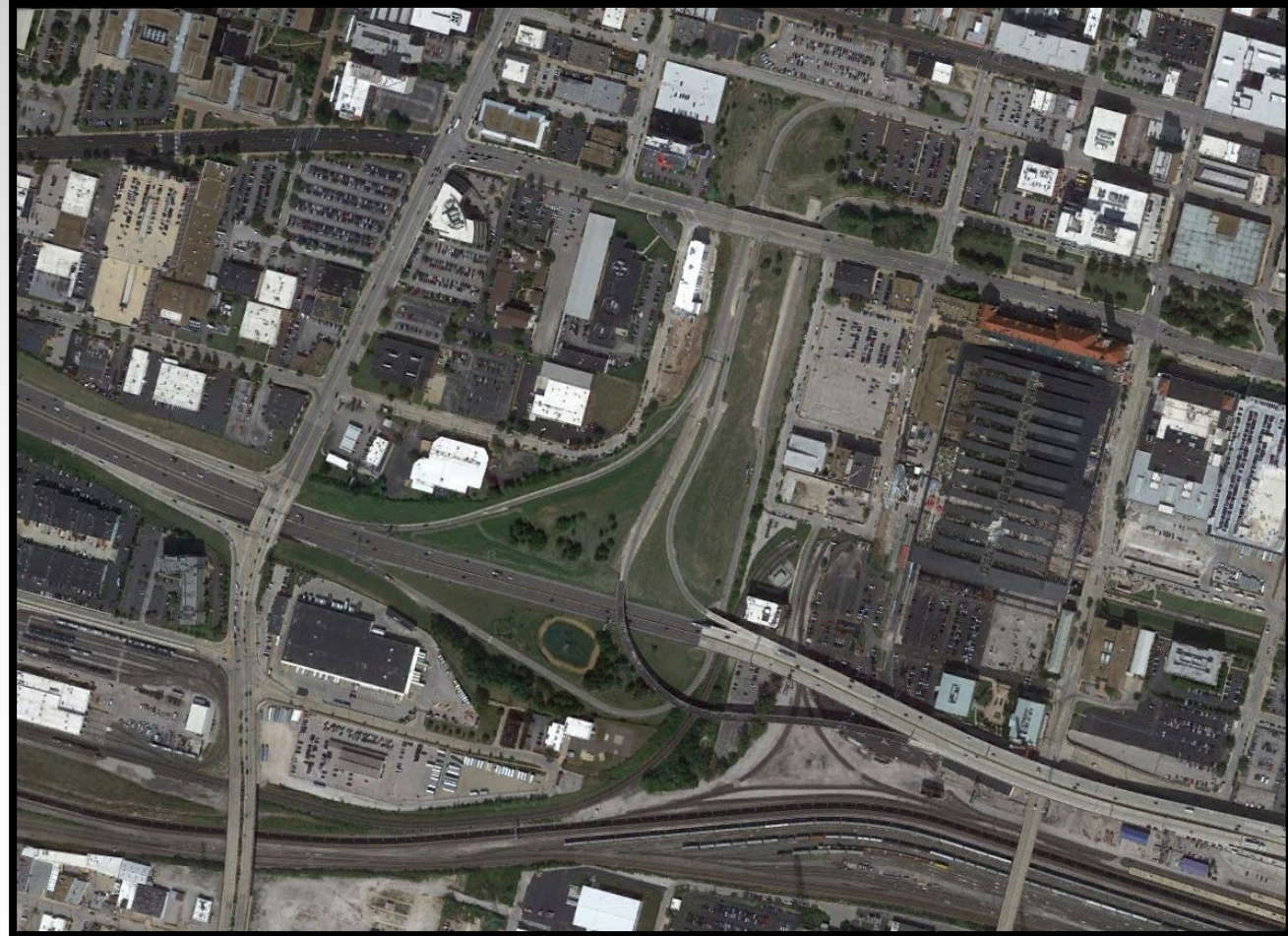
- Neighborhoods categorized as blighted and obsolete
- 1950's Urban renewal projects
- Displaced 20,000 predominately Black residents
- 93% of the neighborhood demolished
- 330 acres between 20th St, Grand Ave, Olive St and Scott Ave





# WHAT THEN?

- 50 years of over built and aging pavement and bridges
- Market St bridge and Pine St ramp structure rated in poor condition
- Need for more intuitive access points
- 26 acres State maintained right of way



# PROJECT CONNECT

- National Geospatial Agency relocation (2016)
- City of St. Louis initiative
- Align people, plans and projects
- Identified priority infrastructure investments



## ACTION PLAN

A City of St. Louis  
Initiative



Issued: 4/3/2017





# PROJECT CONNECT

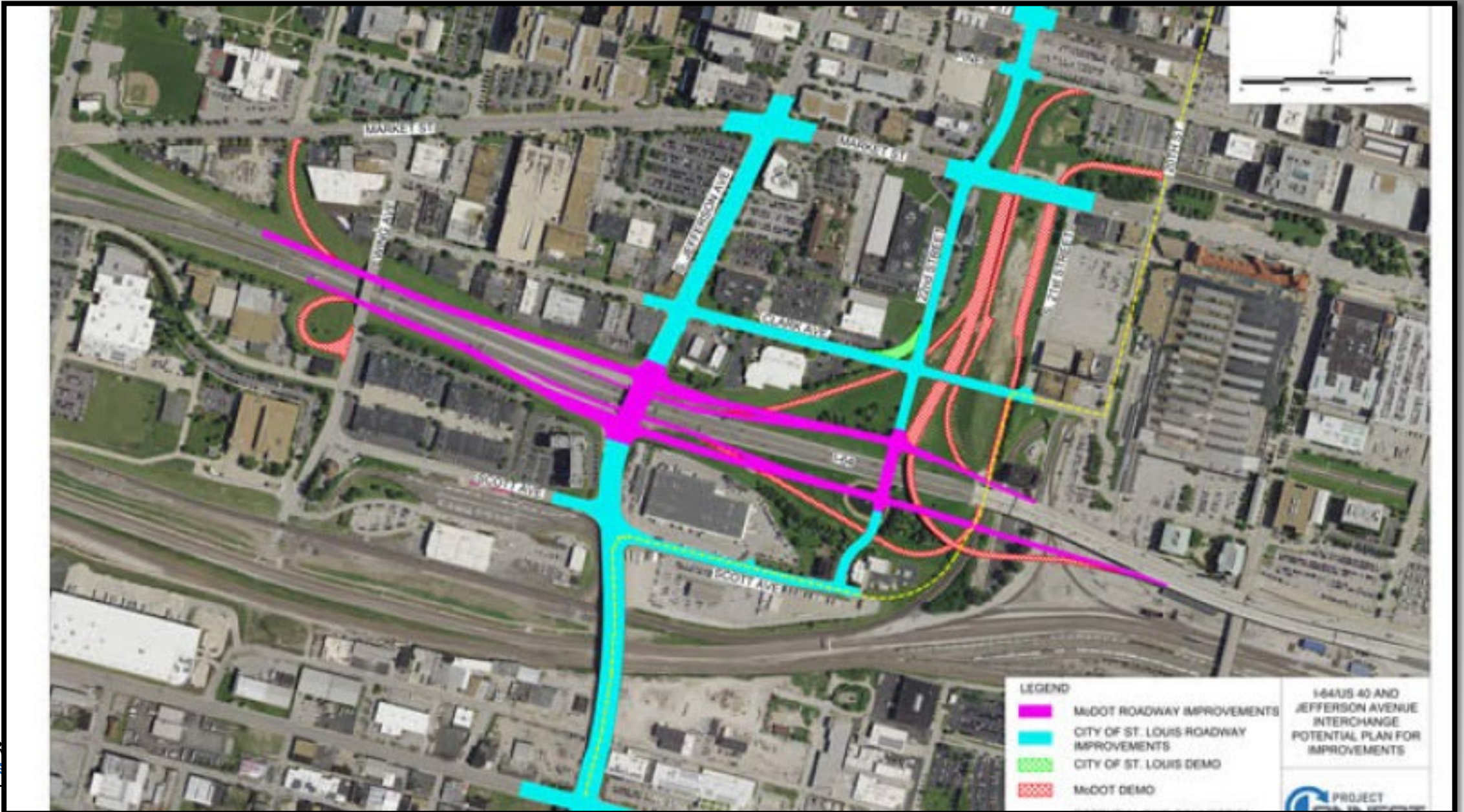
## ADJOINING PROJECTS

- **NGA West in North St. Louis**
- **Jefferson/Parnell (SLDC)**
- **20<sup>th</sup> Street Bike/Ped Improvements (SLDC)**
- **I-64/Jefferson Ave. Interchange (MoDOT)**
- **Jefferson|22<sup>nd</sup> Corridor Improvements (BPS)**





# PROJECT AREA 2016

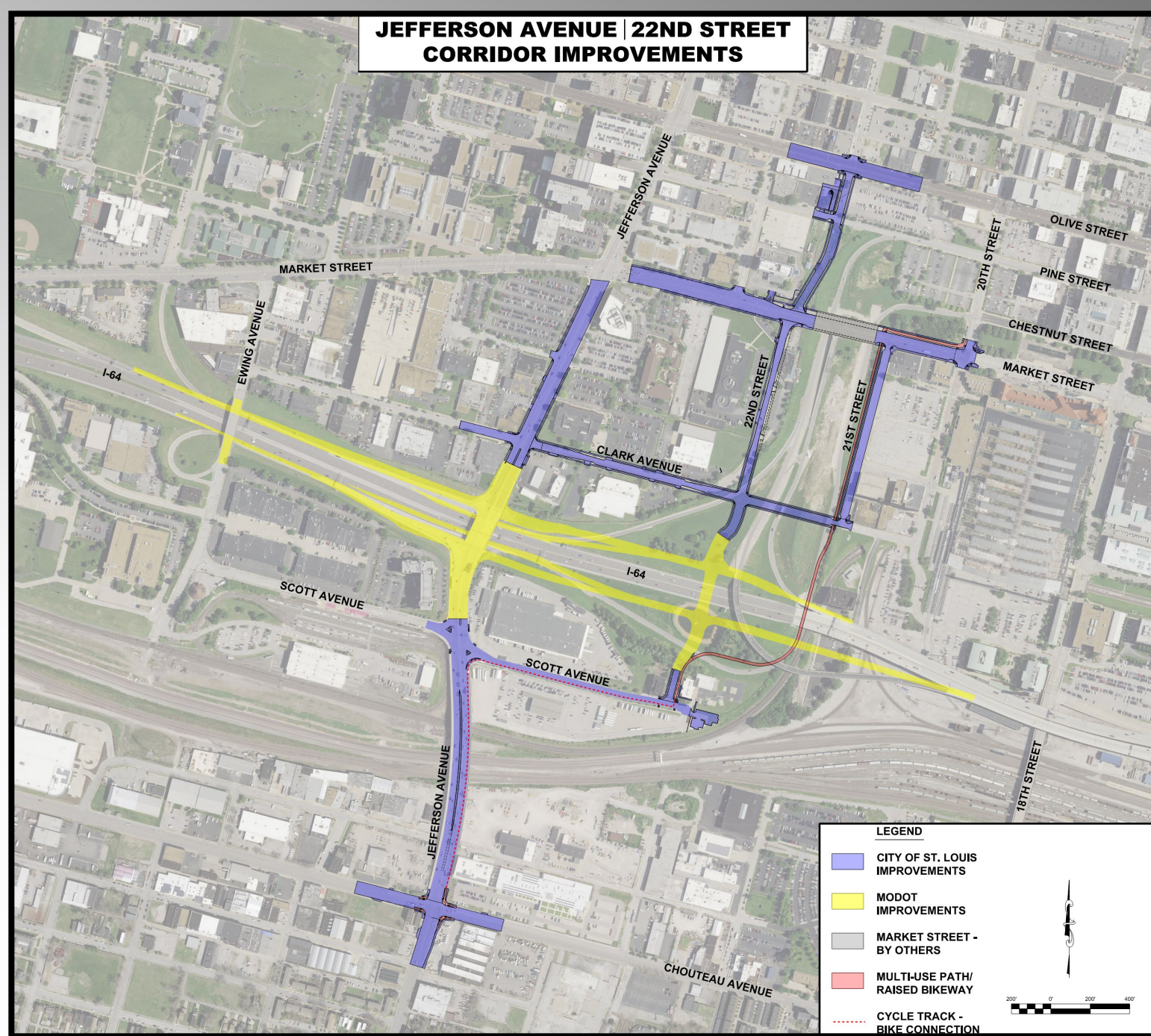




# PROJECT OVERVIEW

## AJR & AGREEMENTS

- Access Justification Report
  - Began in 2016
  - Approved June 2019
  - Two Addendums
- MoDOT Cost Share 2017
- STP & CMAQ Funds were awarded in 2018

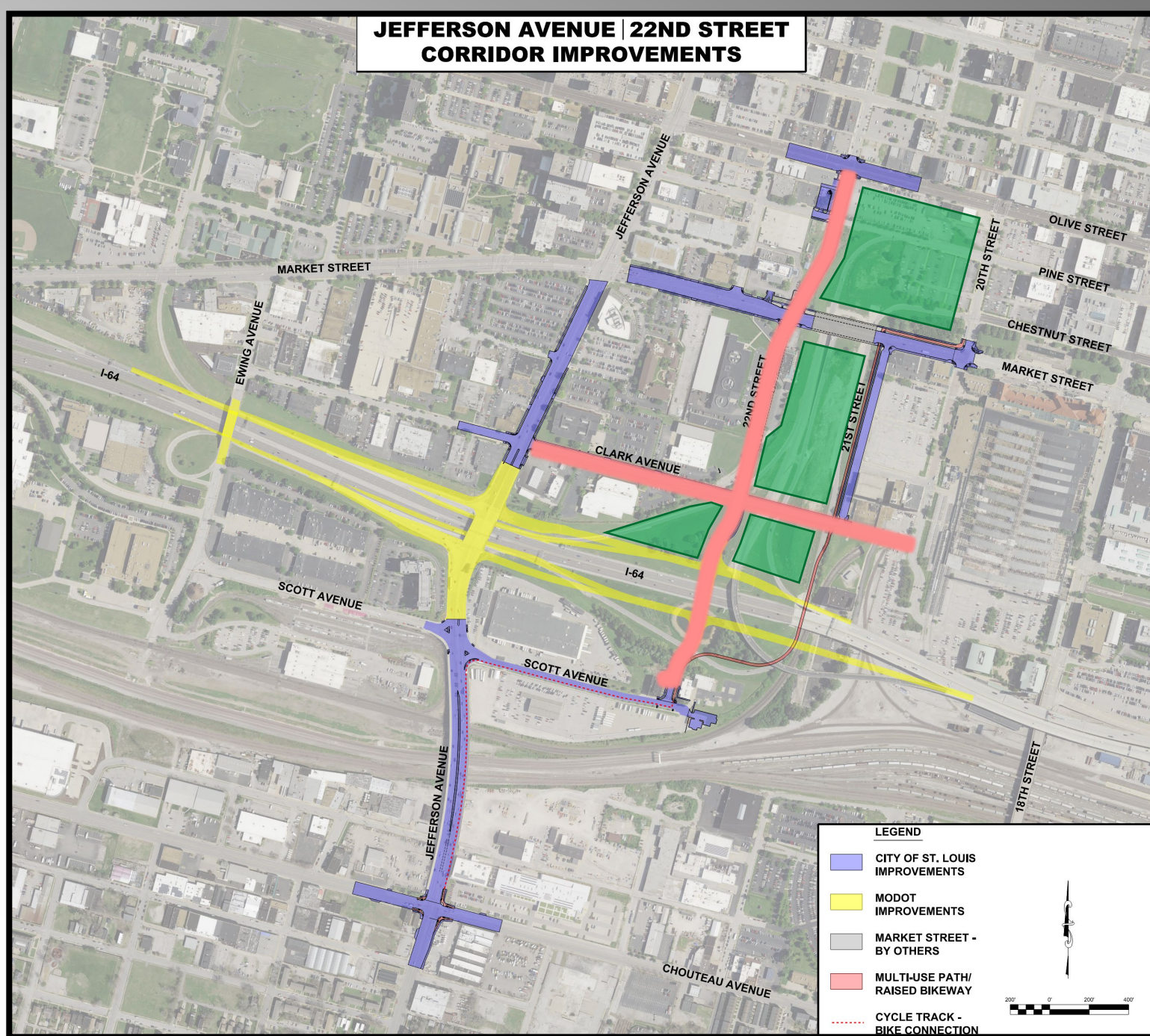




# PROJECT OVERVIEW

## LOCATION

- MoDOT Interchange
- Jefferson Avenue
- 22<sup>nd</sup> Street
- 21<sup>st</sup> Street
- Olive Street
- Market Street
- Clark Street
- Scott Avenue
- Chouteau Avenue
- Bikeway Connection
- **Parcels for Development**





# PROJECT OVERVIEW

## LOCATION

- **MLS Project**
  - Stadium
  - 2 Practice Pitches
  - Team Store
  - Medical/Training Facility
  - 3<sup>rd</sup> Pitch and Parking
- **GRG Brickline**



Great Rivers Greenway



HORNER  
SHIFRIN

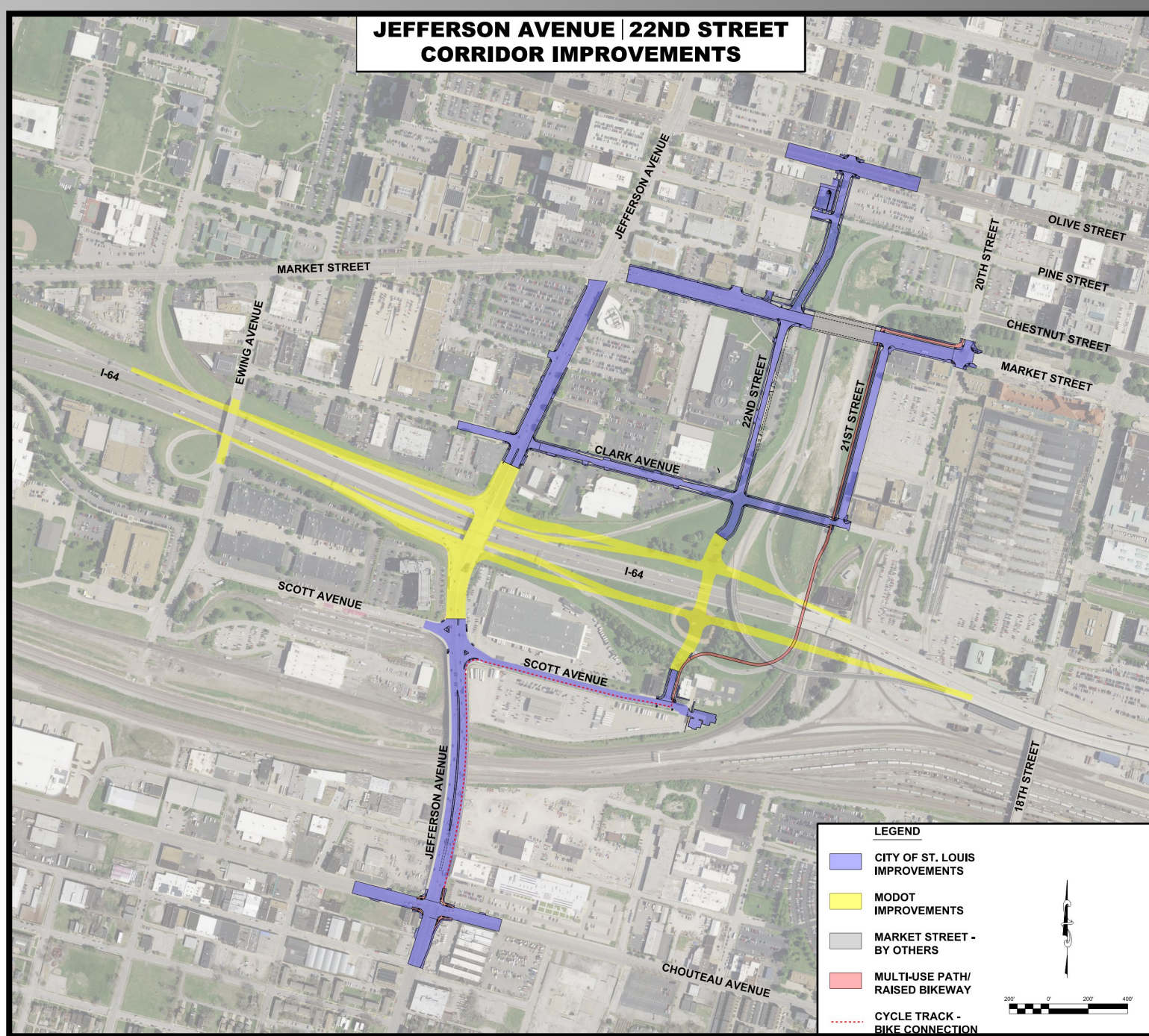




# PROJECT OVERVIEW

## JEFFERSON | 22ND

- More intuitive and direct access to/from I-64
- Multimodal connectivity
- Opened up 22 acres for redevelopment
- Spurs opportunity for Major League Soccer
- Project bid for \$11.6M in Jan. 2022 with anticipated completion early 2024

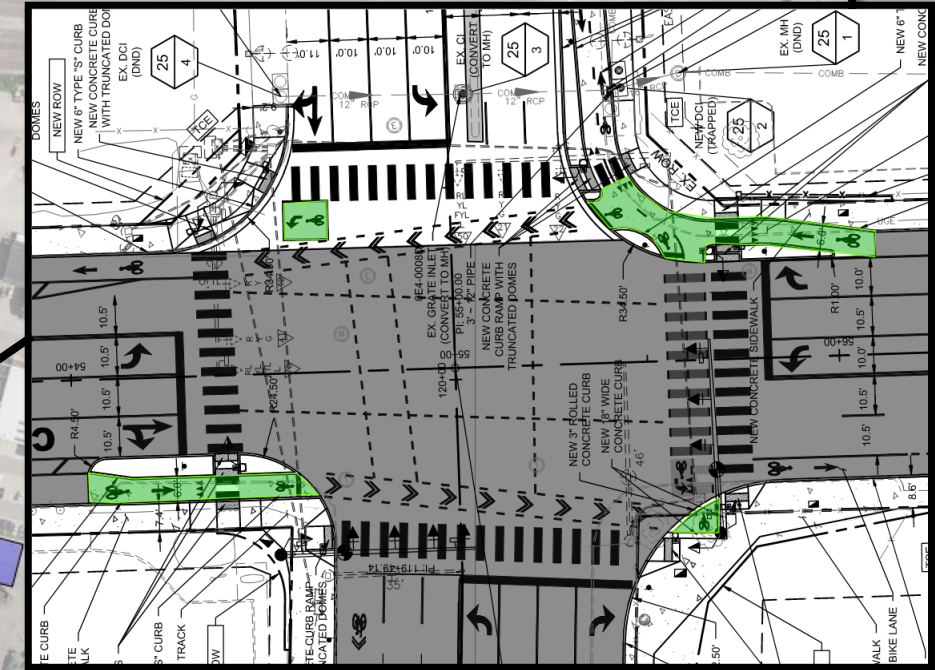
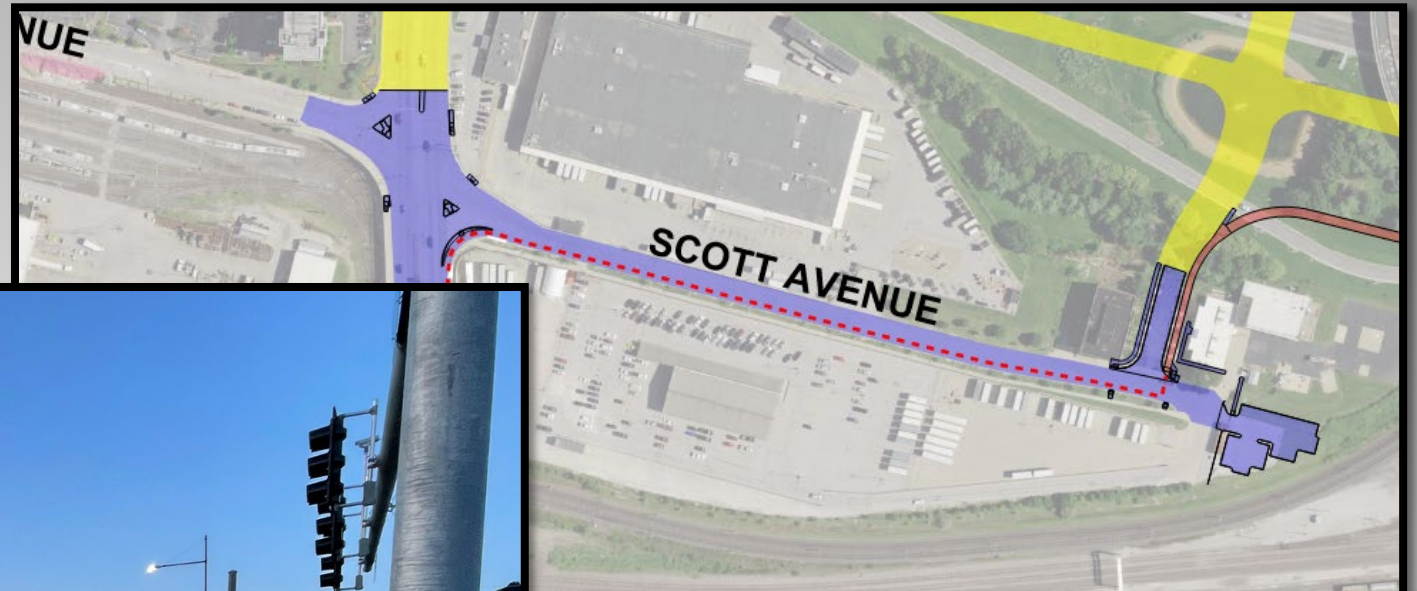




# SOUTH OF I-64

## JEFFERSON AVENUE

- E
- P
- E

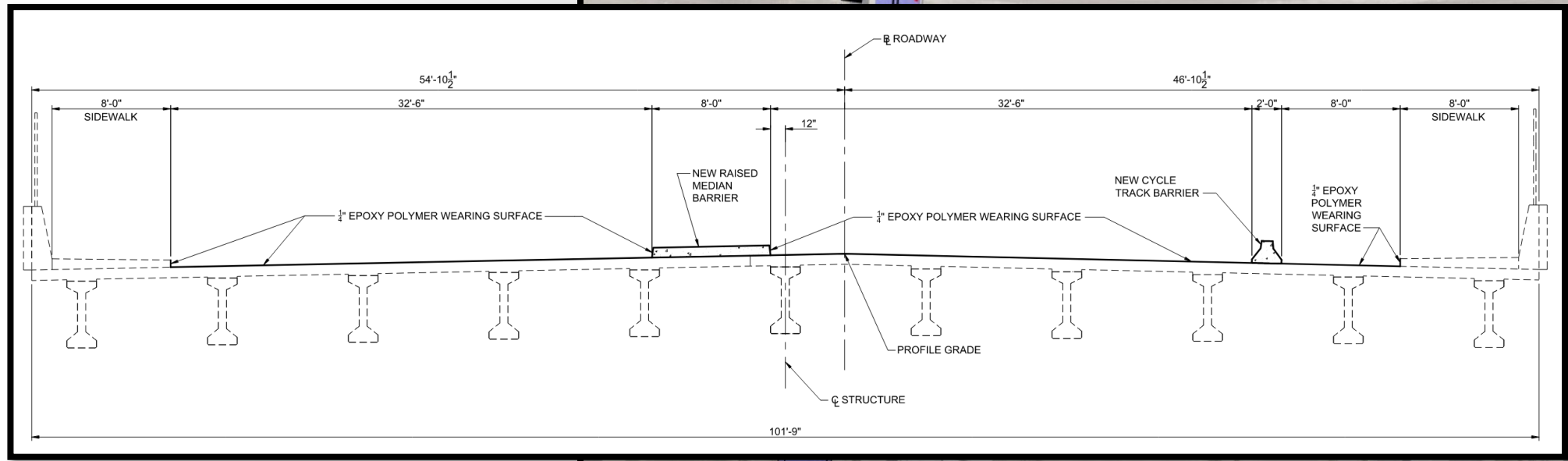
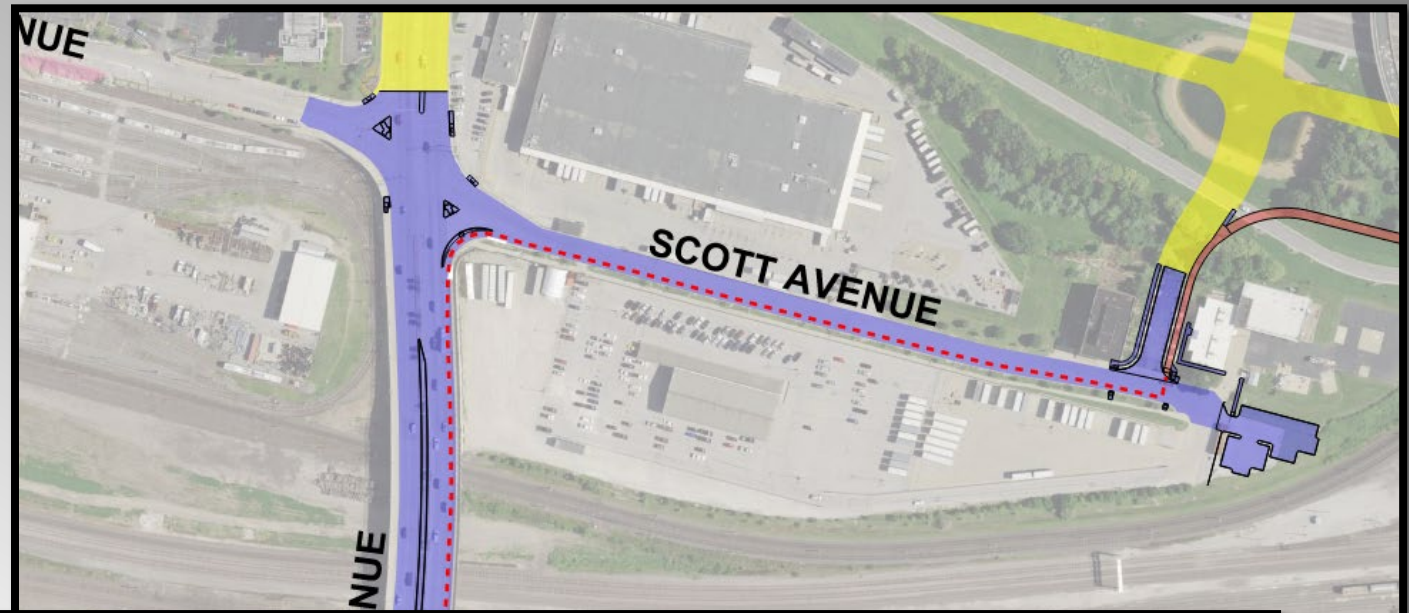




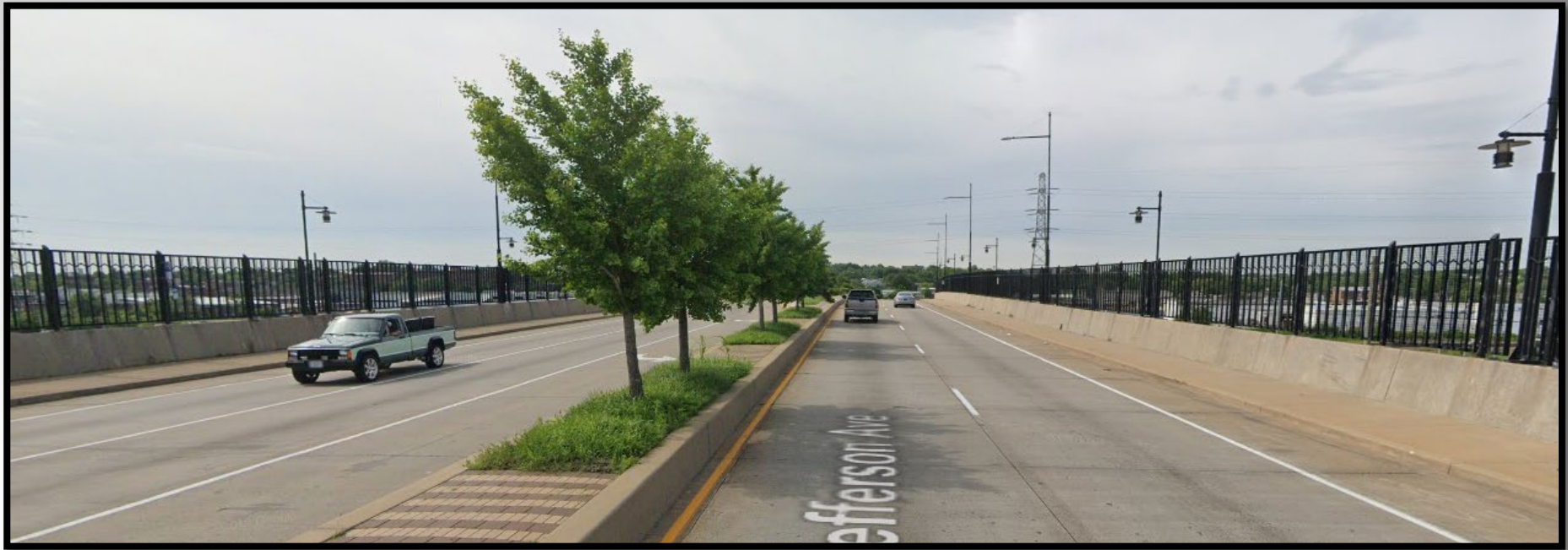
# SOUTH OF I-64

## JEFFERSON AVENUE

- Cycle Track
- Median Impacts



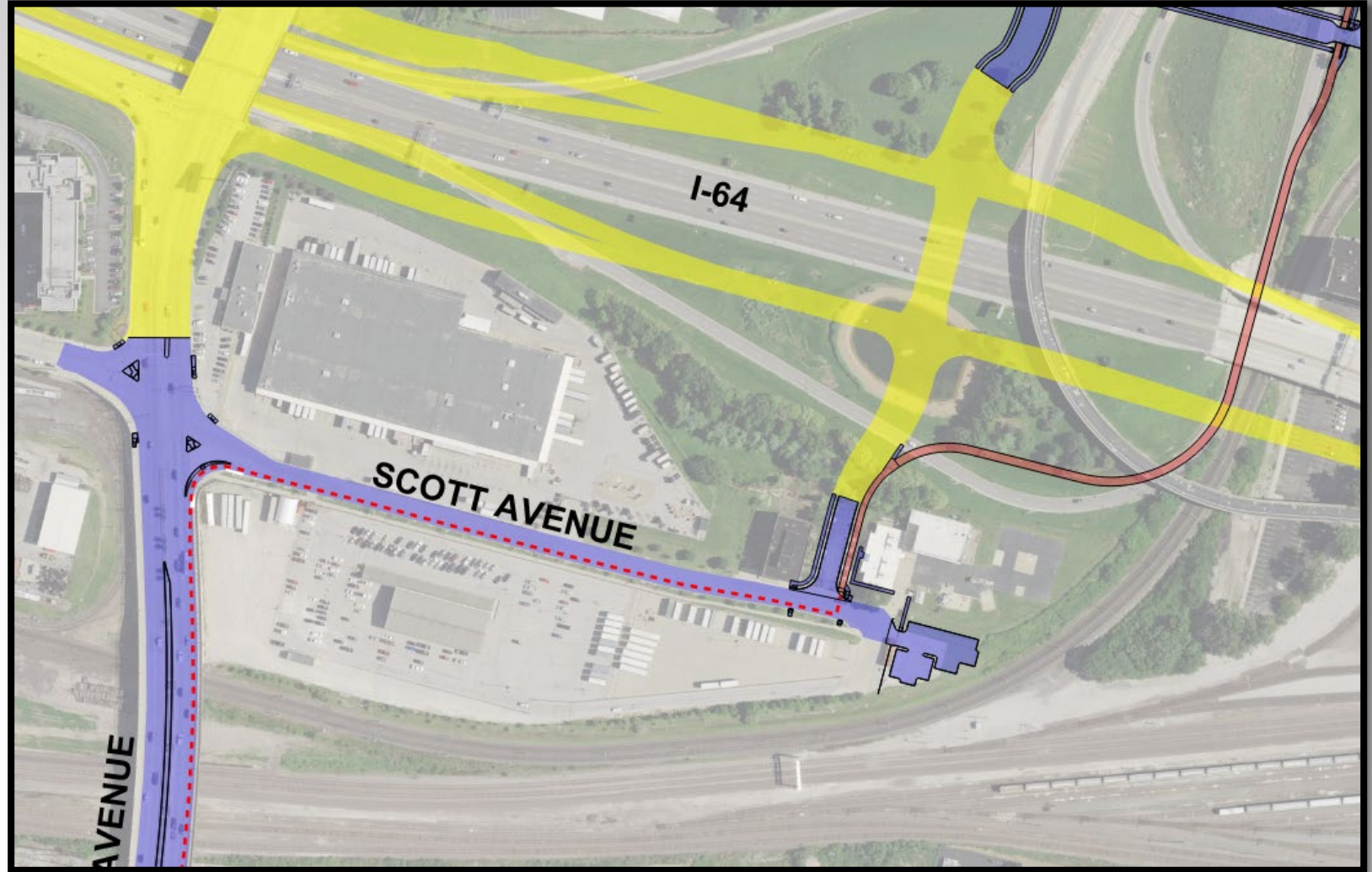




# SOUTH OF I-64

## SCOTT & 22<sup>ND</sup>

- Cycle Track to Shared Use Path
- 22<sup>nd</sup> Connection to Scott Ave.

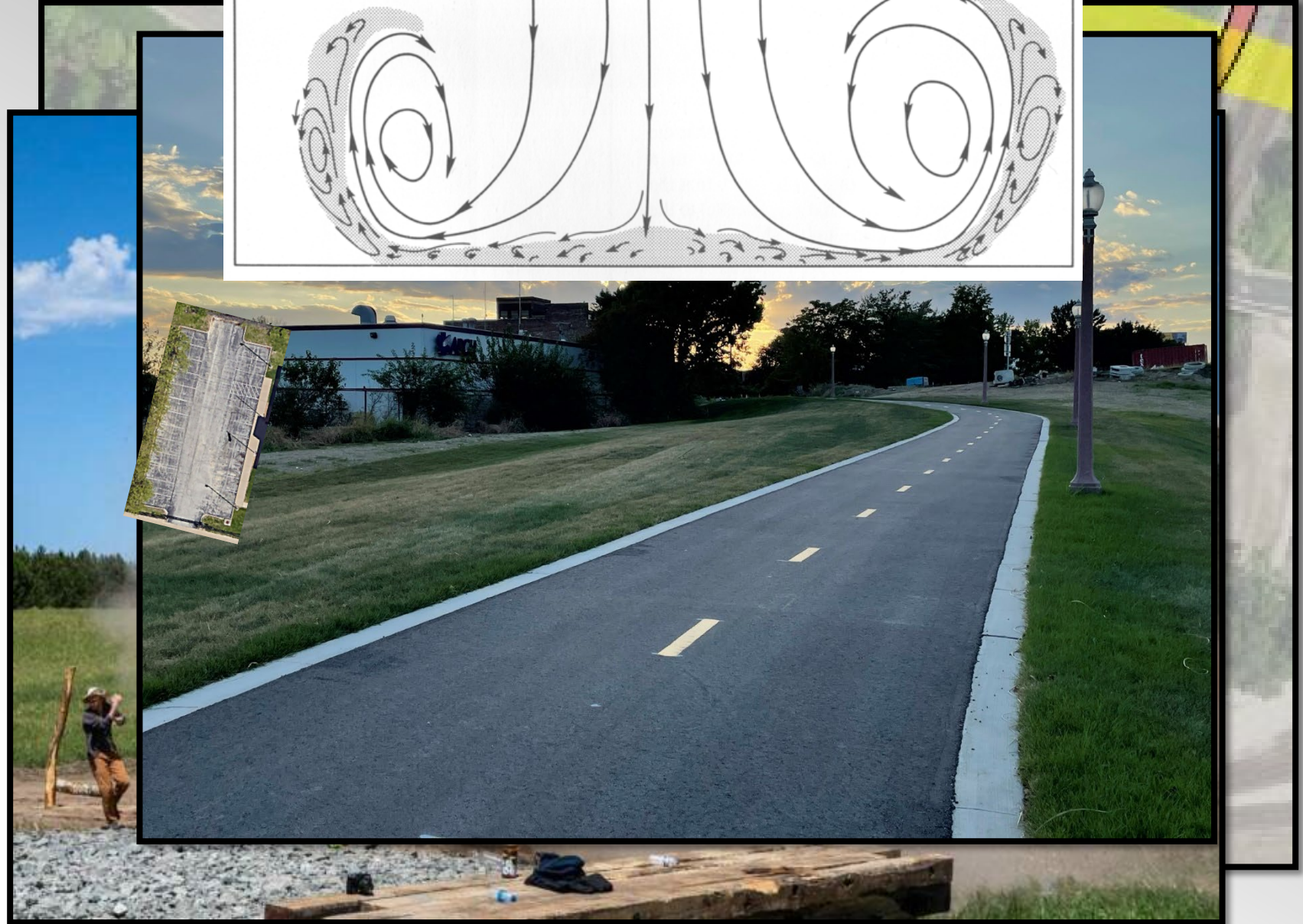
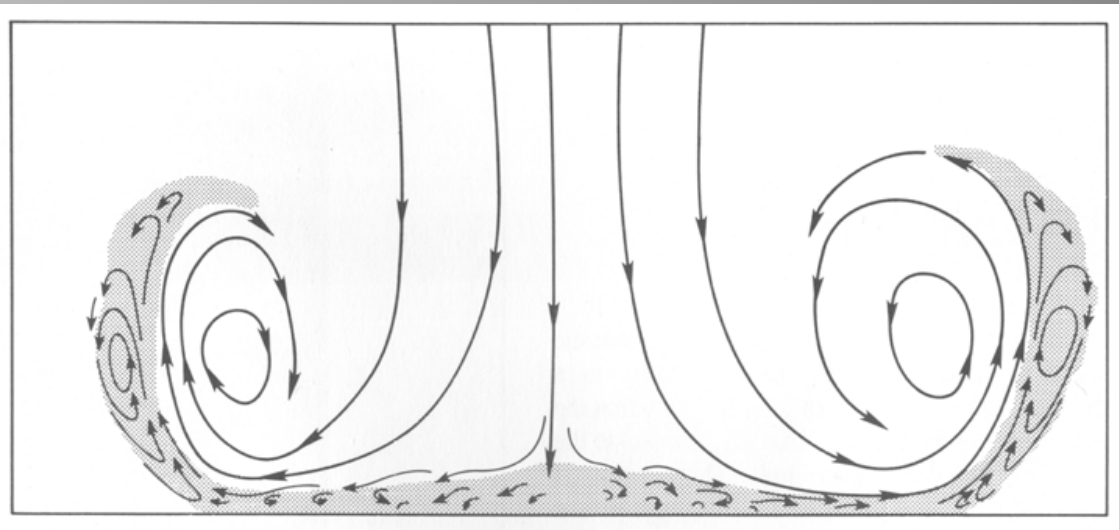




# SOUTH OF I-64

## SCOTT & 22<sup>ND</sup>

- Arch Air
- Parking Lot relocation
- SUP Location
- Rotor Downwash





# SOUTH OF I-64

## SHARED USE PATH

- Utilized existing interstate bridge over abandoned off ramp





# NORTH OF I-64

## SHARED USE PATH

- Shared Use Path at 21st Street





# NORTH OF I-64

## MARKET STREET – BRICKLINE GREENWAY BY GRG

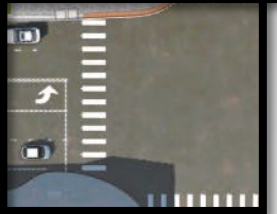
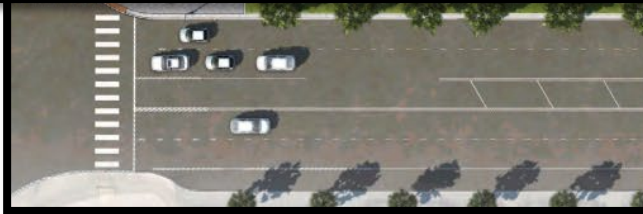
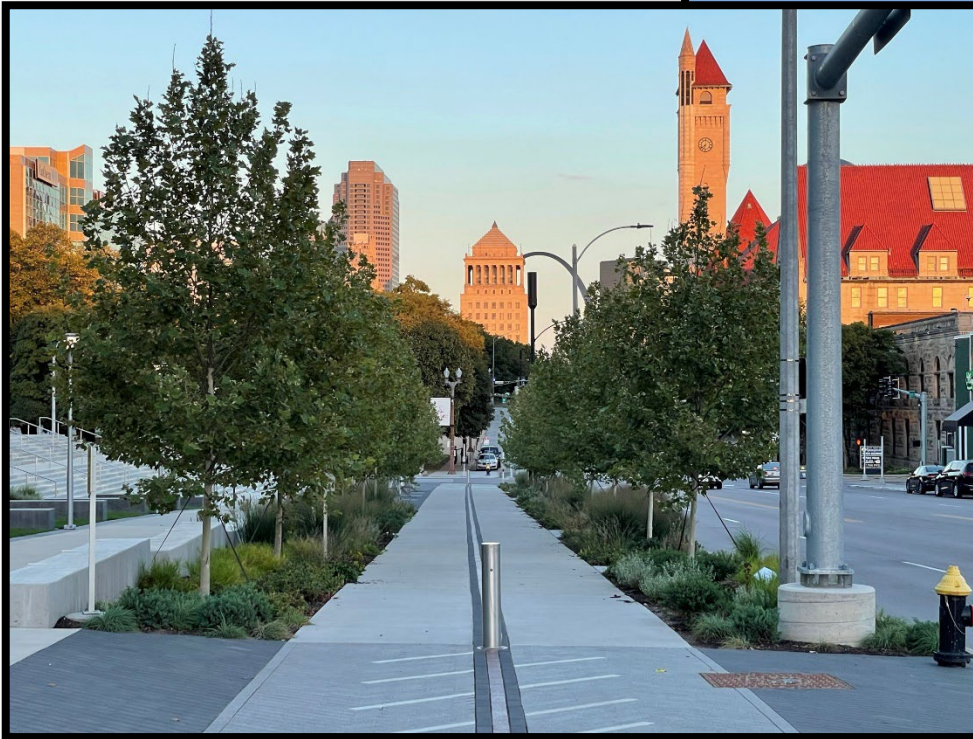


Rendering Courtesy of Lamar Johnson Collaborative



# NORTH OF I-64

## MARKET STREET – BRICKLINE GREENWAY BY GRG



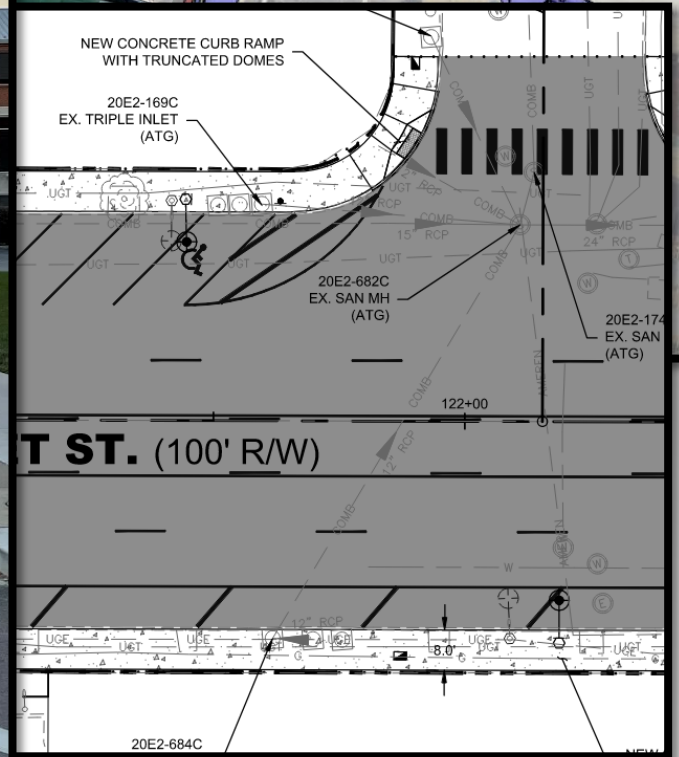
Collaborative



# NORTH OF I-64

## SHARED USE PATH

- Market Road Diet
- Brickline Greenway Reserve Area





# CLARK STREET

## LOOKING EAST





# MARKET STREET

## LOOKING EAST



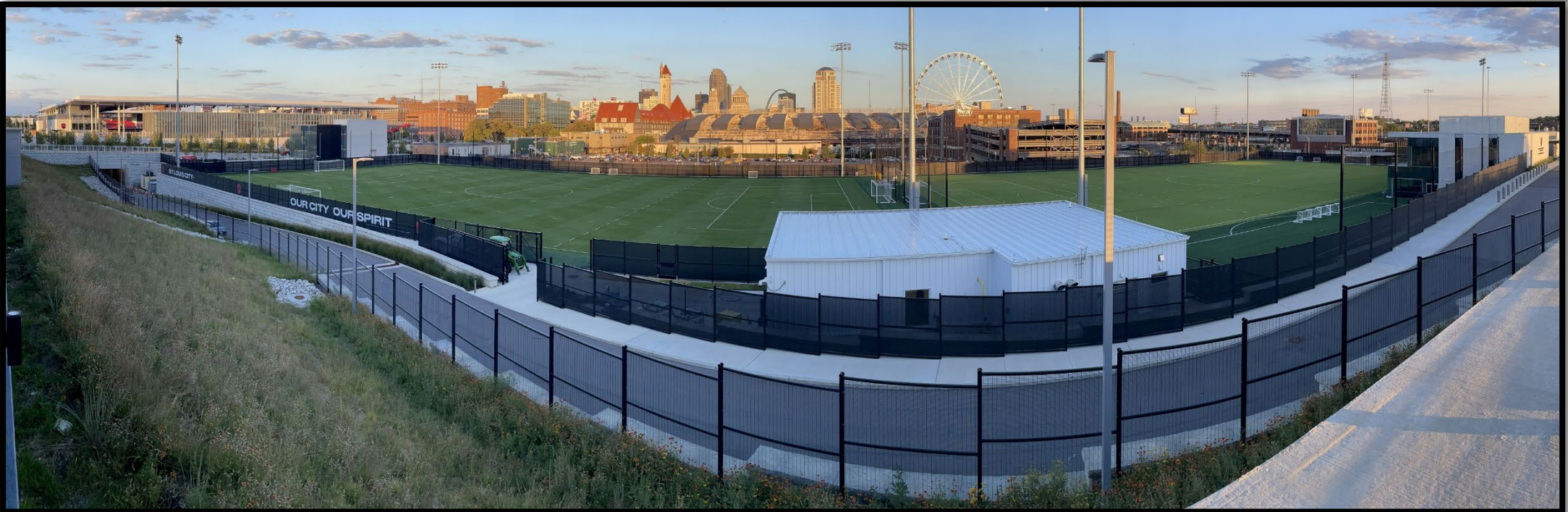


# 22<sup>ND</sup> STREET

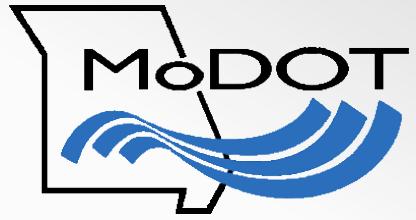
## LOOKING NORTH











**QUESTIONS?**