

\$50M Railroad Safety Improvement – *Passenger Rail Corridor Studies*

2024 TEAM Conference

March 14, 2024



Today's Speakers



Jerica Holtsclaw, PE
Multimodal Operations Director



Chris Ryan, PE
Project Manager



Matt DeMoss, PE
Deputy Project Manager

History

- MoDOT Budget Request – *Fall 2022*
- Governor's Request – *Jan 2023*
- Passenger Rail Corridor Studies Began – *March 2023*
- Passed by Missouri Legislature – *May 2023*
- Passenger Rail Corridor Studies Final – *July 2023*
- Press Conference Kick-off – *Aug 2023*

Missouri Passenger Rail Corridors



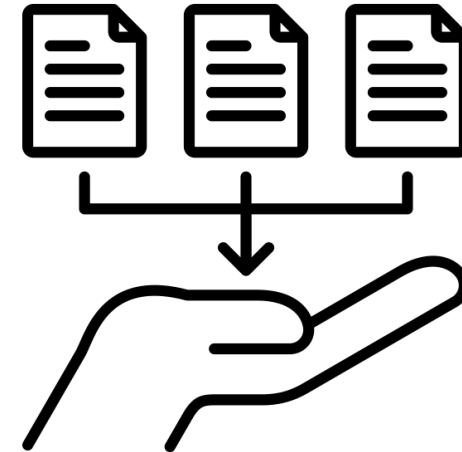
Data Driven Results

- Independent Analysis
- Multiple forms/sources of data
 - Similar data sources as highways
- CMT/HDR
 - Joint Consultant team to deliver Independent, Safety-Focused Analysis



Data Collection is Key!

- MoDOT Rail Crossing Inventory System (RCIS)
- FRA Grade Crossing inventory System (GCIS)
- FRA Accident/Incident Data
- FRA Accident Prediction Model (New ZINB Model)
- Blocked Crossing Reports
- Aerial and Street View Review
- Field Review
- StreetLight Insight Data
- Replica and HERE Routing API
- Census Data (Population Density)



Data Collection: *StreetLight Insight*

- StreetLight used to supplement crossing inventory data
- **ADT:** Used to fill in gaps for crossings with missing or old traffic volumes
- **Ped Volumes:** Used to identify high-pedestrian crossings and prioritize potential improvements
- **Trucks:** Used to prioritize vertical profile (humped crossing) improvements

Figure 10. StreetLight Insight Interface Example – Zone Definition

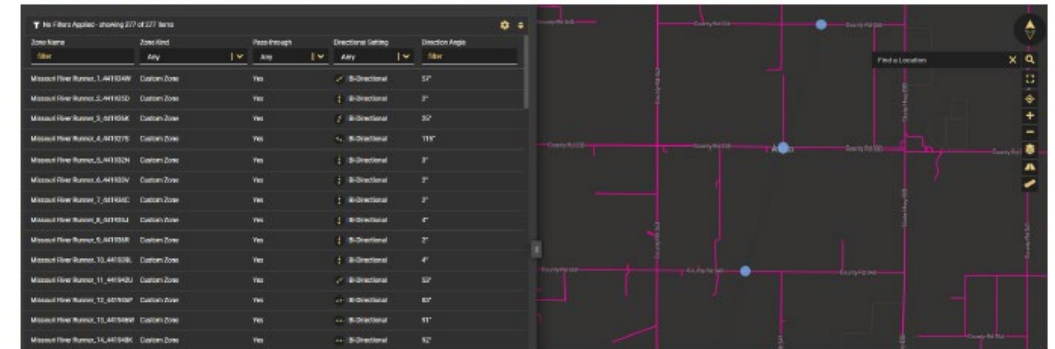
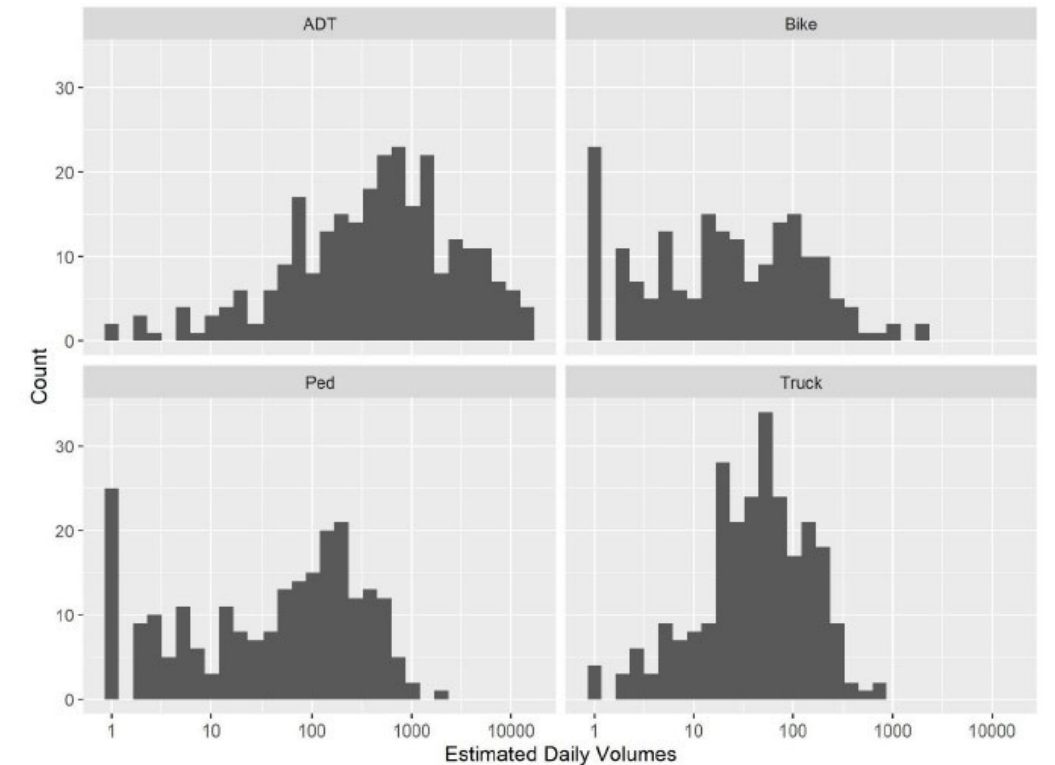


Figure 11. Distribution of Estimated Daily Traffic Volumes by Mode

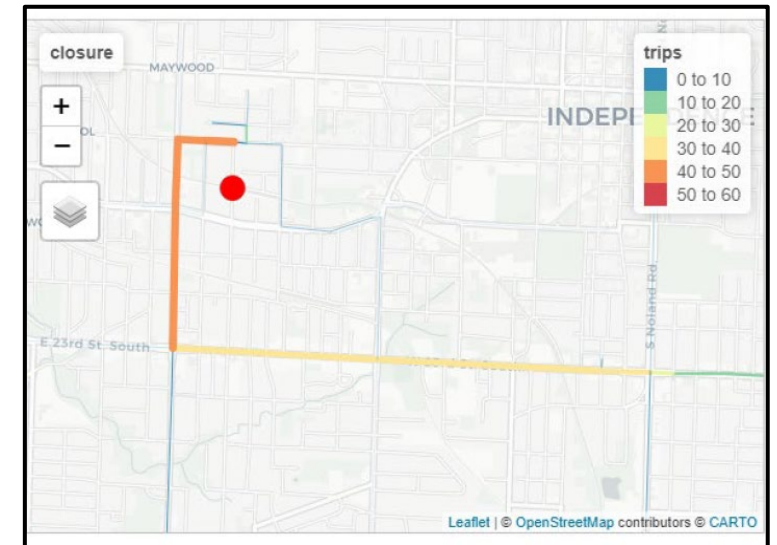
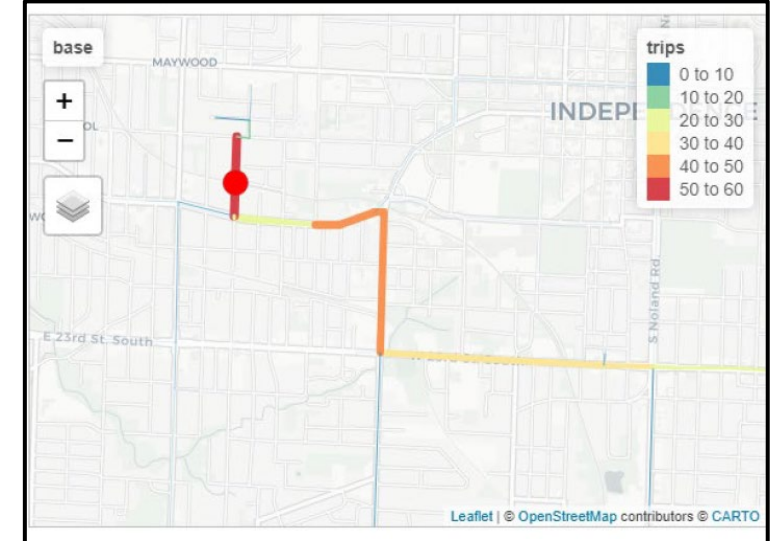


Data Collection:

Replica and HERE Routing API

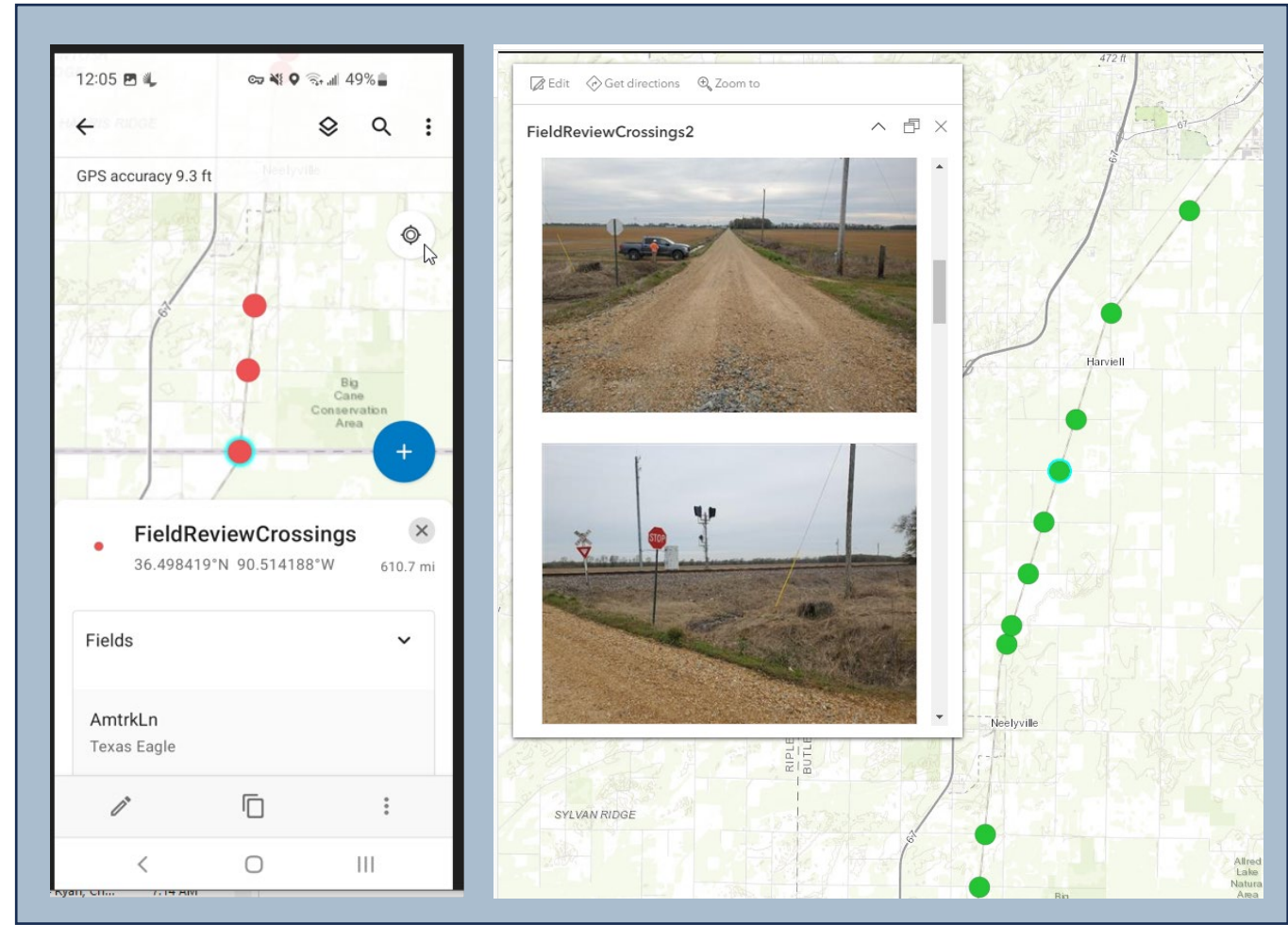
- Used Replica to estimate origins and destinations of trips using the crossings
- Used HERE Routing API to generate travel path and estimated travel time for OD pairs (sampling used)
- Ran additional routing with crossing closed
- Delay/travel time impacts used to identify good closure candidates
- Delay/travel time will be used in upcoming grant applications

HERE Routing API Output Example

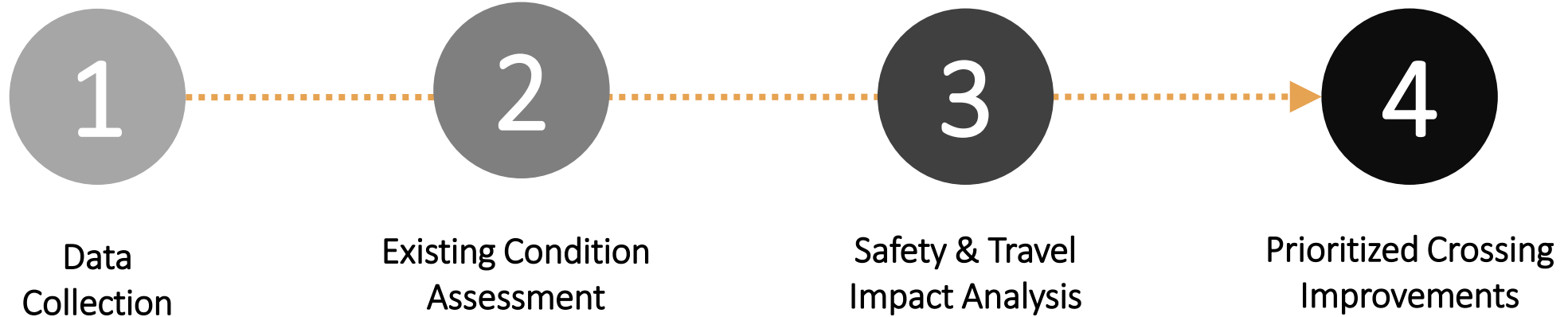


Data Collection: *Field Reviews*

- Team used ArcGIS Online and Field Map mobile app to collect photos and field notes
- Allows for quick review of progress and confirmation of photos and notes later in the project



Prioritizing Rail Safety



Phased Implementation

Tier I Improvements

- 0-1 YR Implementation
- Immediate Closures
- Passive Upgrades (Lights & Gates)
- Public to Private Status Change

Tier II Improvements

- 1-1.5 YR Implementation
- Closures of Crossings (Ex. Lights of Gates)
- Signing & Pavement Marking Enhancements
- Added Sidelights/Visibility
- Profile Adjustments

Tier III Improvements

- 1.5-3 YR Implementation
- Grade-Separations
- Closure of Crossings w/ Roadway Improvements
- Cost-Share Improvements
- Crossing Geometry Realignment

Tier IV Improvements

- 3+ YR Implementation
- Grade-Separation (requires additional Feasibility Study)
- Corridor Consolidation (2+ Adjacent Crossings)
- Cost-Share Improvements
- Grant Funding Opp.

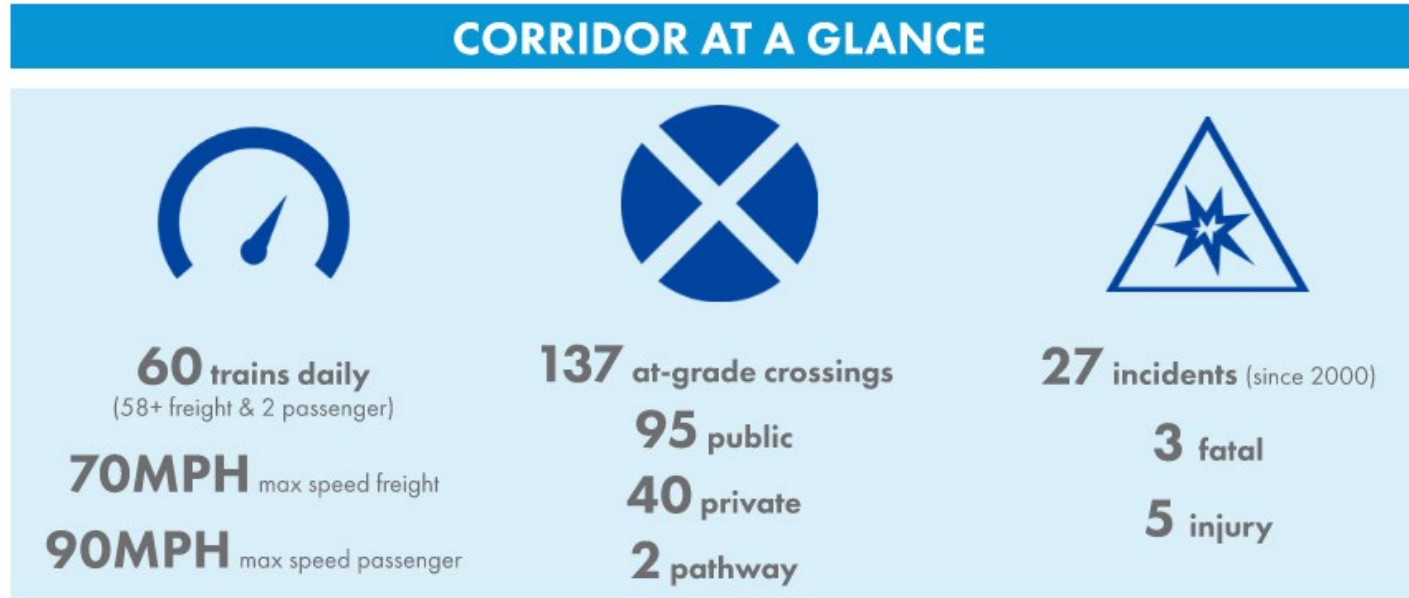
NOW

1 – 1.5 YEARS

3 YEARS

3 + YEARS

SW Chief: Existing Conditions



Existing Corridor Exposure Index Rating:
160,661 → (1,728 Avg. / Crossing)

Existing Corridor Crash Prediction:
3.48 (Annually)

- 0.51 Fatal / 1.02 Injury

BNSF MARCELINE SUBDIVISION - SW CHIEF PASSENGER LINE TOTAL INCIDENTS (2000-2022)	
TYPE	# INCIDENTS
FATAL	3
INJURY	5
PDO	19
TOTAL # INCIDENTS	27

*Incidents reported by FRA as of 12/31/2022



1.23 Average Annual Incidents

SW Chief: Proposed Improvements

Tier I-IV Corridor Recommendations

Corridor Recommendations*

(Long - Term)



24
Closures



8
Upgrades
(lights & gates)



3
Passive Enhancements



3
Crossing
Realignments



34
Advanced
Warning
Enhancements



2
Added
Side
Flashers



4
ADA Path
Improvements



7+
Miles Connector
Roads



4
Grade
Separations



7
Approach
Grade
Improvements

*inclusive of Tier I Improvements



Tier I Improvements

- 80% Reduction in Exposure Index
- 12% Reduction in Annual Crash Prediction

Tier I Safety Benefits



Tier I - IV Safety Benefits

- 90% Reduction in Exposure Index
- 23% Reduction in Annual Crash Prediction

MO River Runner: Existing Conditions

Assessing Today's Corridor (existing conditions)



277 mile corridor
12 local counties
39 road jurisdictions



15-34 daily freight trains
4 daily passenger trains
79 mph max speed



168 public
at-grade crossings
6 passive
162 active



Missouri River Runner

MO River Runner: Proposed Improvements



15 Active Warning Device Modifications



121 Advance Warning Flashing Signs (AWFS)



25 Closure/Consolidation



2 Grade Separation or Study



3 Public-to-Private Conversions



23 Roadway Modification



2 Security Gates



174 Signage and Pavement Markings



106 Street Lighting



14 Other



- Closure/Consolidation
- ▲ Active Warning Device Modifications
- Other (Adv. Warn. Fish. Signs, Street Lighting, etc.)
- Public-to-Private Conversion
- ◆ Grade Separation or Study

Texas Eagle: Existing Conditions

Assessing Today's Corridor (existing conditions)



185 mile corridor
7 local counties
23 road jurisdictions












3-21 daily freight trains
2 daily passenger trains
75 mph max speed

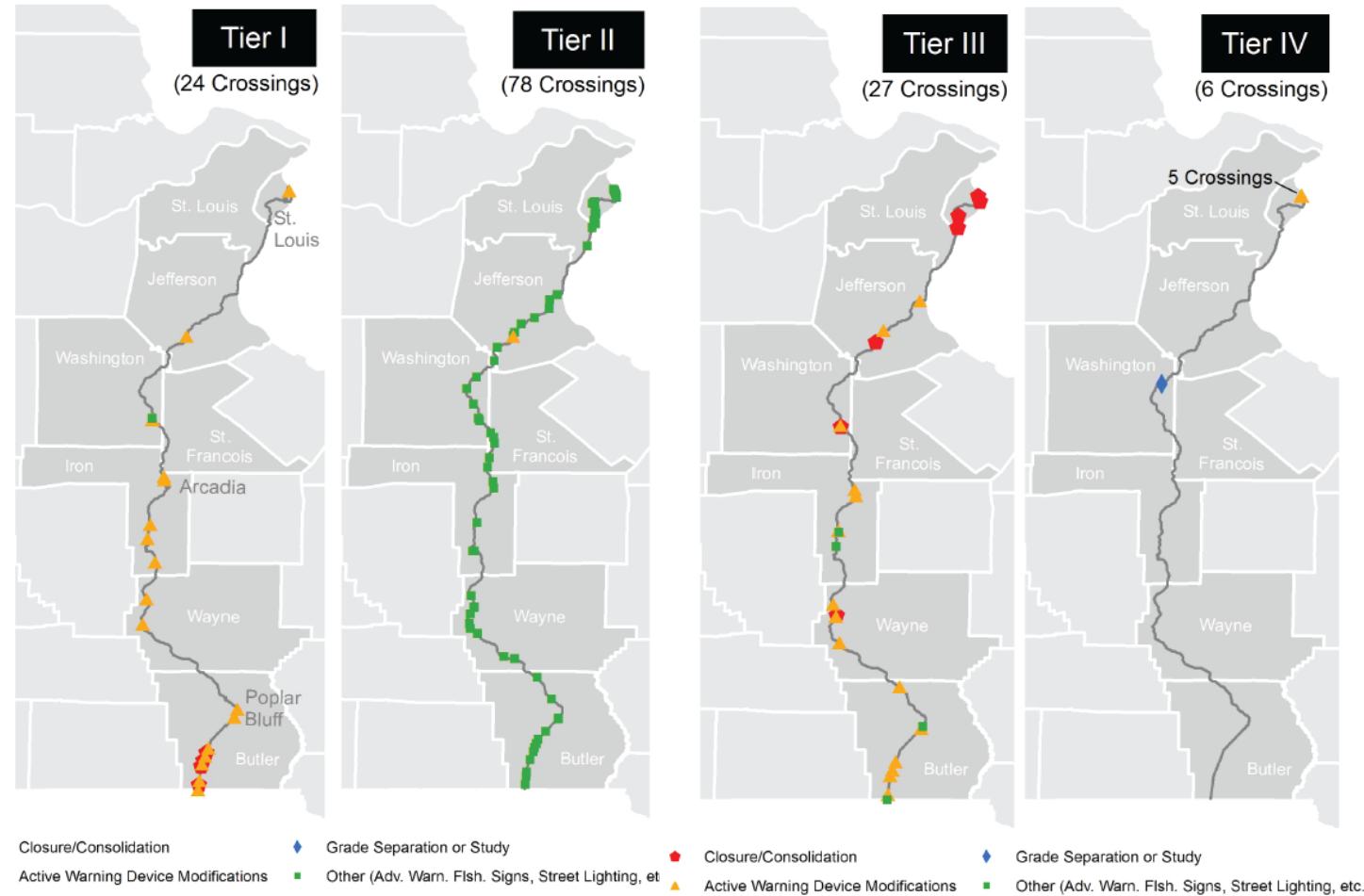


98 public
at-grade crossings
25 passive
73 active



Texas Eagle: Proposed Improvements

- 
36 Active Warning Device Modifications
- 
2 Grade Separation or Study
- 
73 Advance Warning Flashing Signs (AWFS)
- 
6 Roadway Modification
- 
12 Closure/Consolidation
- 
1 Security Gate
- 
90 Signage and Pavement Markings
- 
58 Street Lighting
- 
6 Other



Enhancing Safety on Missouri's Passenger Rail Corridors

MISSOURI PASSENGER STUDY

Public At-Grade Tier 1 Improvements



27

UPGRADES
(LIGHTS & GATES)



17

CLOSURES



2

SECURITY GATE
SYSTEM



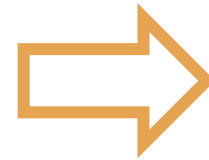
3

PUBLIC TO PRIVATE
(STATUS CHANGE)



3

PASSIVE ENHANCEMENTS



\$18.5M

ESTIMATED COST

(TIER I)

Q&A

Questions?