



JEFFERSON COUNTY

I-55 Corridor Improvements Design-Build Project

Maximizing Reliability and Safety on Interstate 55

Transportation Engineers Association of Missouri

March 14, 2024

Jenn Becker, PE

Justin Wolf, PE

Project Location



Accelerated Project Timeline

project kickoff

jul
2021

- analyze existing conditions
- develop alternatives
- complete conceptual report

project delivery
determination

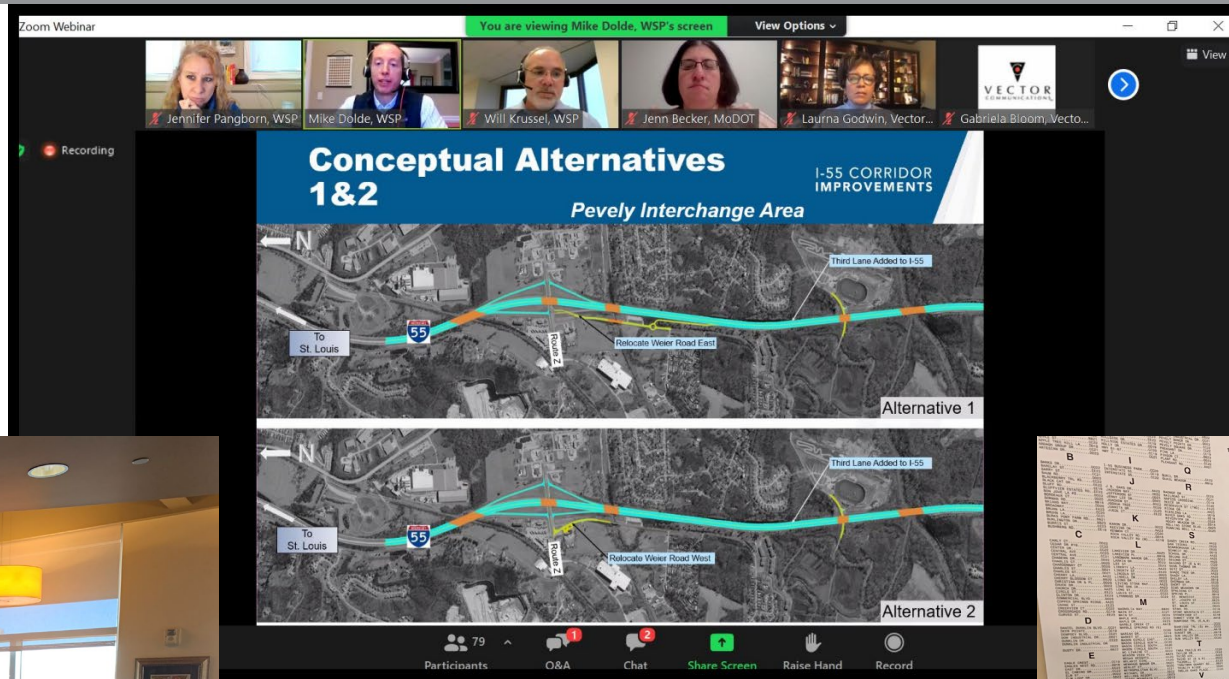
apr
2022

preliminary engineering
activities for design-build rfp

RFP

mar
2023

Public Involvement



Project Needs: Safety

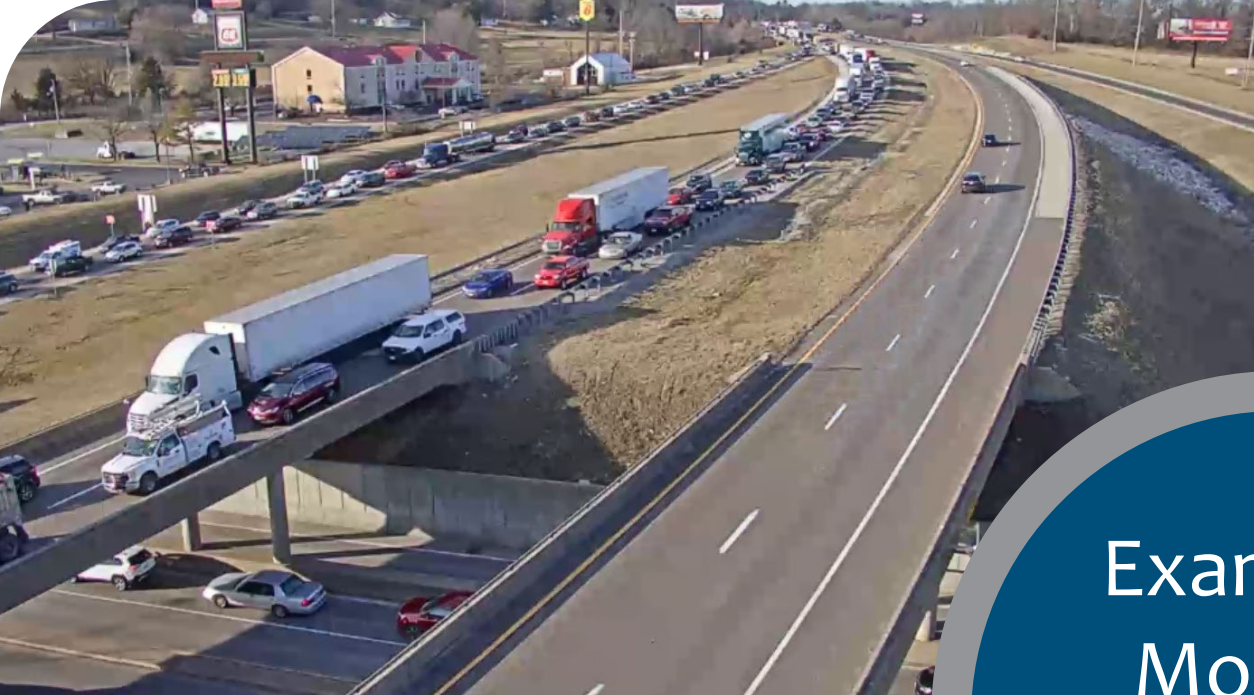
- One of the heaviest traveled interstates in Missouri
- I-55: 70,000 ADT, US 67: 35,000 ADT
- I-55: 16% heavy trucks, US 67: 8.6% heavy trucks

2017-2021 I-55 Crashes Data	
TYPE	ALL CRASHES
Fatal	6
Serious/Disabling	24
Minor	153
PDO	665
TOTAL	848

2017-2021 US 67 Crashes Data	
TYPE	ALL CRASHES
Fatal	2
Serious/Disabling	6
Minor	61
PDO	207
TOTAL	276

Project Needs: Corridor Reliability





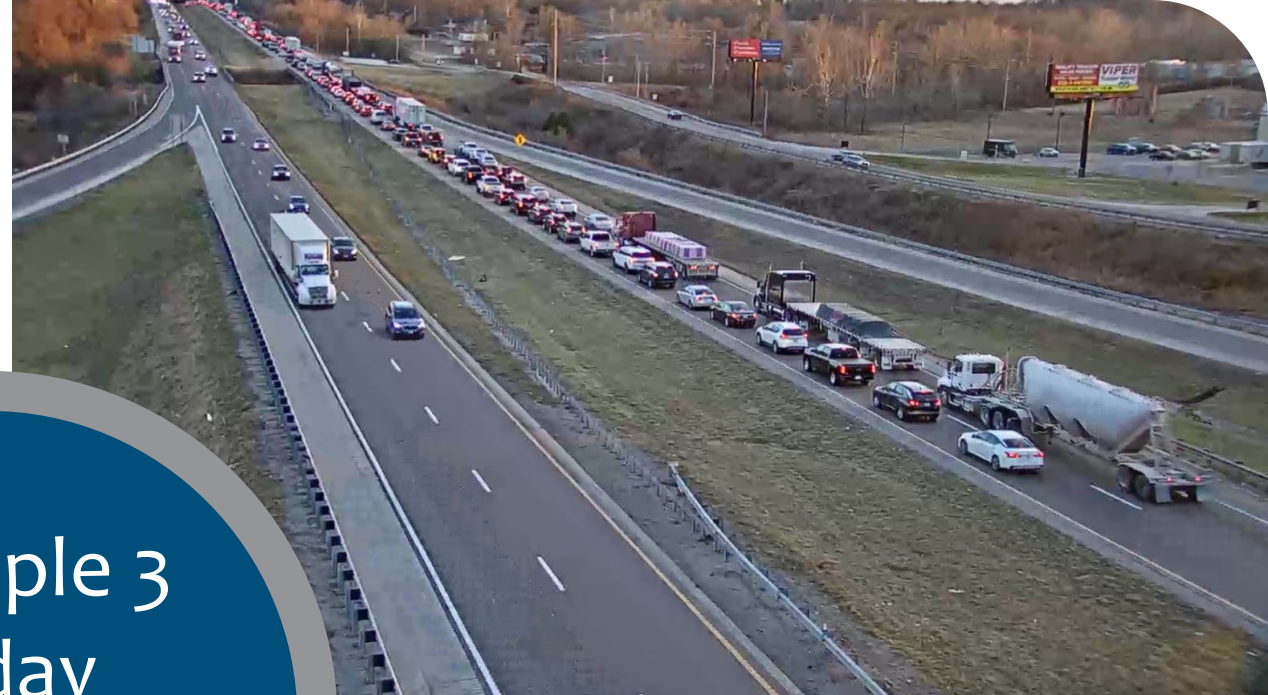
Example 1
Monday
February 5
PM rush



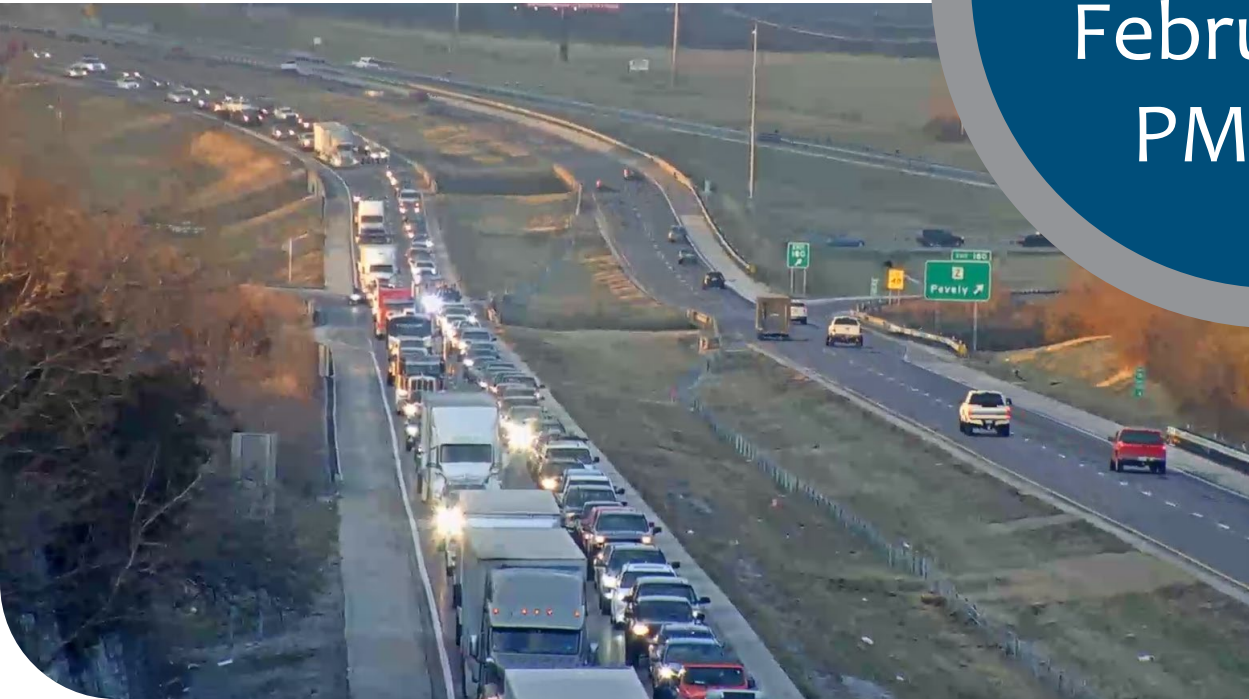


Example 2
Tuesday
February 6
AM rush





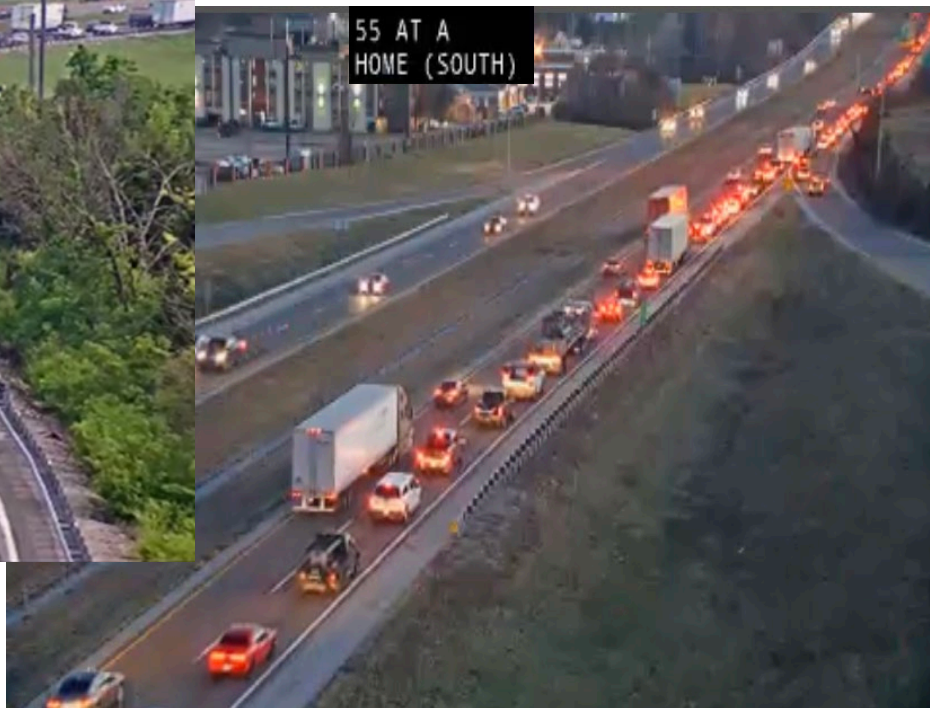
Example 3
Friday
February 23
PM rush



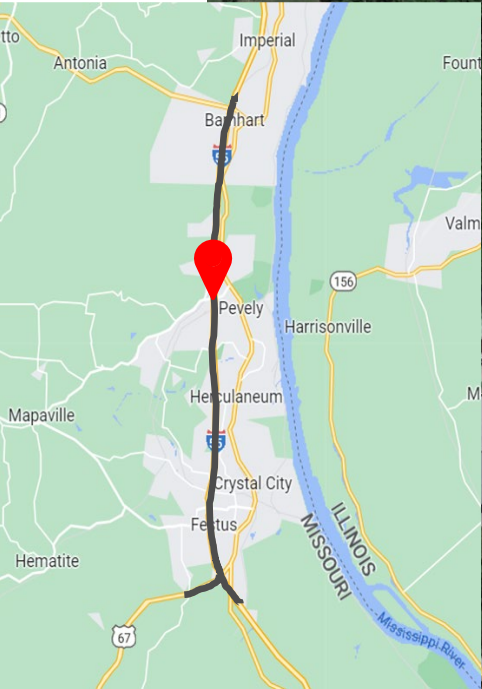
Project Needs: Freight



Project Needs: Peak Hour Congestion



Project Needs: I-55/Rt. Z



Project Needs: I-55/Rt. Z & McNutt Street

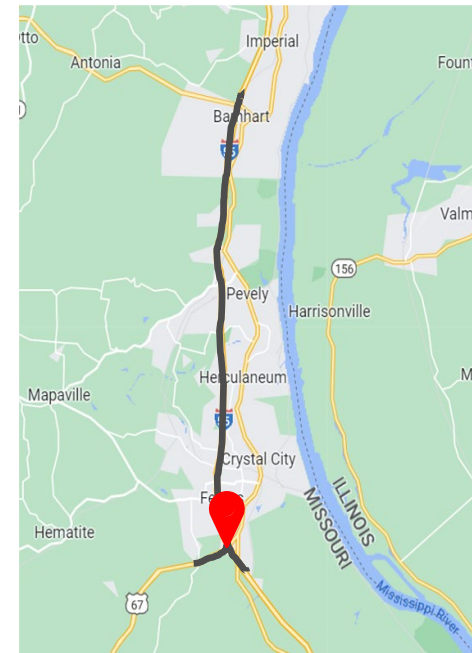


Project Needs: I-55/US 67

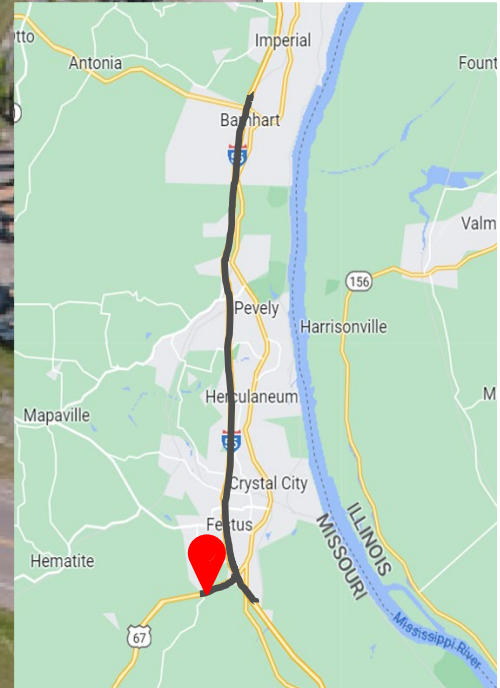


NB US 67 to
NB I-55
11,181 veh/day
peak hour:
1,400 veh/hour

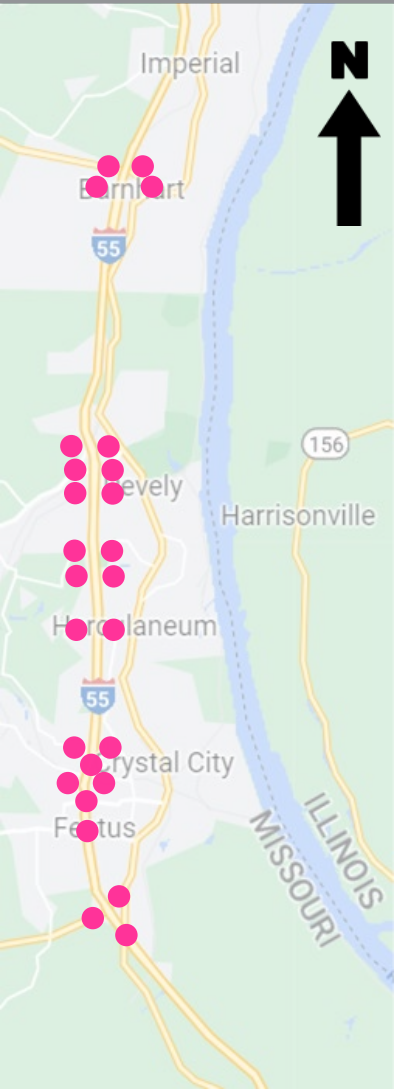
SB I-55 to
SB US 67
10,589 veh/day
peak hour:
1,400 veh/hour



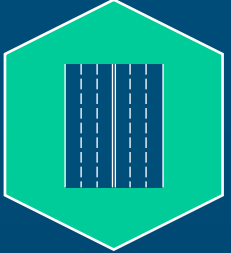
Project Needs: US 67/Rt. CC



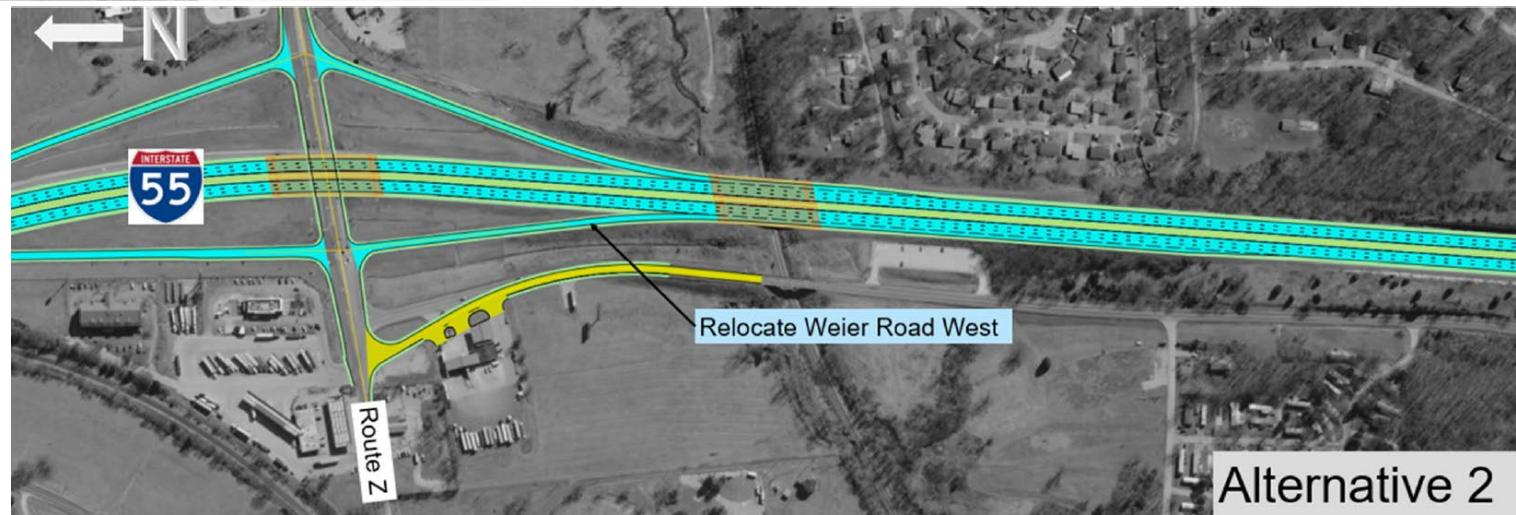
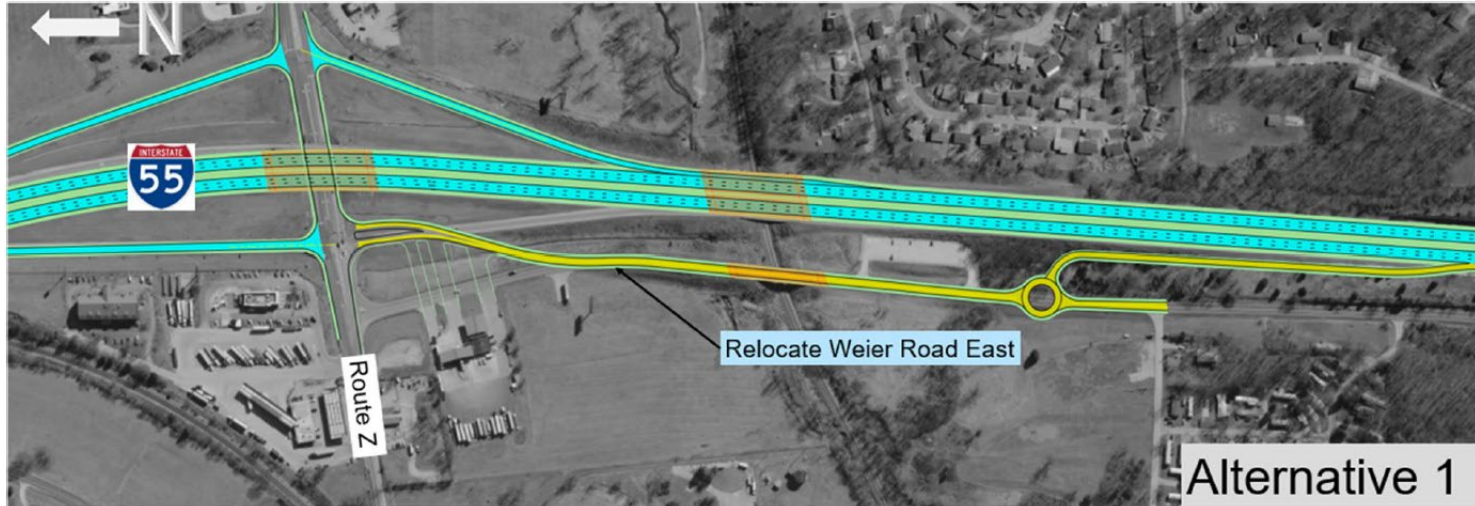
Project Needs: Infrastructure



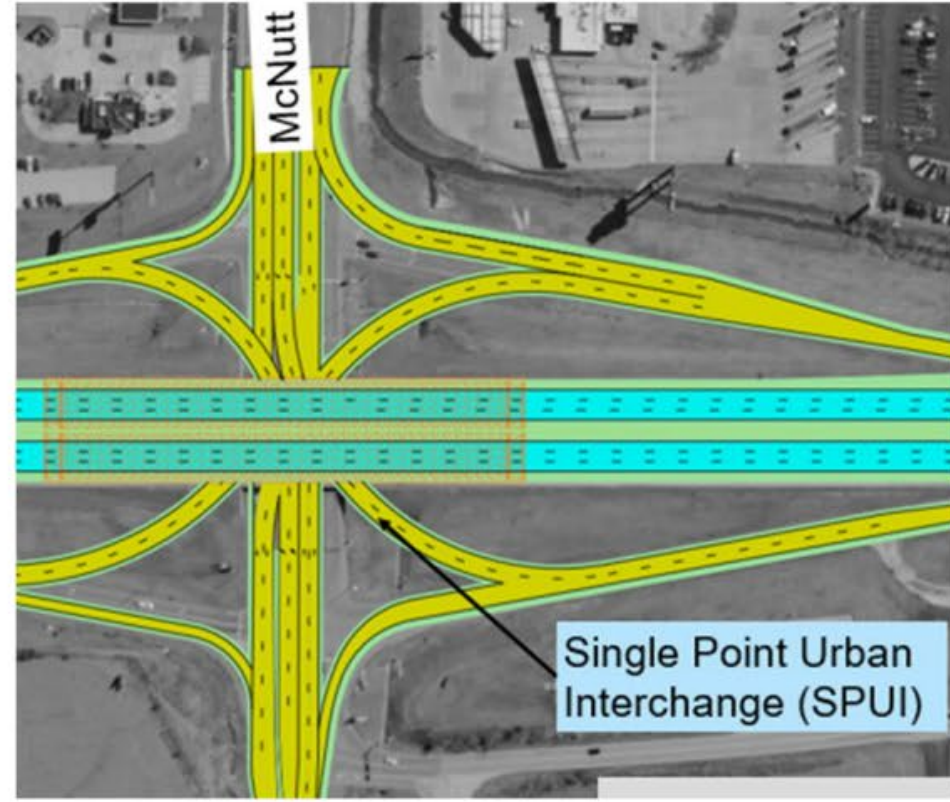
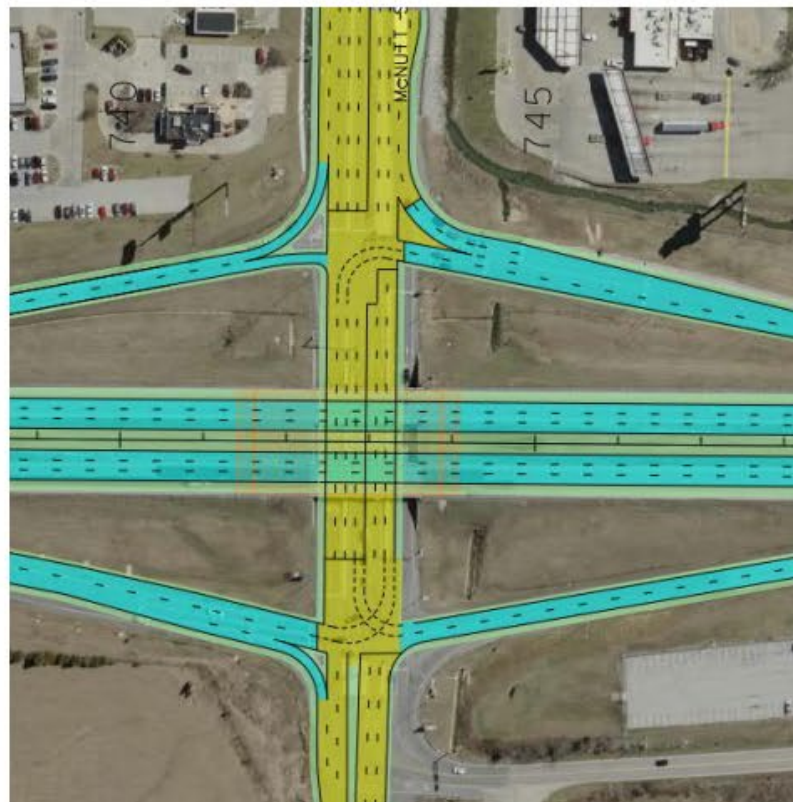
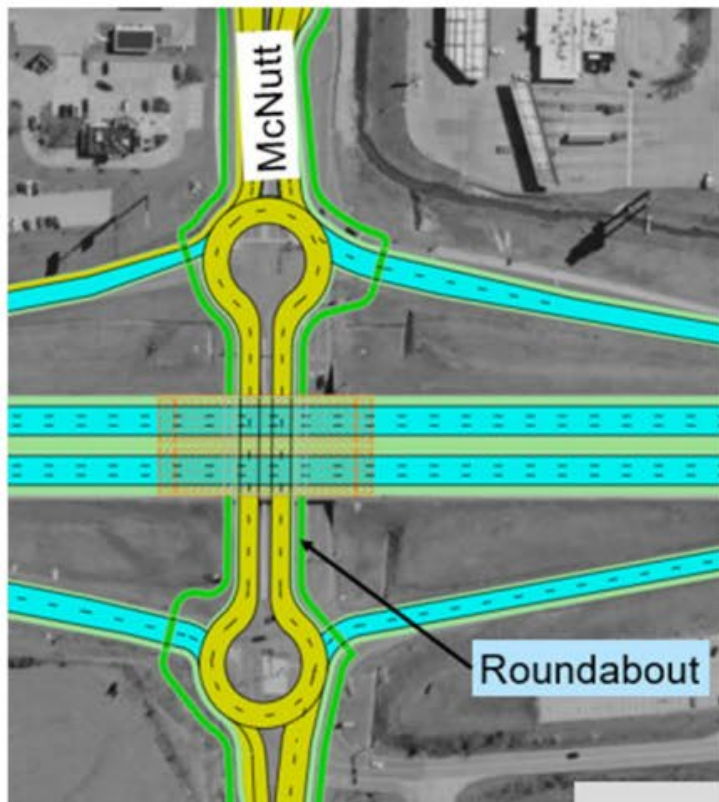
Solutions



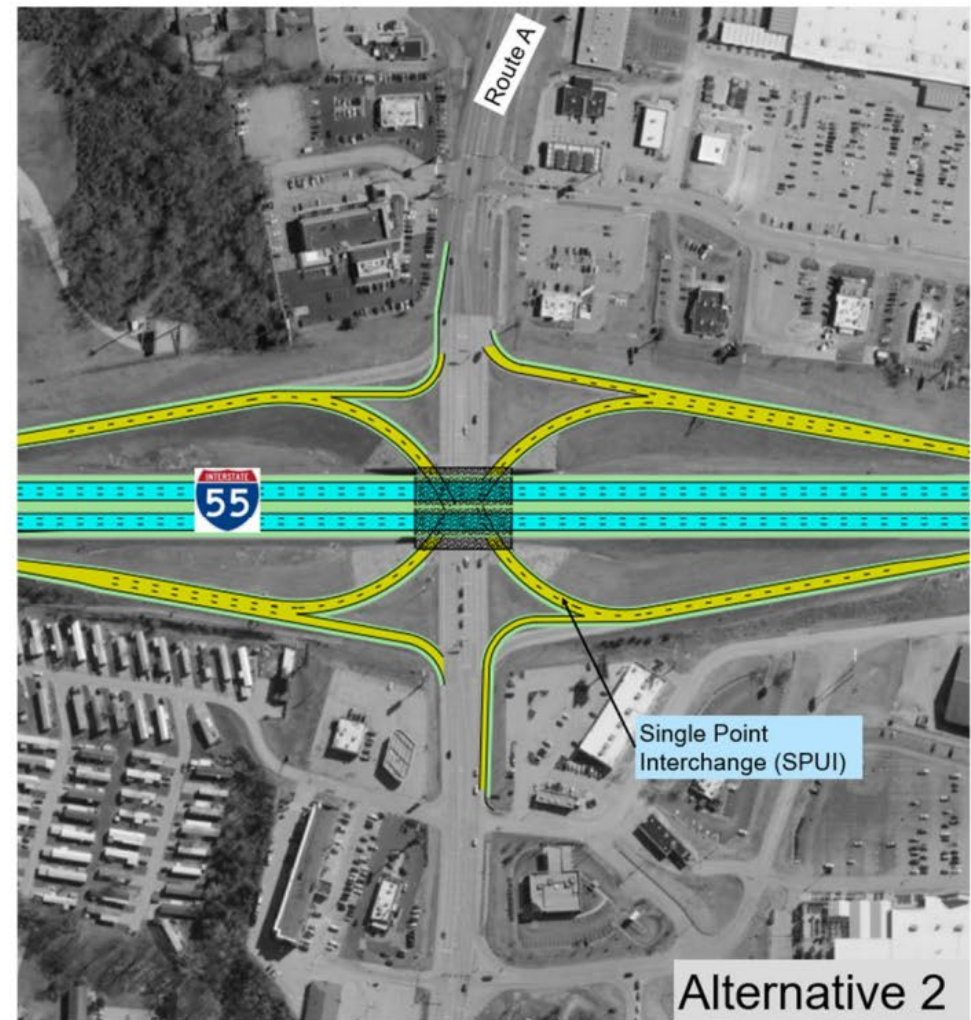
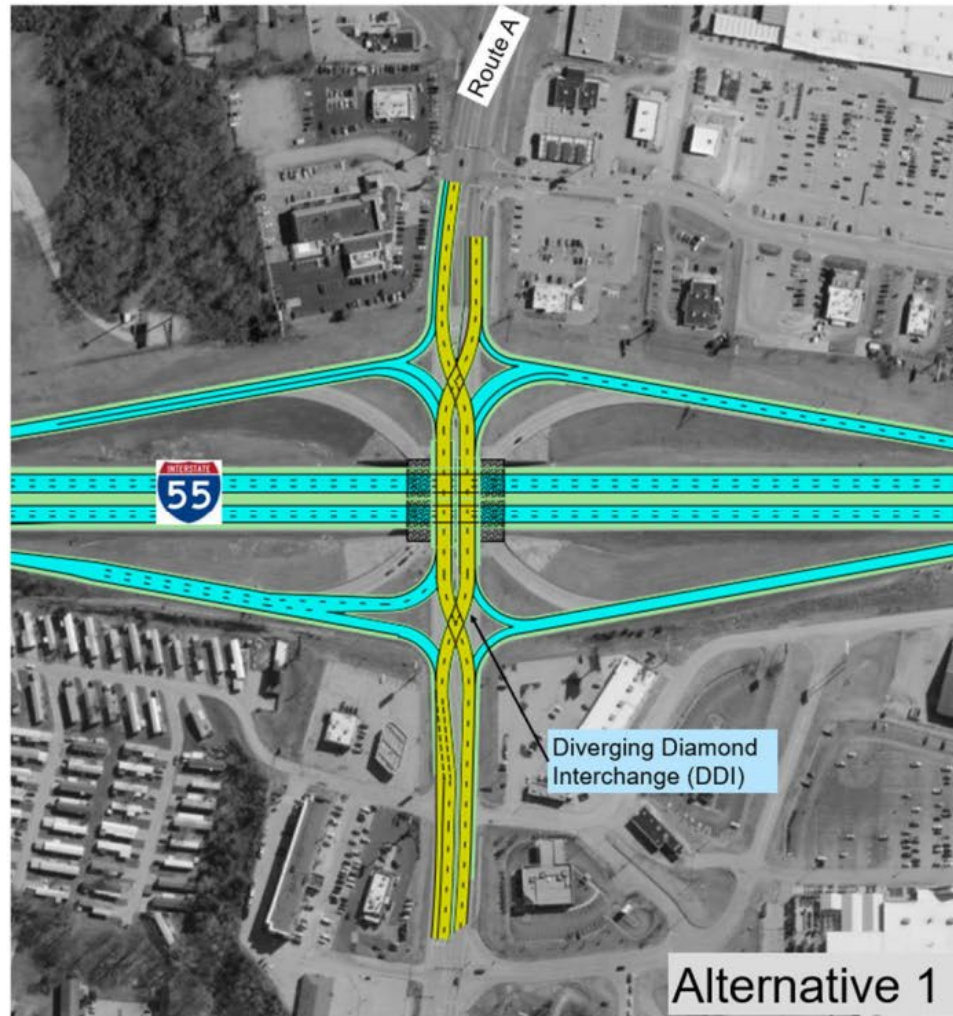
I-55/Rt. Z



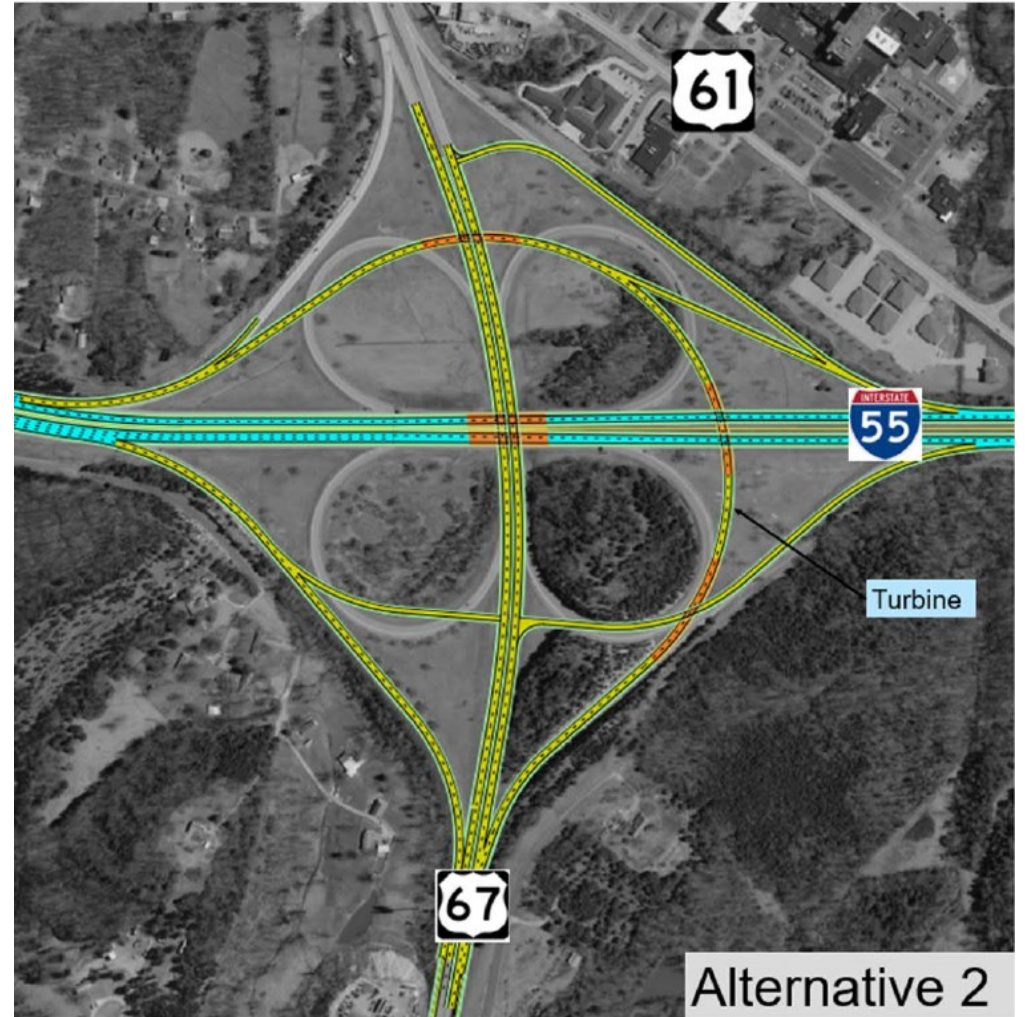
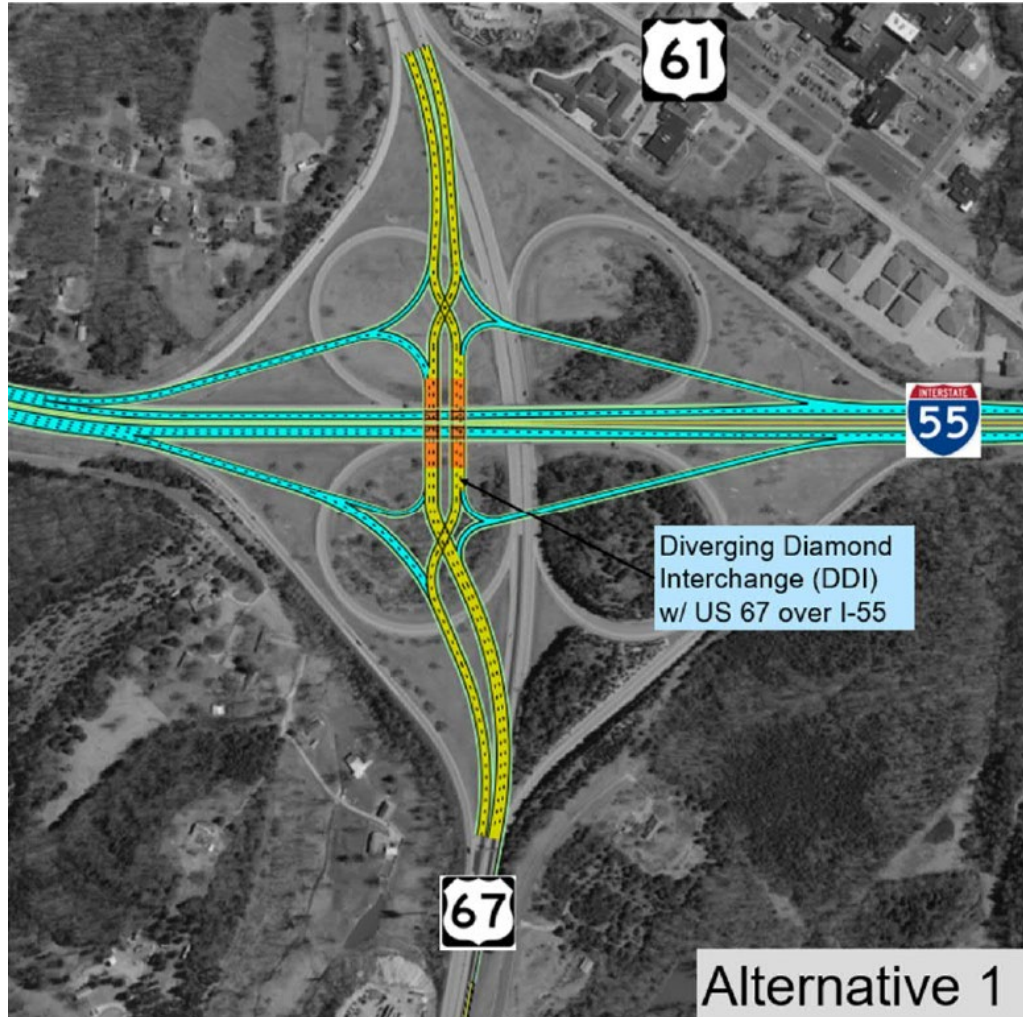
I-55/McNutt Street



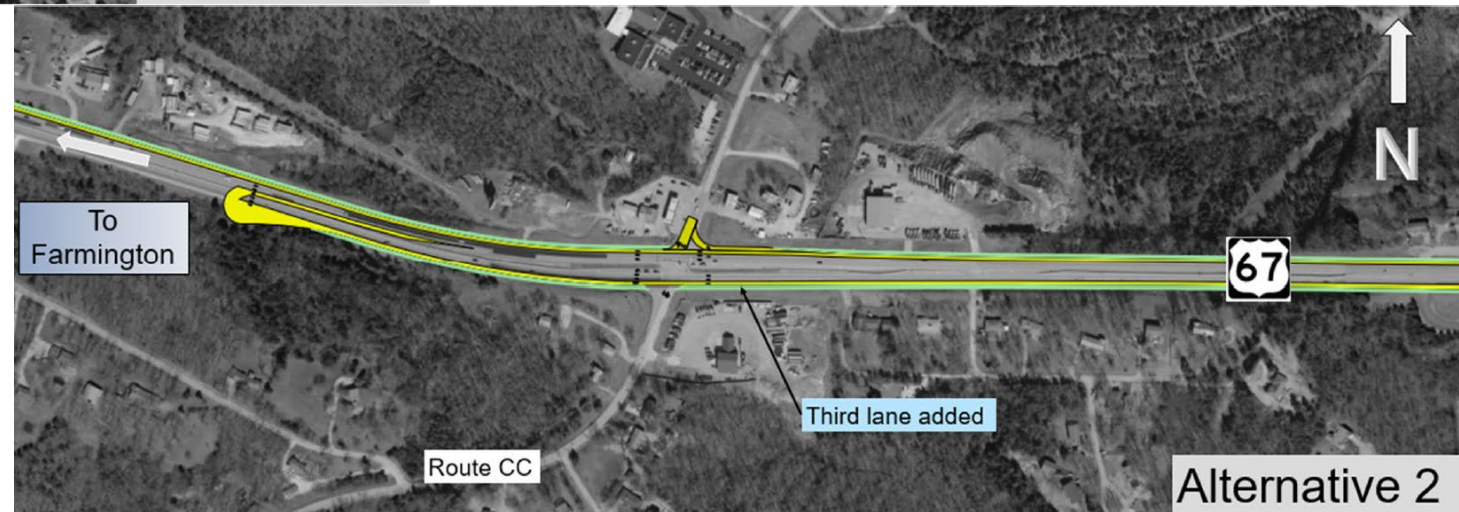
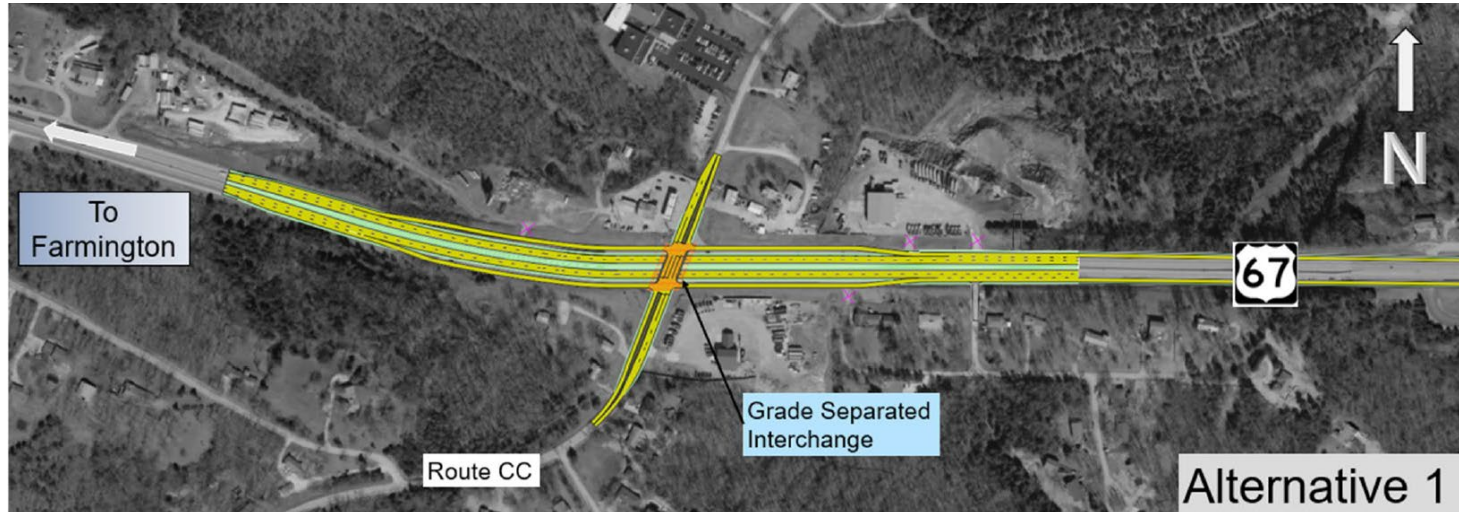
I-55/Route A



I-55/US 67



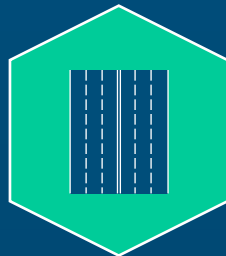
US 67/Rt. CC



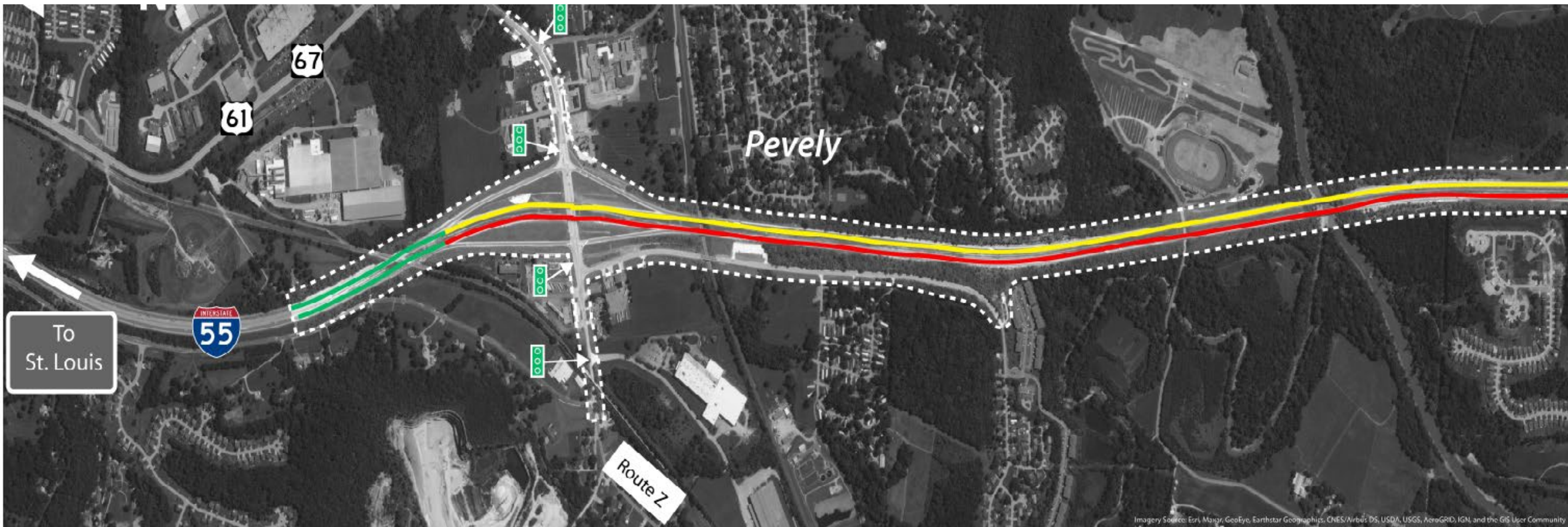
RFP



geometrics

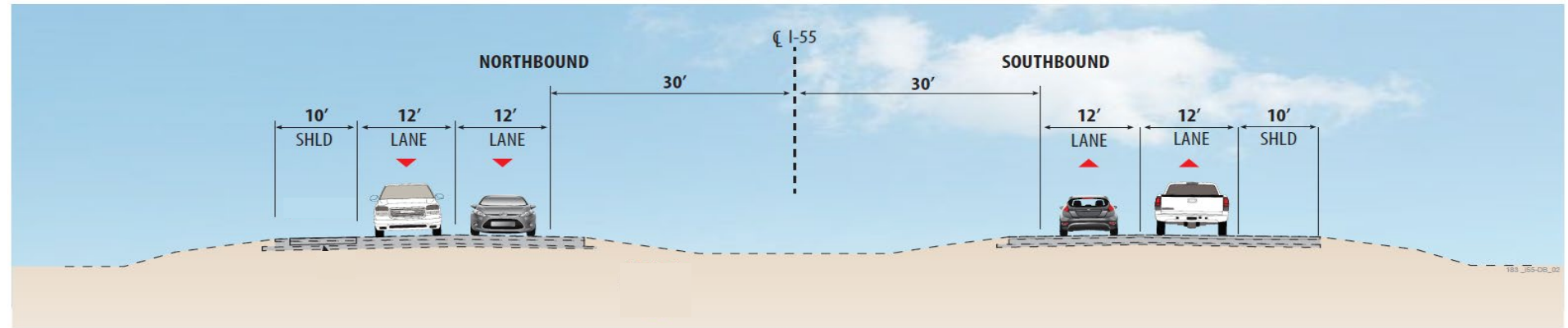


Interchange Improvements vs Third Lane

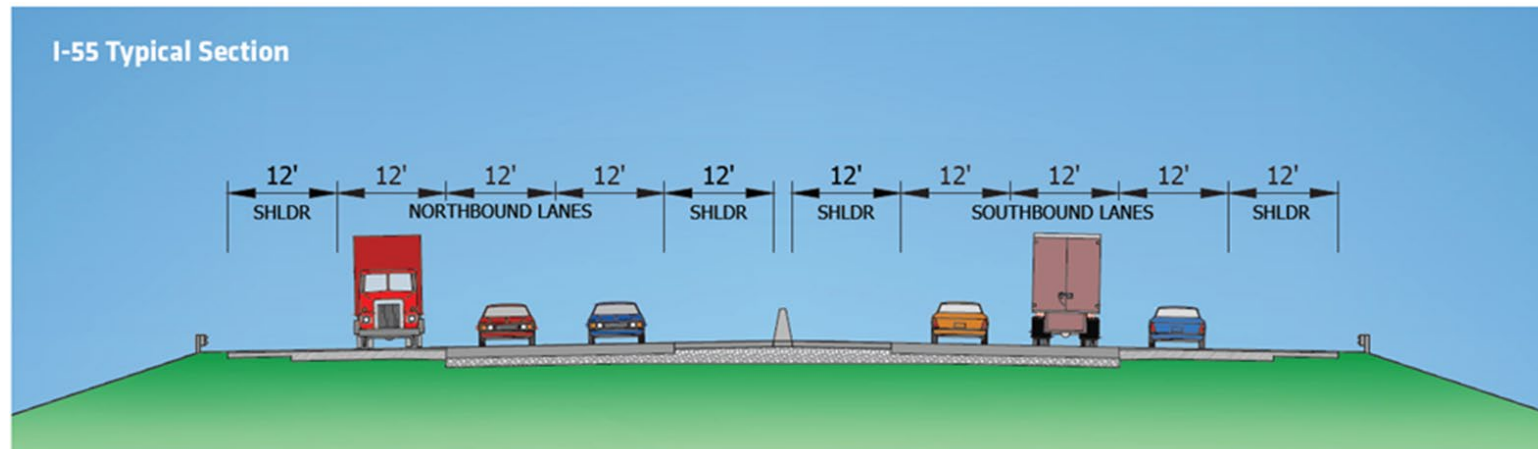


I-55

Existing



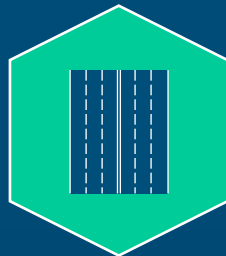
Future



RFP



structures



Structures



4

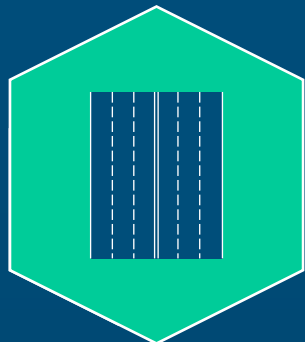


4



20

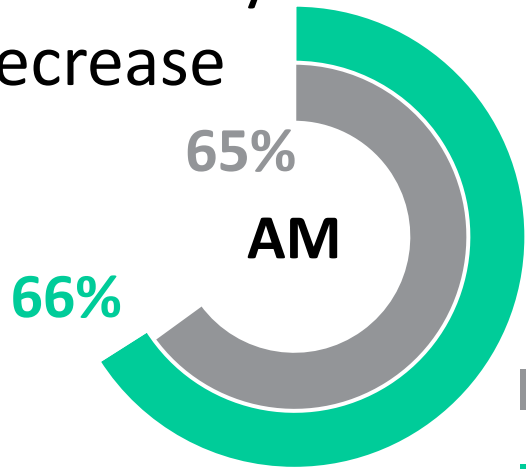
RFP



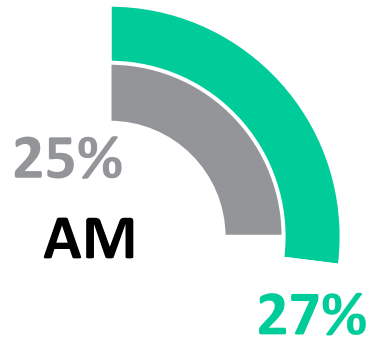
corridor operations

Corridor Operations Measures

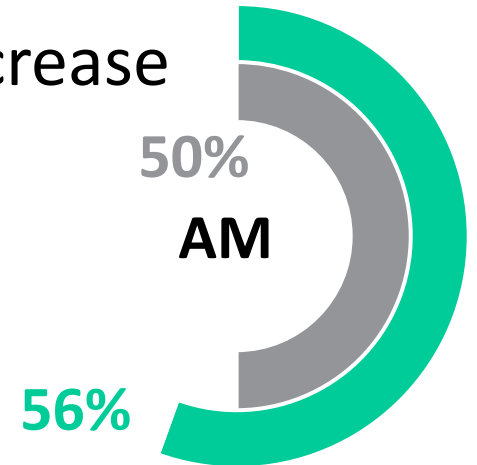
Total Delay
Decrease



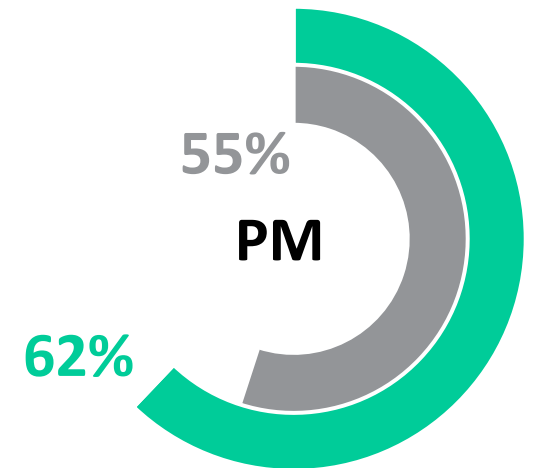
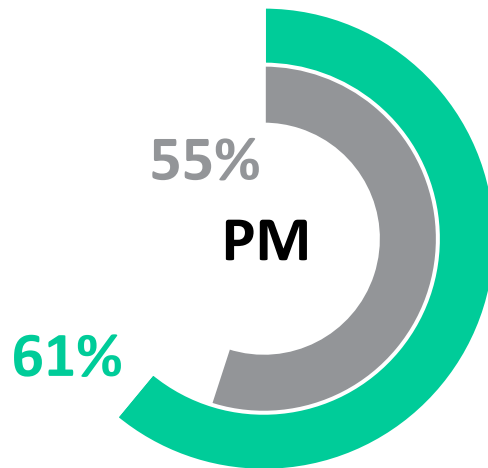
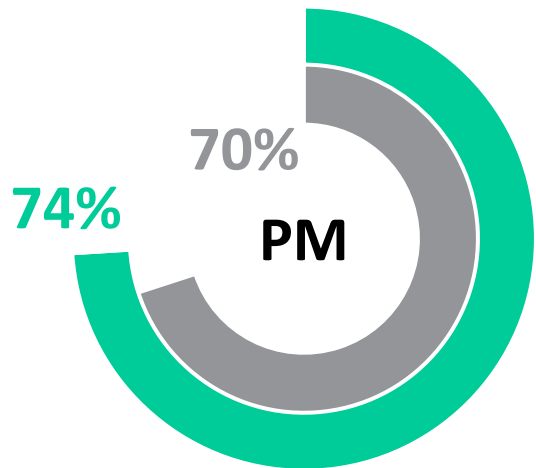
Avg. Travel
Speed
Increase



Travel Time
Decrease



■ Performance Measure
■ Recommended Alternative



Conclusion

