

Route D Road Safety Audit A New Standard

MoDOT: Jen Wade, P.E.



GBA: Nikki Conley, P.E.



Presentation Overview

WHAT IS AN
RSA

PROJECT
BACKGROUND

ROUTE D
PROCESS

PROCESS
IMPACT



GBA

What are the 6 main steps of a MoDOT RSA?

1. Conduct a pre-review meeting
2. Perform field reviews
3. Conduct review analysis and prepare report
4. Present findings to project owner
5. Prepare a formal response
6. Incorporate findings into a project



PUBLIC ENGAGEMENT



MoDOT EPG 907.2 Typical Road Safety Assessment Process

1. Conduct pre-review meeting for context
2. Perform field reviews

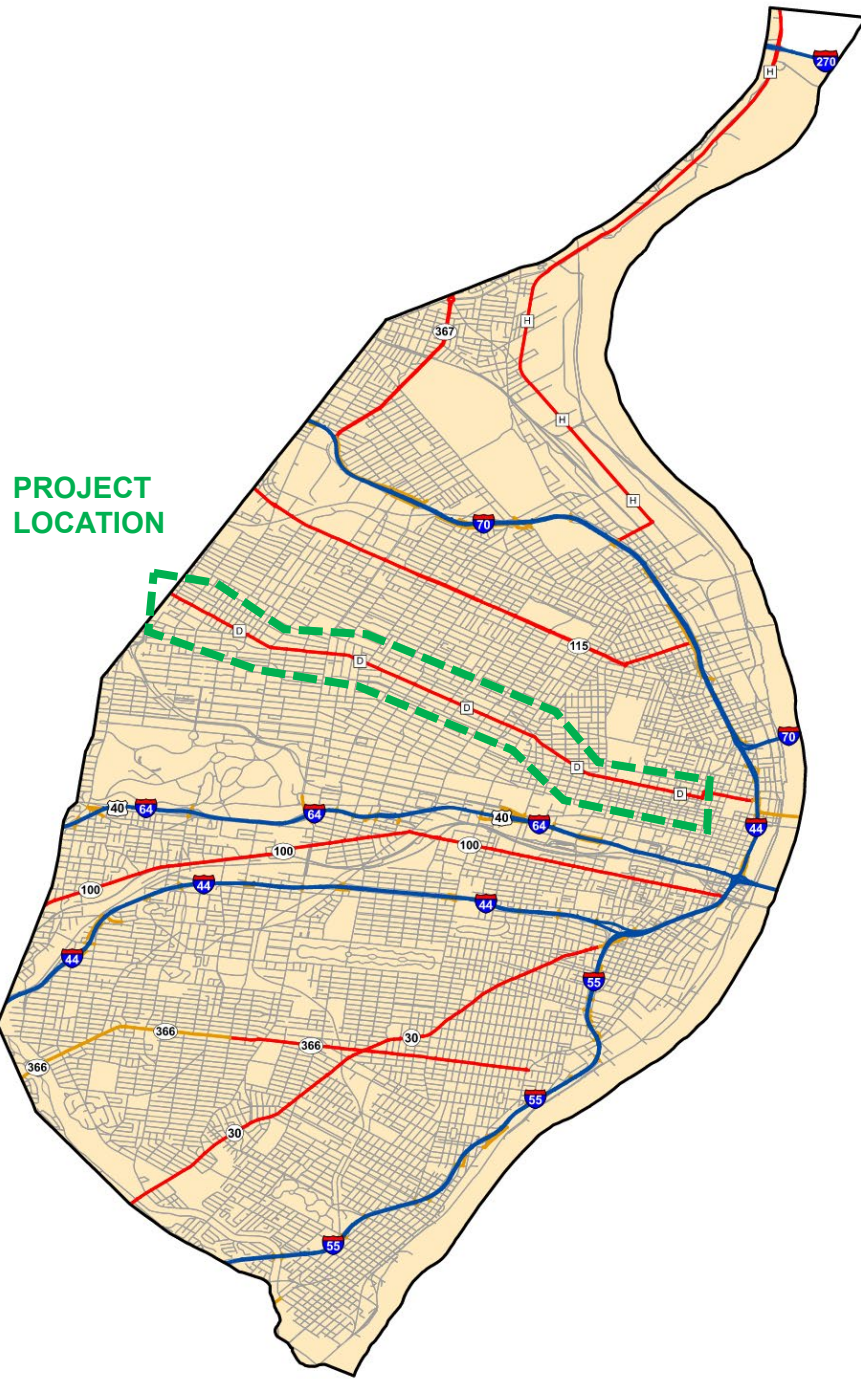
3. Review, analyze, & document findings
4. Present findings to MoDOT & team

Project Area Overview

ST LOUIS CITY, MISSOURI

- MoDOT jurisdiction limited to driving surface, signals, signs
- Length = 5.8 miles
- 4 to 2 lane undivided roadway with on street parking
- **Signalized intersections = 26**
- **Posted speeds = 30-35 MPH**
- Curb to Curb width = 48' - 60'

PROJECT
LOCATION





Community Overview

- Residential with street parking
- Light commercial & light industrial
- Decrease in population



Neighborhoods

- 5 Alderperson Districts (2021)
- 9 main neighborhoods



Crash Data 2017-2021

- **6X STATEWIDE 2020 & 2021 CRASH RATES**
- 1696 – total crashes
- 10 - Fatal crashes
- 53 – Serious Injury Crashes

- 33 – Total pedestrian related crashes
- 4 – Fatal pedestrian crashes



Typical Public Meetings

Engineer: Do You Know What Your Problem Is?

Let me Tell You.

Public: That's not my main problem.

Engineer: We already designed a great solution to your problem.

Public: That's not the right problem or the right solution.

Engineer: Well, we are done now.

Public: Engineers do not listen.





Route D Process

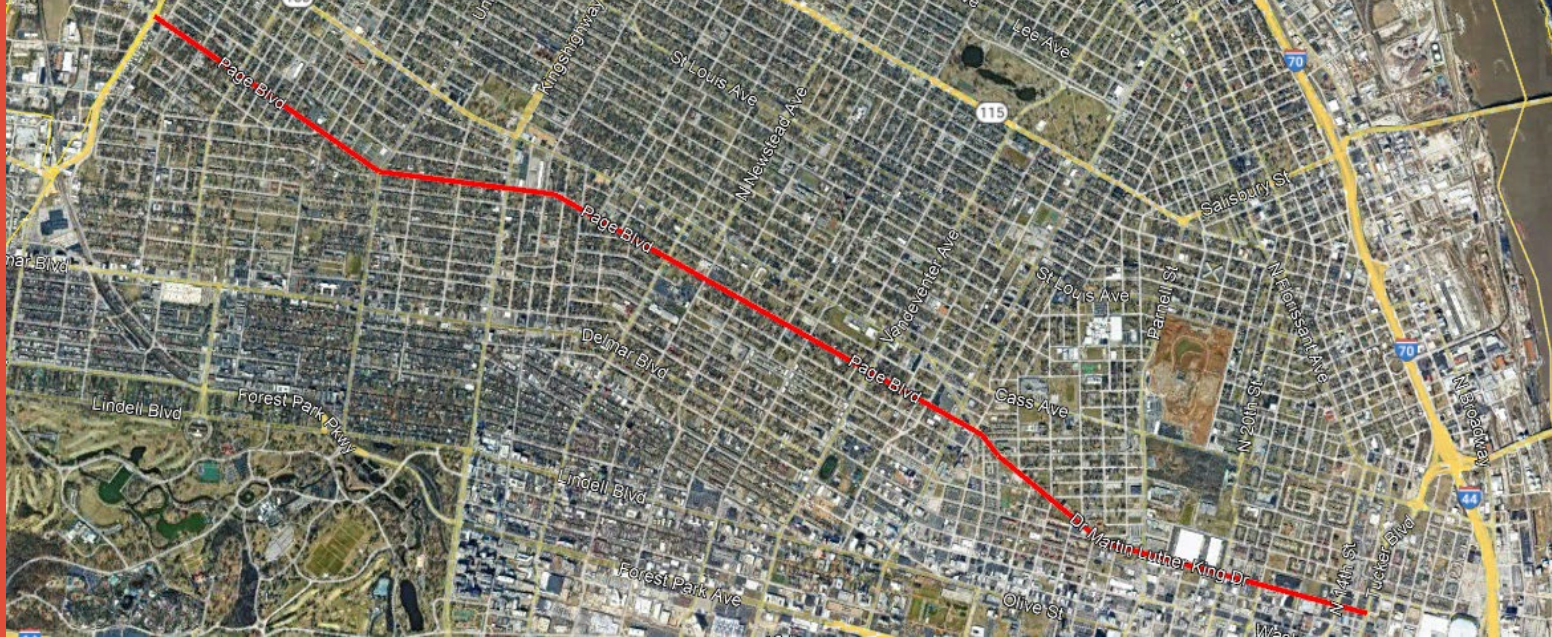
- Table reviews of existing conditions data
- **Develop Public Involvement Plan**
- **Corridor Walk Audit**
 - Pre-Audit Data Conditions Meeting
 - Post-Audit Recap Meeting
- **Public Engagement**
 - Focus Group
 - Public Meeting
 - Temporary Safety Demonstration
 - Focus Group
- Analyze findings & Develop Suggested Countermeasures
- Document & Present RSA findings

Top Concerns (Engineers)

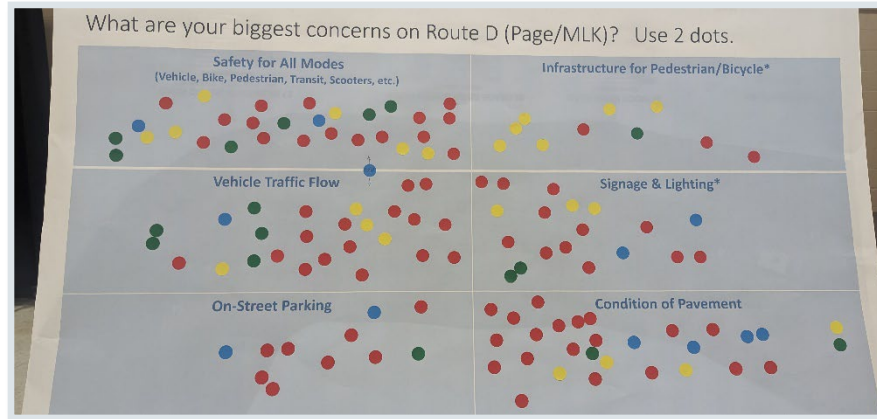
1. High crash rates
2. Condition of MoDOT infrastructure
3. Level of Service along corridor
4. Traffic and pedestrian signal operations
5. Vertical and Horizontal Curves
6. Signage visibility and frequency



Public Engagement



Focus Groups



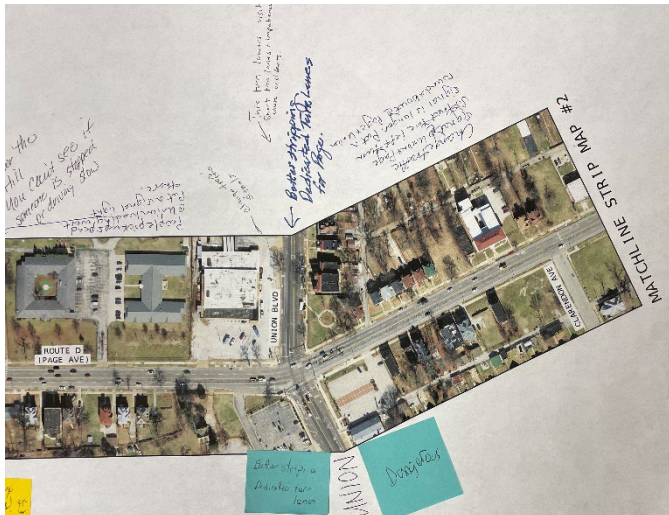
Public Meeting Open House



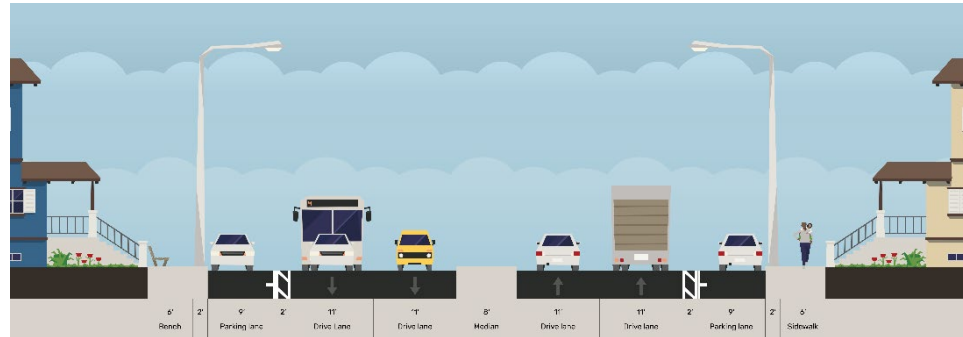
Temporary Demonstration

FOCUS GROUPS

Invite the public into the process



1. "What info or issues are we missing?"



2. "What do you think about these general options?"



3. "Do these options match these locations?"

Public Meetings

Various Formats
to Collect Input

Fact Sheet

SKINKER/KIENLAN TO TUCKER IN THE CITY OF ST. LOUIS ROUTE D (PAGE & MLK) ROAD SAFETY AUDIT

The Missouri Department of Transportation is conducting a Road Safety Audit of Rte. D (Page & MLK) in the City of St. Louis to address safety concerns for all users.

The project area extends 5.8 miles along Page Avenue between Skinker on the west and Dr. Martin Luther King Drive, then on Dr. Martin Luther King Drive to Tucker Boulevard on the east.

SEEKING A SAFER ROUTE D (PAGE & MLK)

Crash rates in the project area exceed the statewide average for similar roadways and include 10 fatal crashes in the last five years.



- The project will:
1. Document and assess existing traffic trends and roadway conditions.
 2. Evaluate improvement alternatives to enhance safety for all roadway users.
 3. Work collaboratively with the community to develop context-sensitive, community-supported designs that address community issues and needs.

SCHEDULE

The Road Safety Audit will be developed through collaborative and inclusive engagement with the public. Several opportunities for engagement are planned.

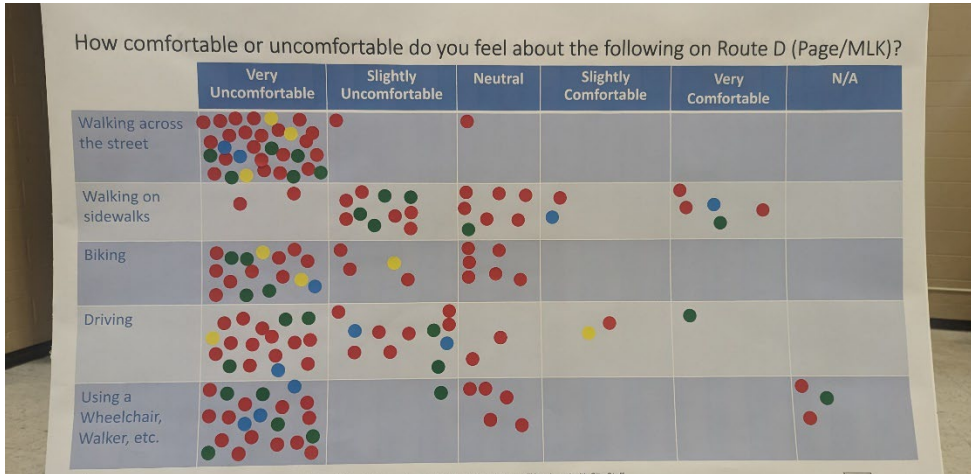
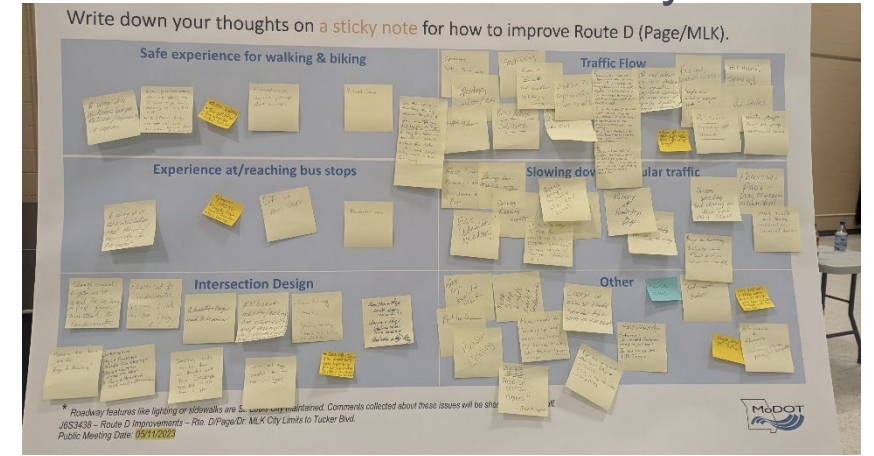
- SPRING 2023**
Community Meeting #1: Understand Community Concerns
- SUMMER 2023**
Pop-Up Demonstrations: Test Proposed Solutions
- LATE-SUMMER 2023**
Community Meeting #2: Draft Recommendations
- WINTER/SPRING 2024**
Community Meeting #3: Final Recommendations
- 2026 (ANTICIPATED)**
Construction of Road Resurfacing Project



Maps



Comment Sticky Notes



Dot Voting Questions

Temporary Safety Demonstration

- Introduce possible improvements
 - Engage wider audience
- Announce future construction project



During Rush Hour



Generate Media Coverage



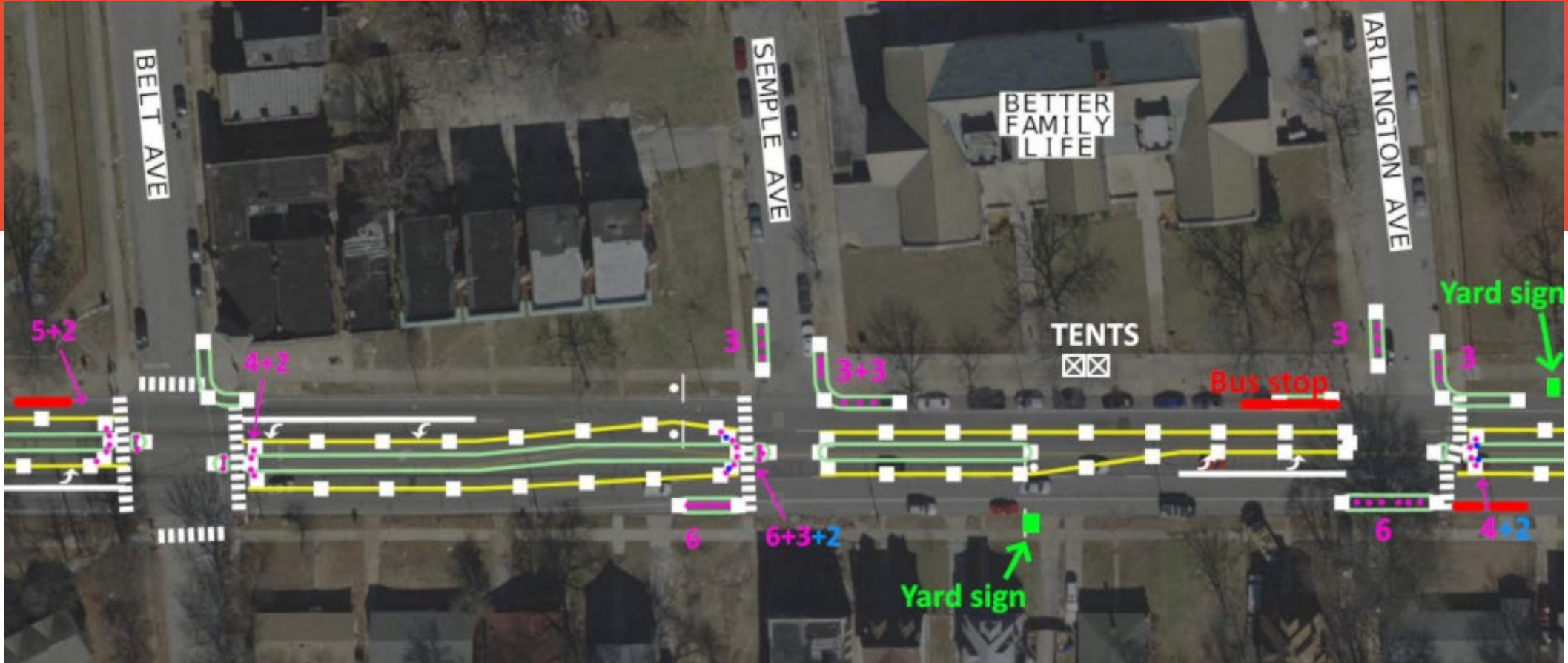
Memorable



Build Partnerships

Temporary Safety Demonstration

Layout



Top Concerns (Engineers)

1. High crash rates
2. Condition of MoDOT infrastructure
3. Level of Service along corridor
4. Traffic and pedestrian signal operations
5. Vertical and Horizontal Curves
6. Signage visibility and frequency



Top Concerns (Public)

1. **Speeding and aggressive driving**
 - A. Signal & intersection violations
 - B. Parked car crashes
 - C. Improper & dangerous lane use
2. **Poor condition of pavement**
 - A. Condition of streets and sidewalks
 - B. Appearance of neighborhood
3. **Traffic signal timing**
 - A. Long green lights for east-west Route D traffic
 - B. Lack of dedicated left turn movements
4. **Lack of safety of kids, pedestrians, transit, and wheelchair users**
 - A. Poor condition of sidewalks and crossings
 - B. Unsafe and unusable bicycle conditions sentiment



WHEN TO CONSIDER PUBLIC ENGAGEMENT IN AN RSA?

- HIGH SAFETY NEEDS
- HIGH CHANGES EXPECTED BY PUBLIC
- HIGH LOCAL RESISTANCE TO MODOT
- COMMUTER VS RESIDENTIAL PERSPECTIVE



HOW DOES IT IMPACT THE SCHEDULE?

ADDING MORE PUBLIC INPUT EXTENDS THE RSA PROCESS

Intersection
Vs
Corridor

Extent
of Suggested
Improvements

Type
&
Number of
Public Events

RSA
Vs
Concept
Report

QUESTIONS?



Project Team

