



2023 TEAM Conference

March 17, 2023

Laurel McKean, PE
Project Director
MoDOT

Tyson Stein, PE, SE
Structures Lead
Parsons

Design-Build Project Team

MoDOT (Owner)

- TREKK (Owner Engineer)

Emery Sapp & Sons (Contractor)

Parsons (Lead Designer)

- Terracon
- Civil Design, Inc.



Purpose

The purpose and need of the I-44 Corridor Bridge Bundle (I-44 CBB) Design-Build Project is to replace or rehabilitate poor and fair condition rated bridges along and within 15 miles of Interstate 44 across the Southwest District.



Goals

1. Deliver a safe project within the programmed budget of \$43.174 million
2. Maximize the number of locations to be addressed while providing quality structures
3. Use innovation to reduce delay and minimize impacts to the public
4. Deliver the Project using a diverse workforce
5. Complete the Project on or before November 1, 2024



Request for Proposal

Bridges are experiencing deterioration and require increasing maintenance to keep them safe for travel.

16 Mandatory Bridges:

- Nine (9) Bridge Replacements (5 on I-44)
- Six (6) Bridge Replacements or Rehabilitations (2 on I-44)
- One (1) Bridge Rehabilitation

16 Secondary Bridges:

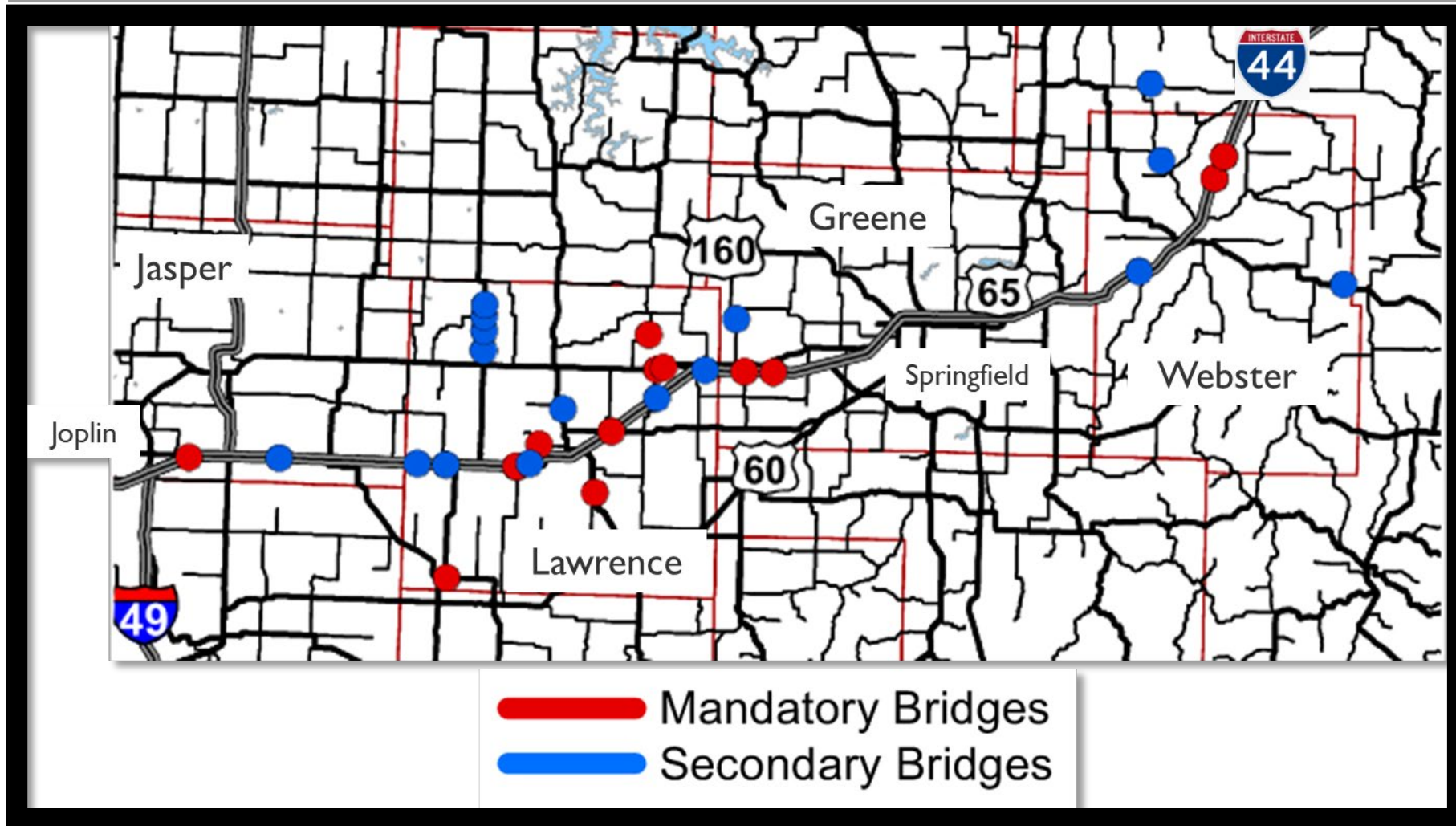
- 14 Bridge Replacements
- Two (2) Bridge Replacements or Rehabilitations

Maintain two lanes of traffic in each direction on I-44 where the mainline bridge is being replaced, redecked, or the superstructure replaced (except for short-term lane closures).

Utilize Dynamic Late Merge/Zipper Merge system on I-44 where the mainline bridge is being rehabilitated.

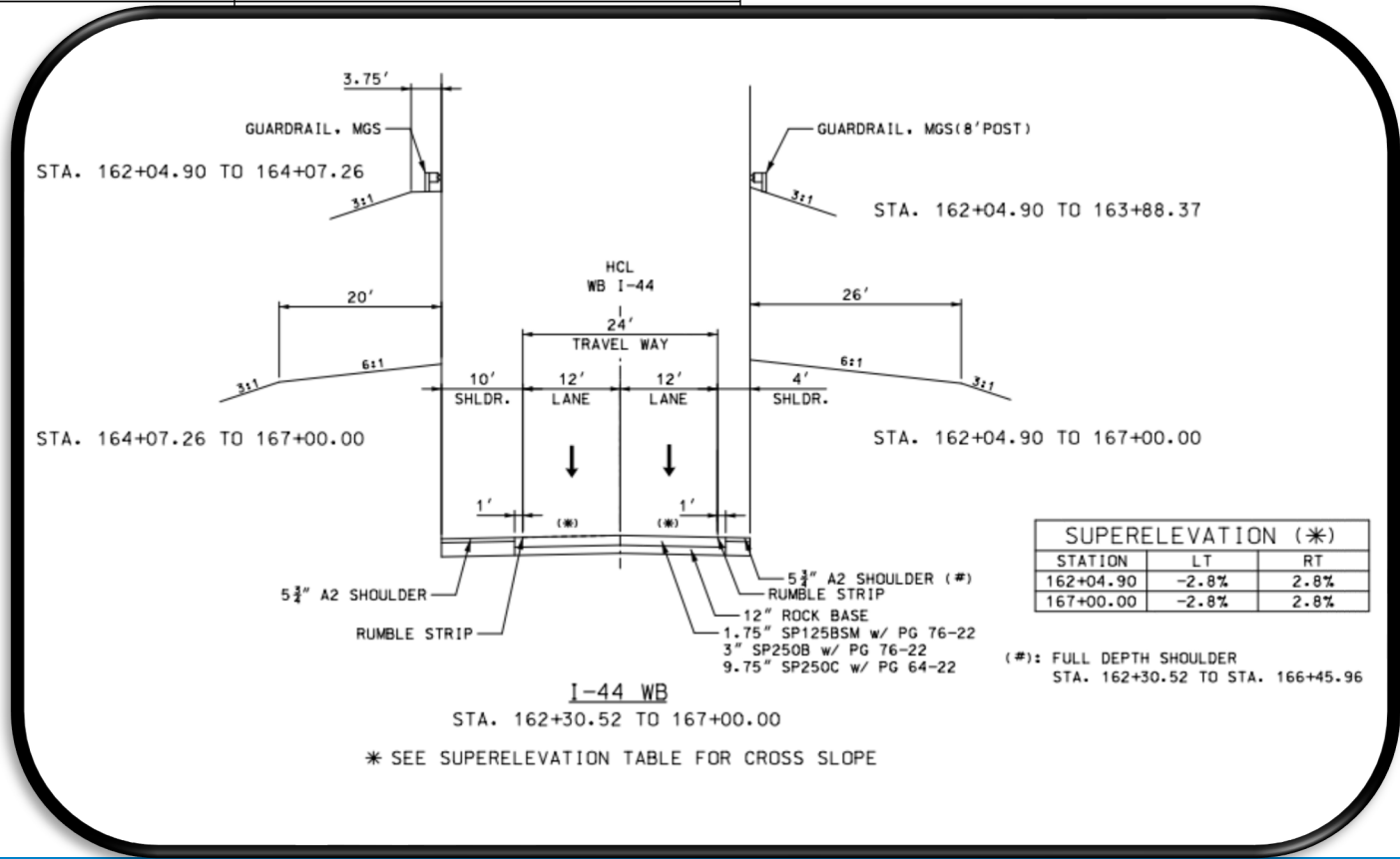


I44 Corridor Bridge Bundle



I-44 Corridor Bridge Bundle Design Criteria

Location	Major or Minor	Lane Width*	Acceleration and Deceleration Lane Width	Normal Shoulder Width
Existing I-44 (Each Direction)	Major	2-12'	12'	10' Outside 4' Inside 6' Adjacent to Acceleration and Deceleration Lanes



ESS Team Proposal

Improve 25 bridges at various locations in Jasper, Lawrence, Greene, Webster and Dallas counties

- 12 Multi-Girder Bridge Replacements
- Four (4) Culvert Replacements
- Six (6) Superstructure Replacements
- Three (3) Bridge Rehabilitations

Impact seven (7) bridges on I-44, five (5) over I-44, and 13 on other state routes within 15 miles of I-44.

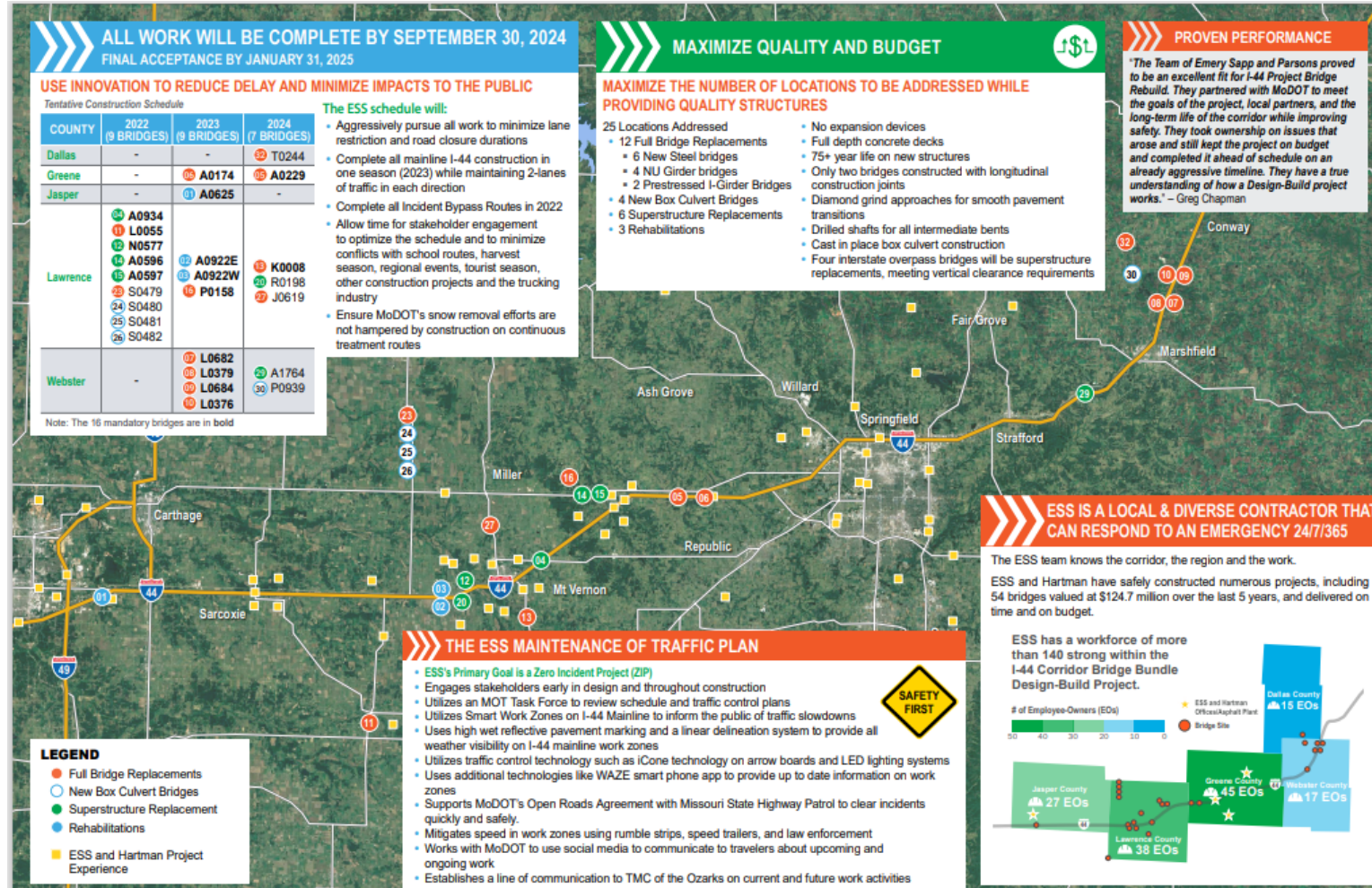
Traffic Impacts:

- I-44 bridge replacements will maintain two lanes of traffic.
- I-44 bridge rehabs will utilize Zipper Merge.
- Most others have signed detours.

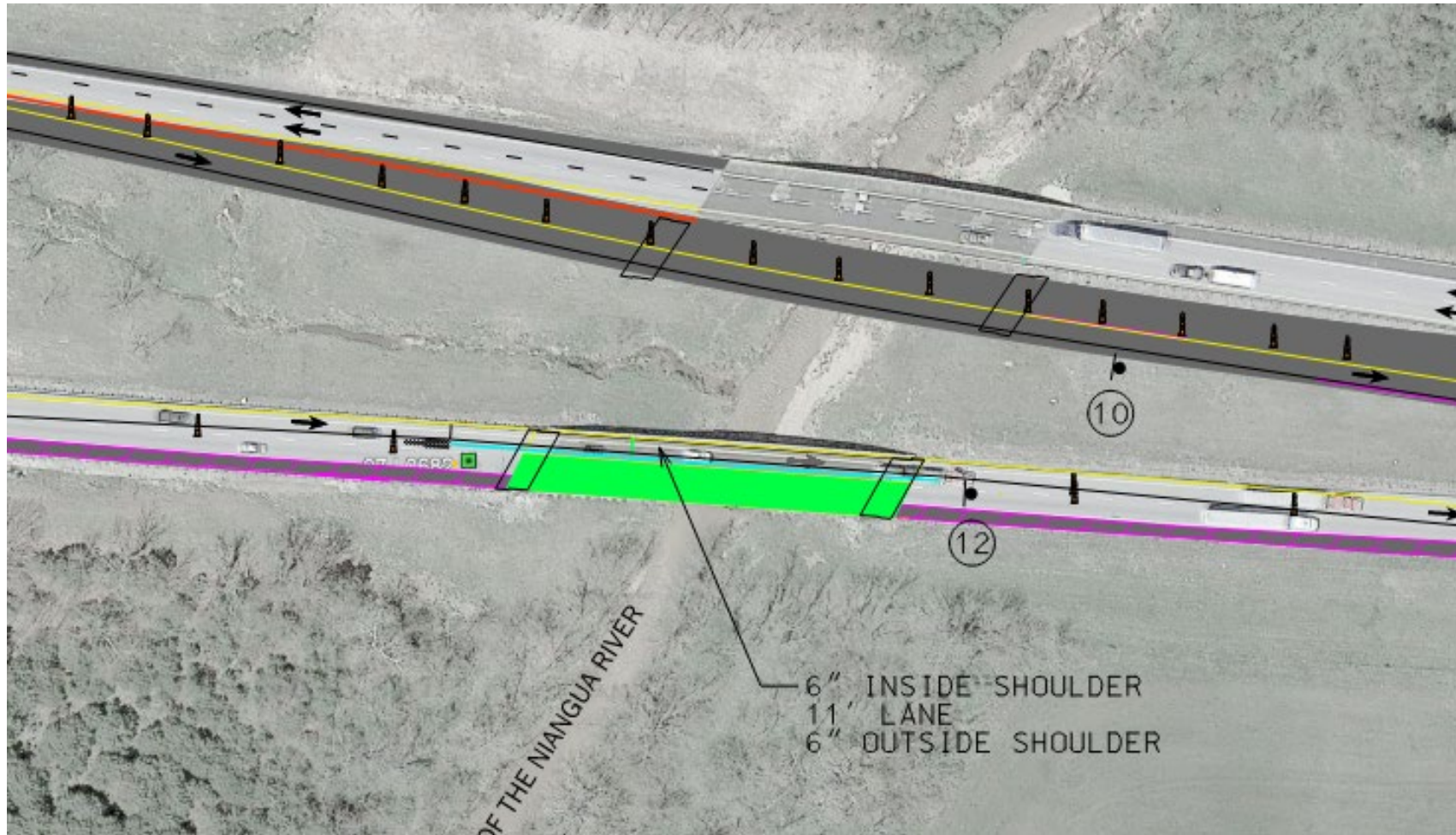
COUNTY	2022 (9 BRIDGES)	2023 (9 BRIDGES)	2024 (7 BRIDGES)
Dallas	-	-	32 T0244
Greene	-	06 A0174	05 A0229
Jasper	-	01 A0625	-
Lawrence	04 A0934		
	11 L0055		
	12 N0577		
	14 A0596	02 A0922E	13 K0008
	15 A0597	03 A0922W	20 P0198
	23 S0479	16 P0158	27 J0619
	24 S0480		
25 S0481			
26 S0482			
Webster	-	07 L0682 08 L0379 09 L0684 10 L0376	29 A1764 30 P0939

Note: The 16 mandatory bridges are in **bold**

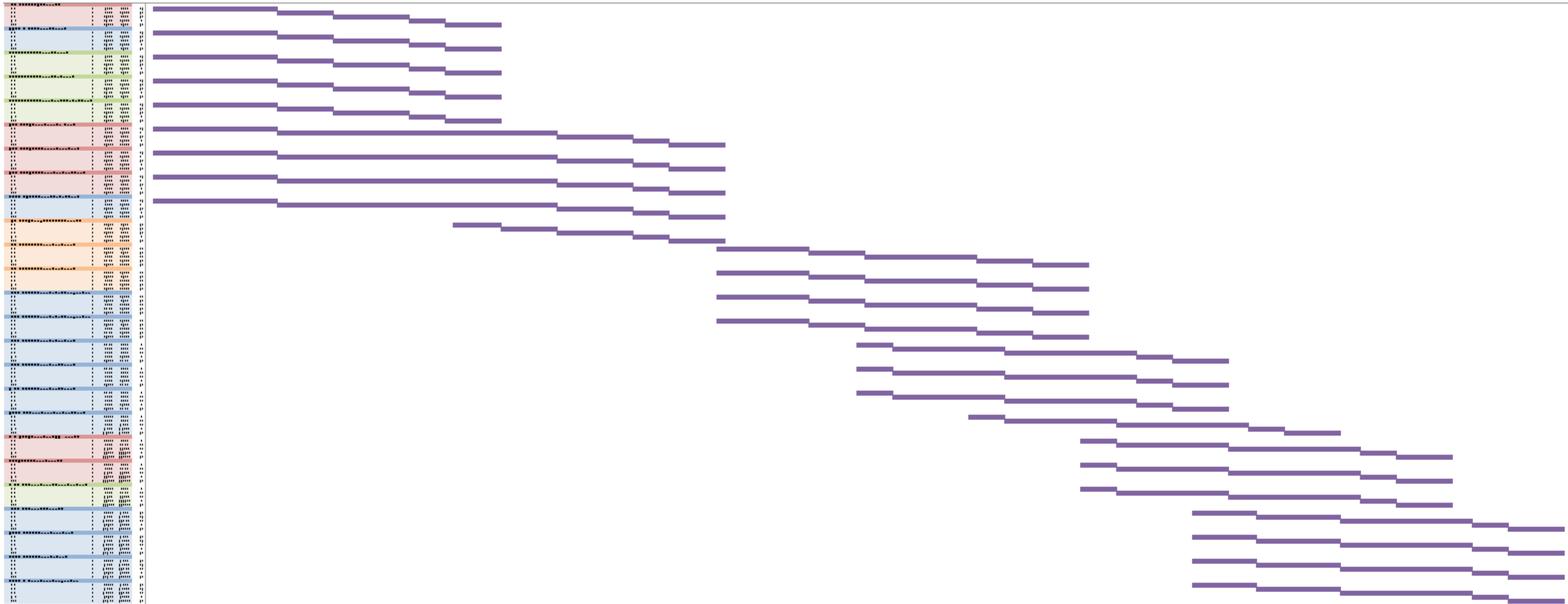
ESS Team Proposal



I-44 over East Fork of the Niangua River



Accelerated Schedule



Design Update

Multi-Girder Bridge Replacements

- 10 Released for Construction
- 2 at 90%

Superstructure Replacements

- 3 Released for Construction
- 1 Remaining

Box Culvert Replacements

- 3 Released for Construction
- 1 Remaining

Bridge Rehabilitations

- 3 Released for Construction
- 0 Remaining



Construction Update

Multi-Girder Bridge Replacements

- 2 Completed
- 3 Underway
- 7 Remaining

Superstructure Replacements

- 4 Completed
- 2 Remaining

Box Culvert Replacements

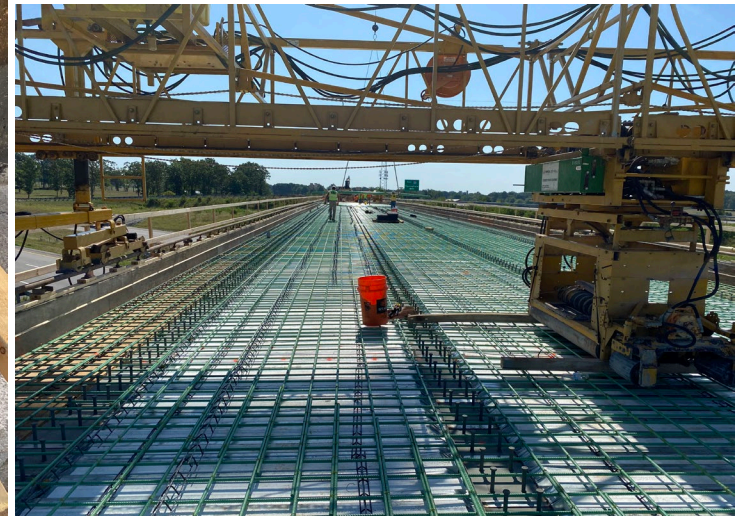
- 3 Completed
- 1 Remaining

Bridge Rehabilitations

- 2 Underway
- 1 Remaining



2022 Construction – Rt. 174 over I-44



2022 Construction – Rt. 174 over I-44



MO 174: Bridge Complete





MO 37: Before

MO 37: Construction





MO 37: Completion



MO 96: Construction



Rt. 96 – Previous Condition

Bent 3 Cap Replacement



MO 96: Construction





Route V: Before

MO V: Construction



MO V: Construction





MO 97



Bridge 24 (A9264)– MO 97 Over Dry Branch

- Box Culvert Replacement on Culvert Rated 5
- Widened
- First bridge in project



Bridge 25 (A9265) – MO 97 Over Wilder Branch



- Box Culvert Replacement on Culvert Rated 4
- Widened
- Wet Weather

Bridge 26 (A9266) – MO 97 Over S. White Oak Creek

- Box Culvert Replacement on Culvert Rated 5
- Widened



Bridge 23 (A9071) – MO 97 Over N. White Oak Creek

- Steel girder bridge replacement on existing one lane bridge rated 5-4-6
- Void in Shaft No. 5
- Shaft No. 5 & Shaft No. 7 drilled deeper
- Bridge in-progress



Bridge 23 (A9071) – MO 97 Over N. White Oak Creek



Bridge 23 (A9071) – MO 97 Over N. White Oak Creek



