



EXPERIENCE | Transportation

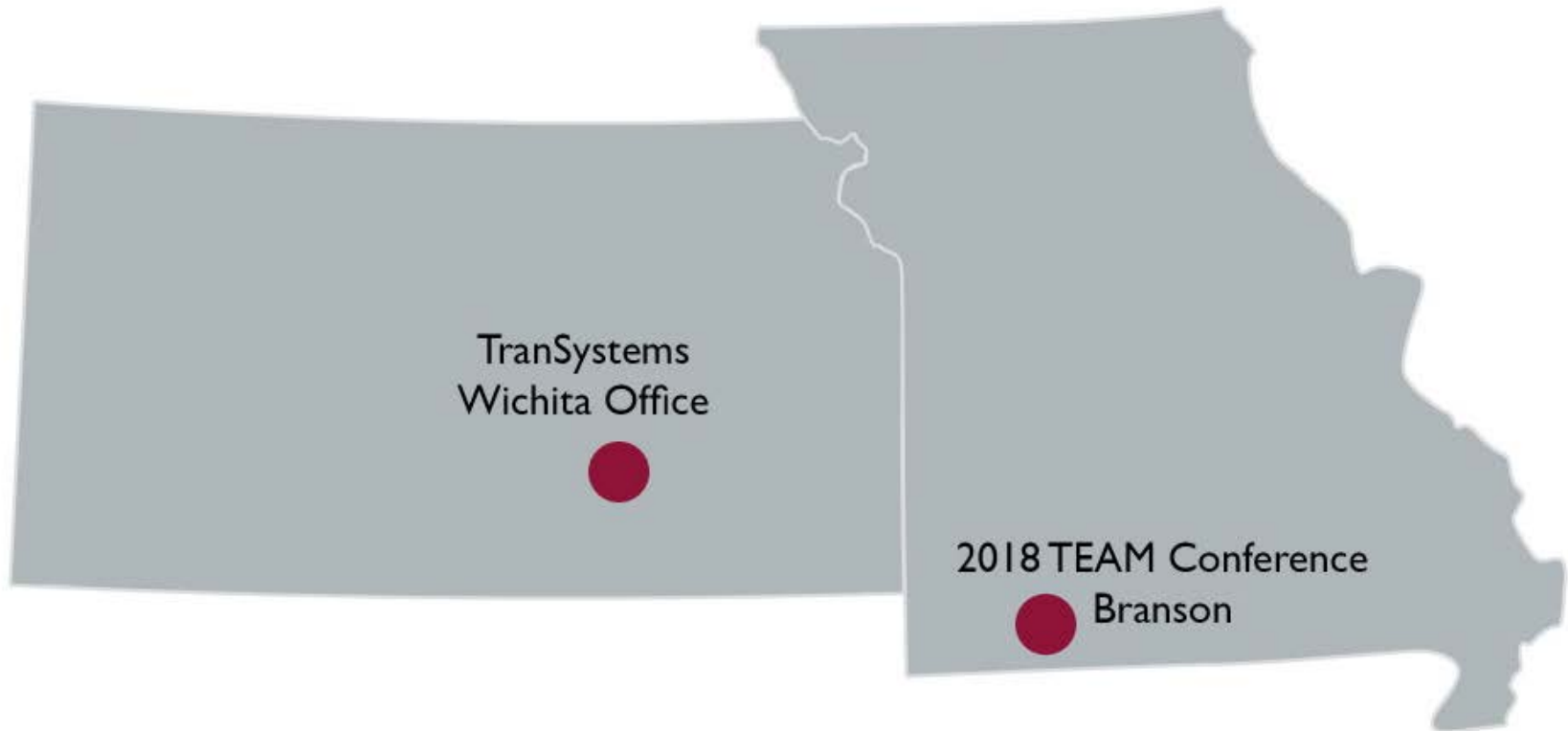


I-235/Kellogg Interchange Project

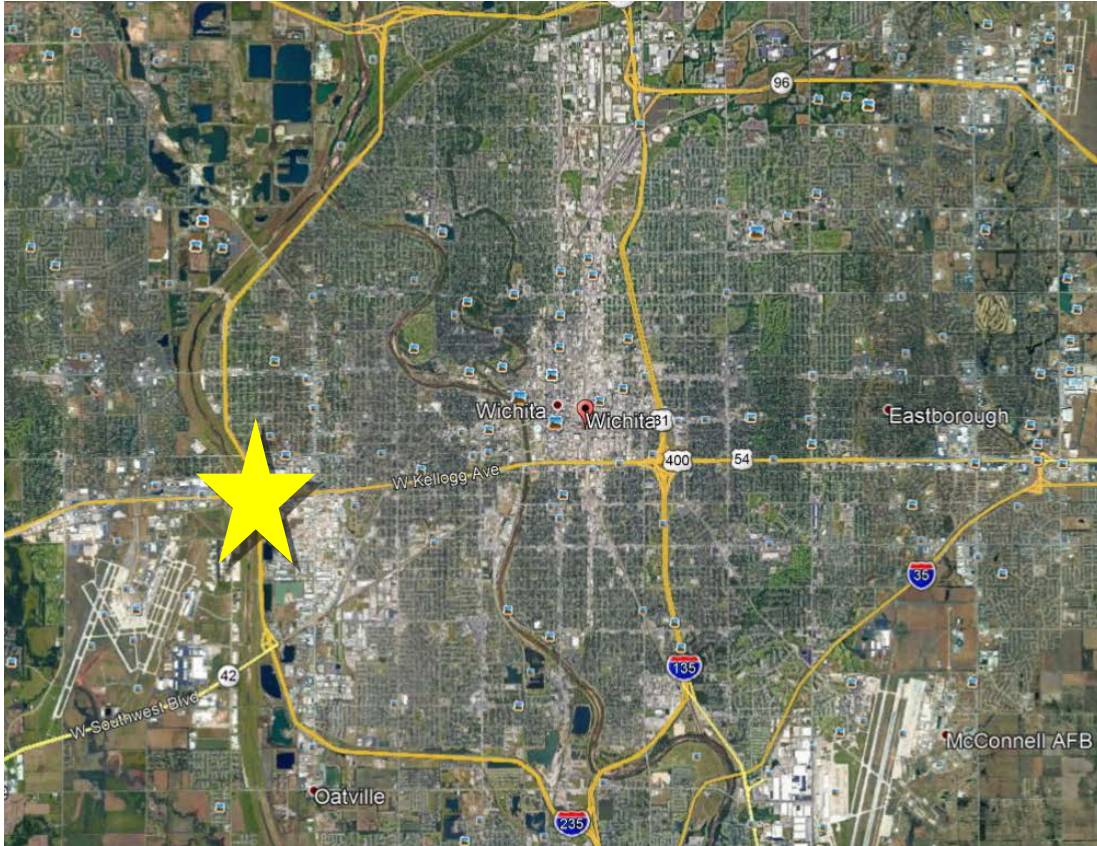
KDOT Project No. 235-87 KA-0161-04

Presented to:
TEAM Conference
March 8, 2018

Project Location



Project Location



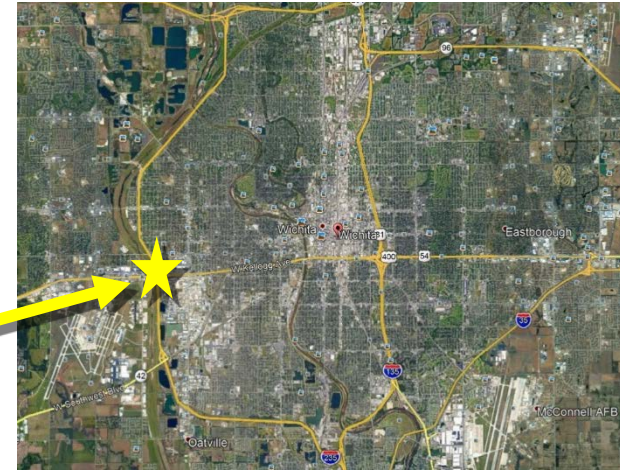
Wichita, Kansas

Largest City of Kansas

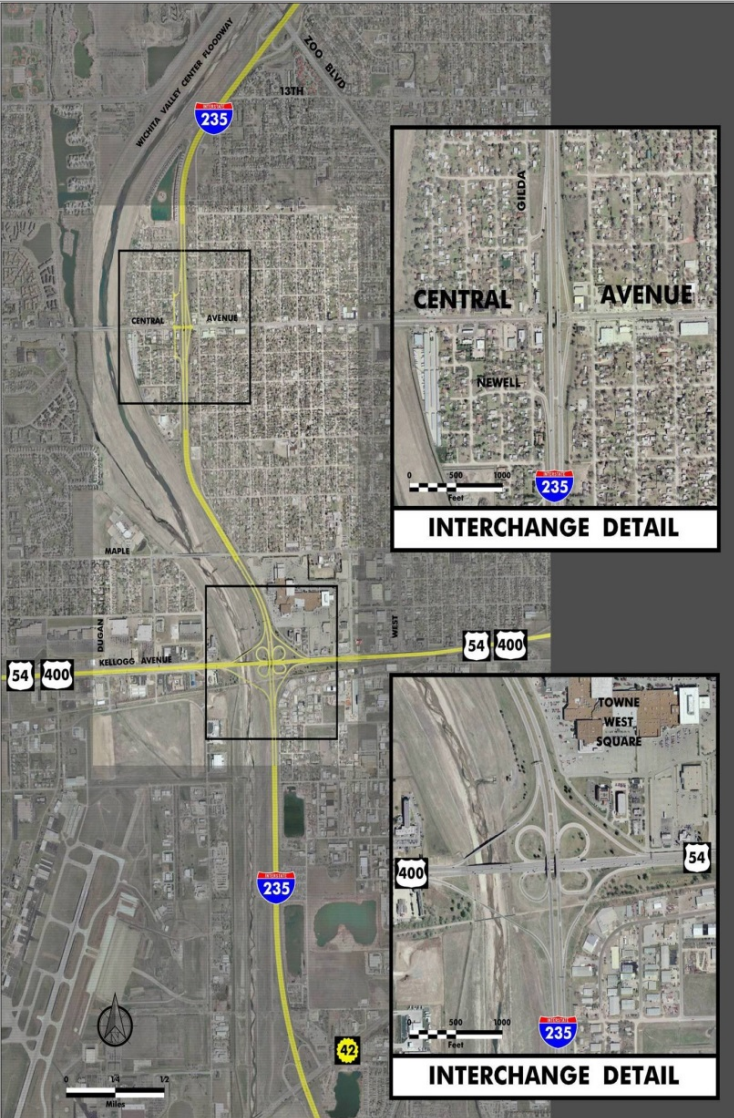
Population – 390,000

Sedgwick County

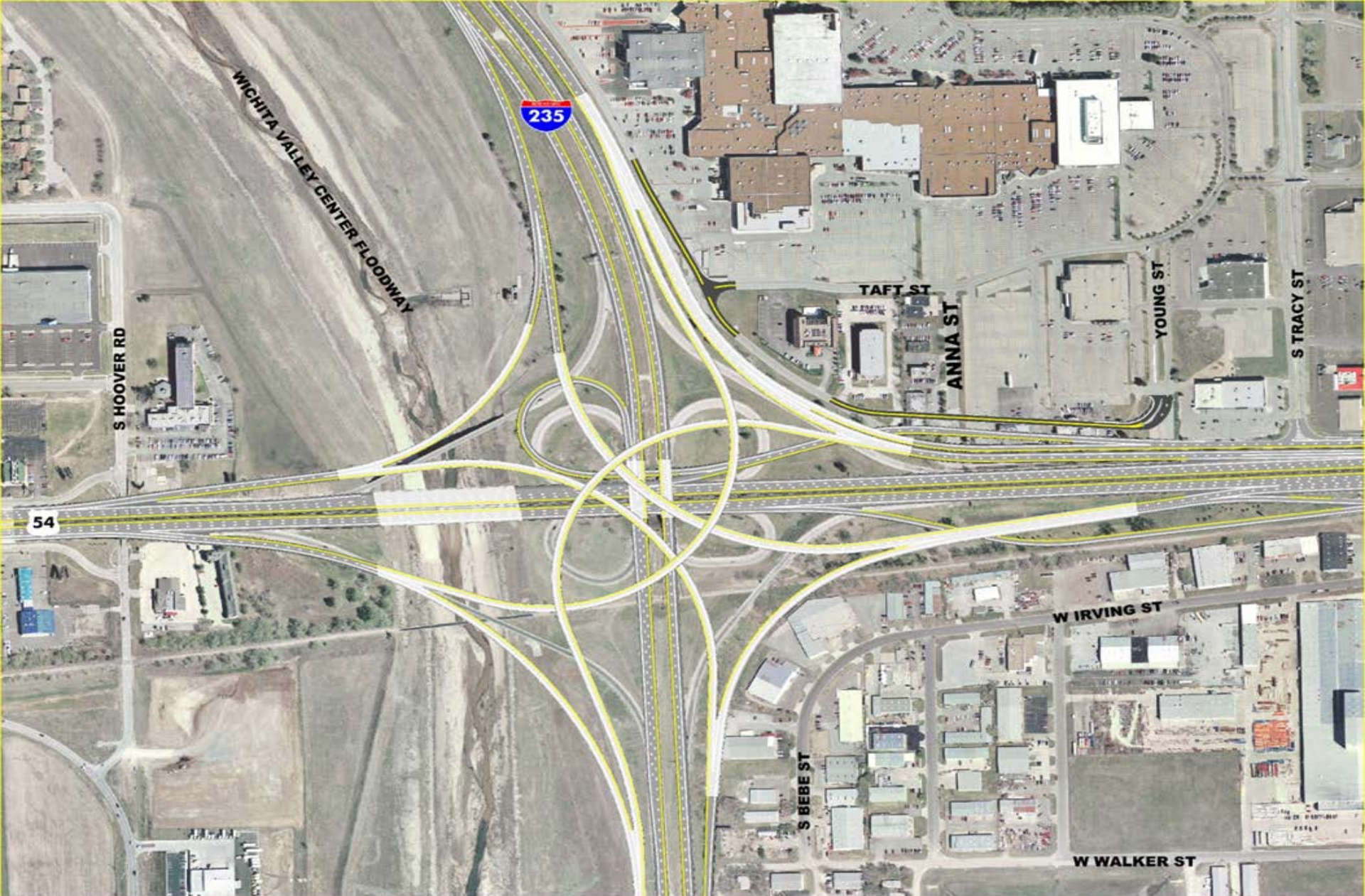
Our Project



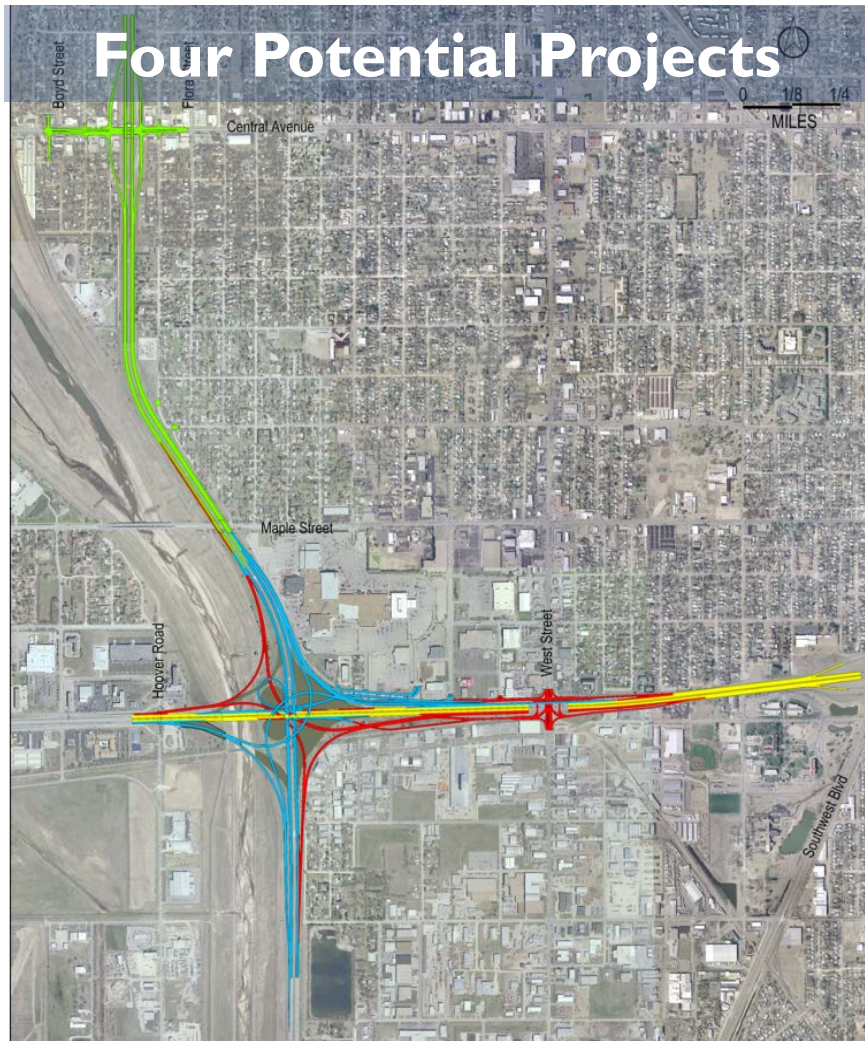
Existing Conditions



I-235/Kellogg Preferred Alternative



Ultimate Project Breakout



Ultimate Project Costs (Construction)

▶ **Project 1 (Red) \$108 M**

- T-WORKS \$116 M (FY 2016)
- includes \$11.7 M local

▶ **Project 2 (Blue) \$125 M**

▶ **Project 3 (Yellow) \$ 45 M**

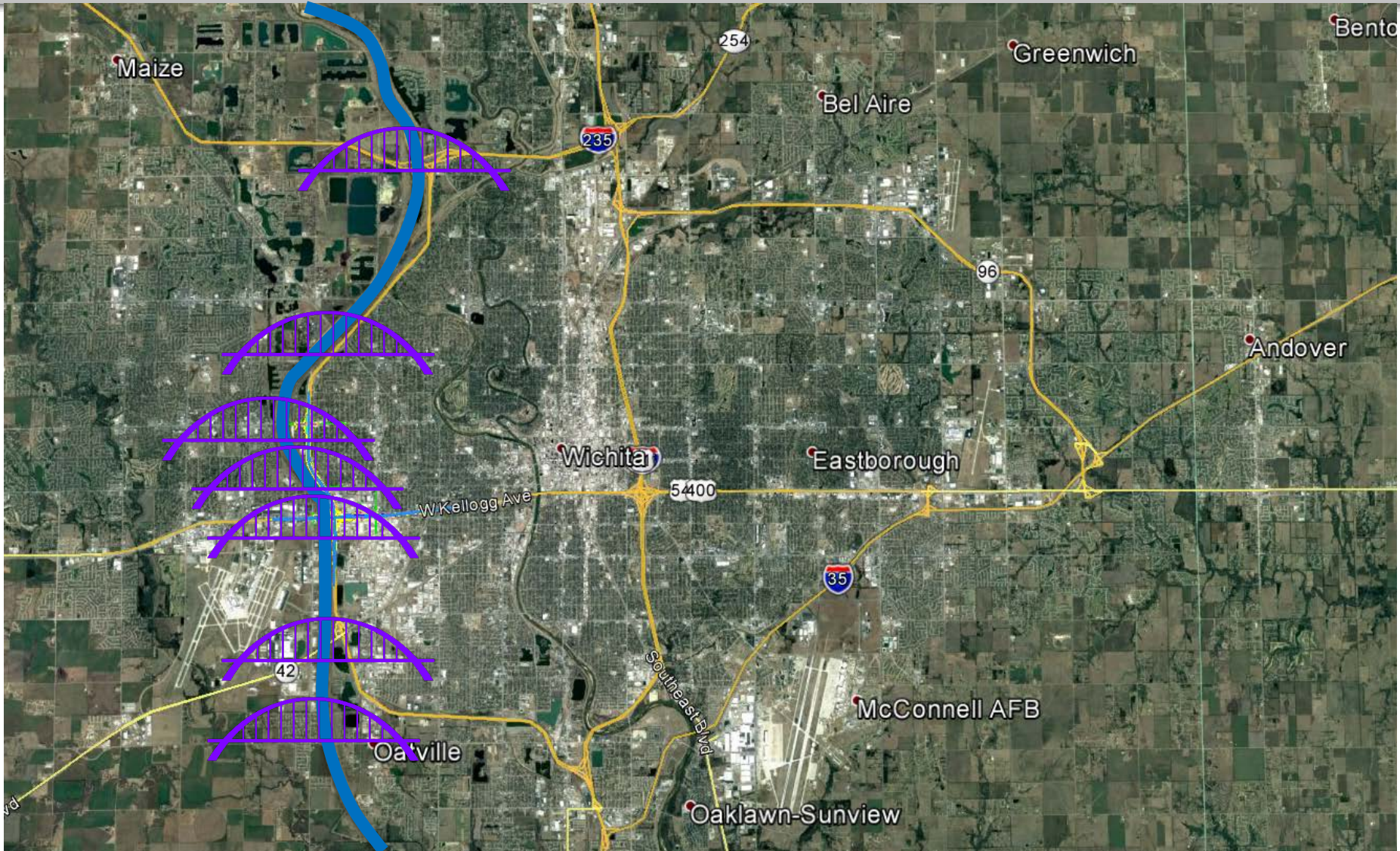
▶ **Project 4 (Green) \$ 72 M**

Total Est. Cost = \$350 M (FY 2016)

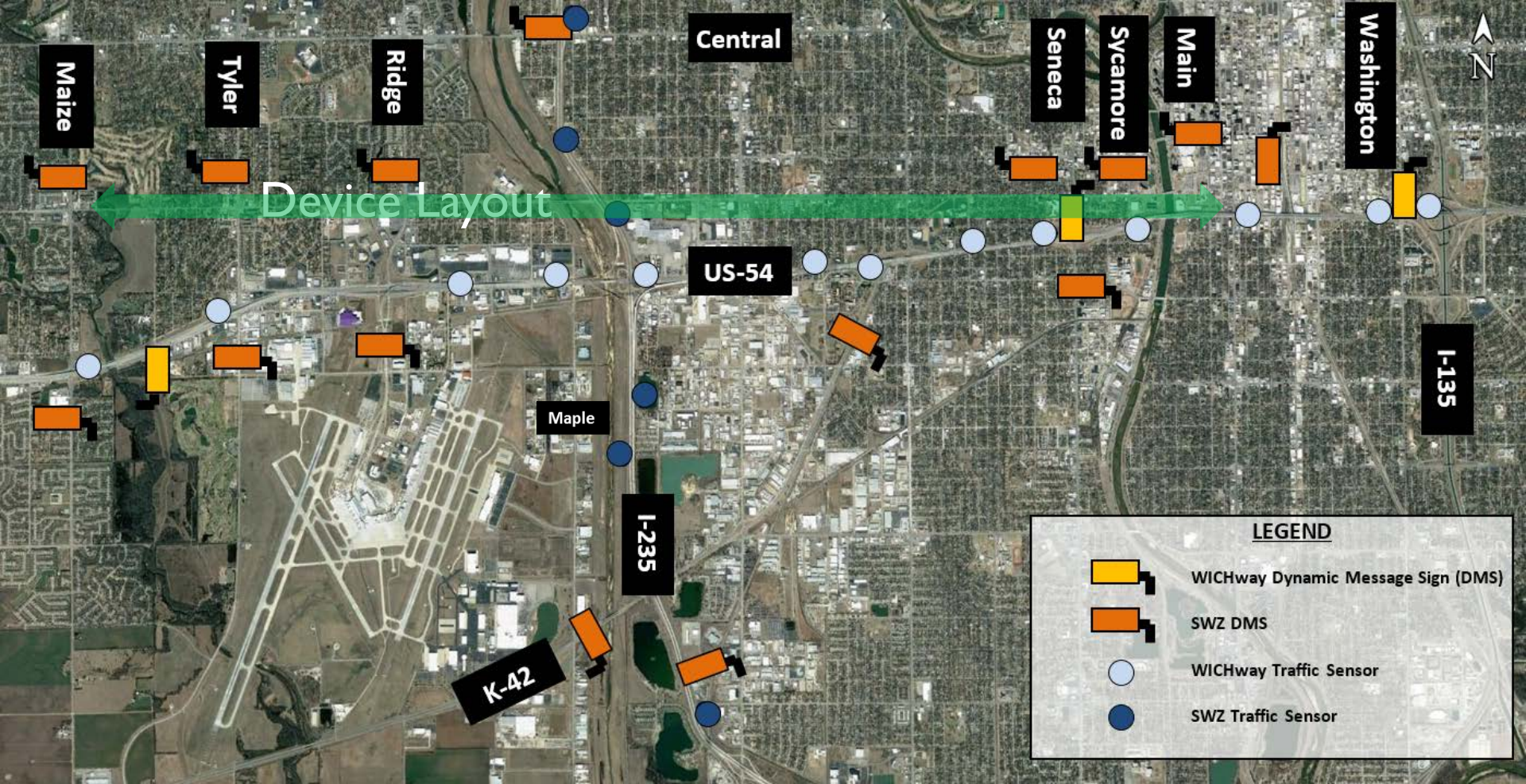
Project I – Red Project Limits



Wichita



I-235/Kellogg Interchange Project
March 8, 2018



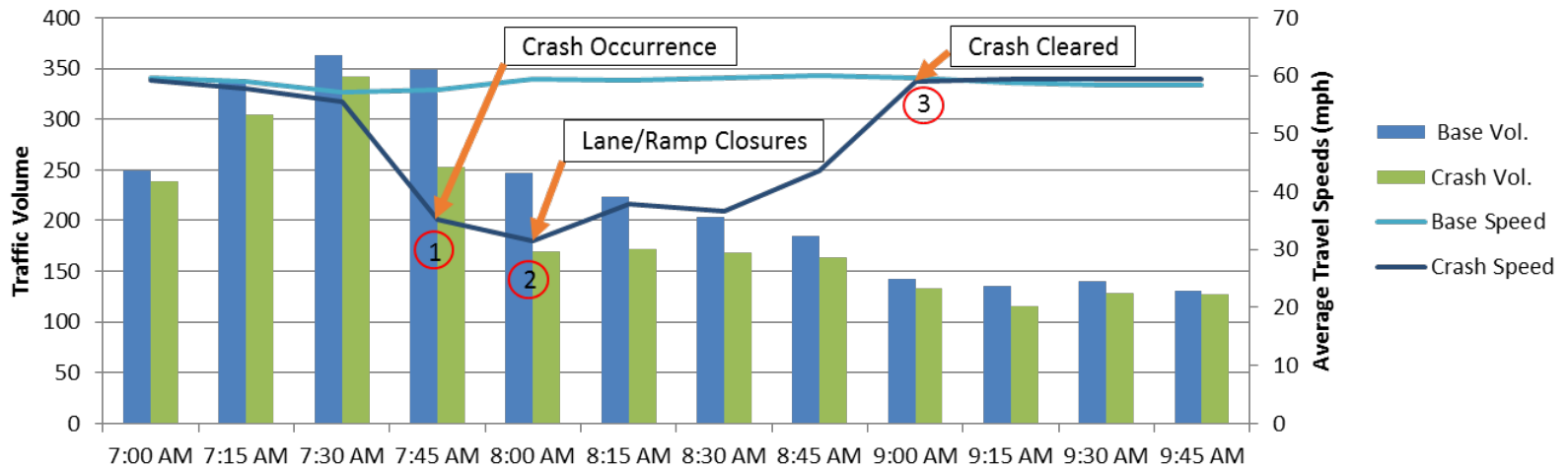
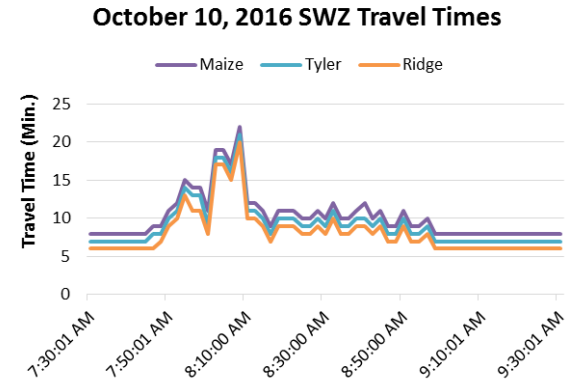
- ▶ **6 Portable Traffic Sensors**
- ▶ **15 Variable Message Signs**

WB US-54
TRAVEL
TIME

WATERWALK

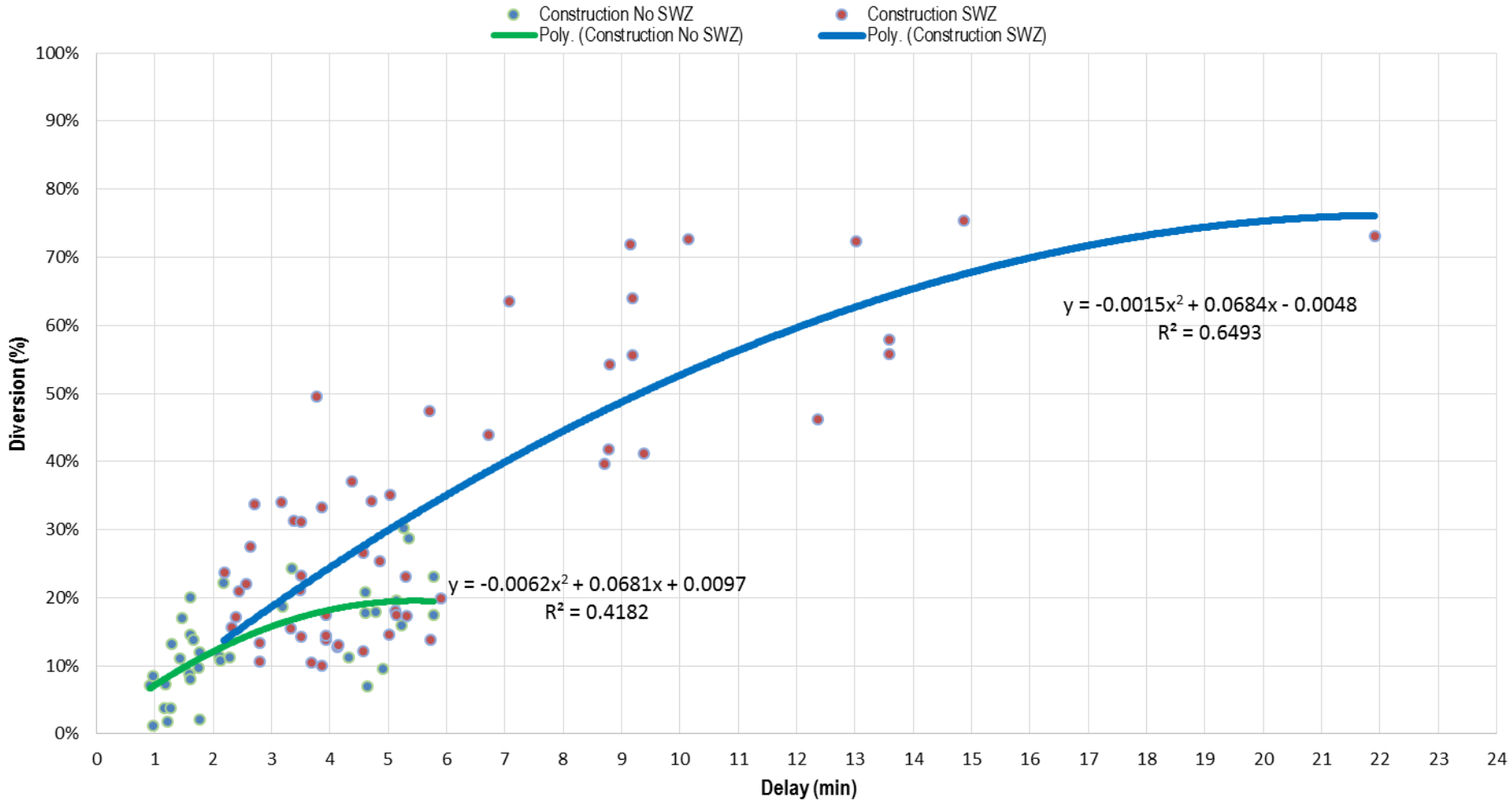


Traffic



Does it work?

Delay-Diversion Comparison: SWZ vs NO SWZ





Questions?

235red.org