

Route 65: THE REBUILD

Springfield, MO

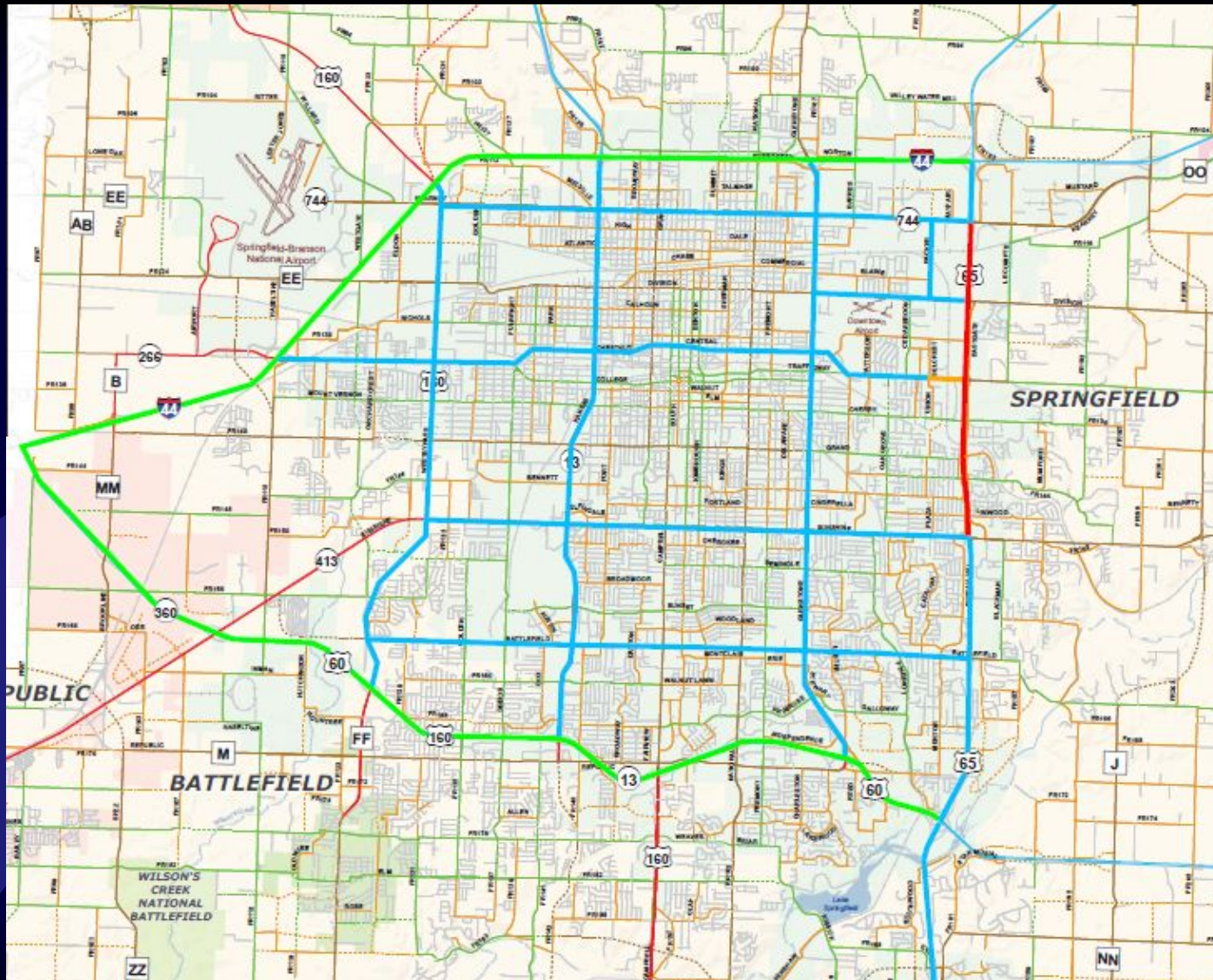


MILLSTONE
WEBER

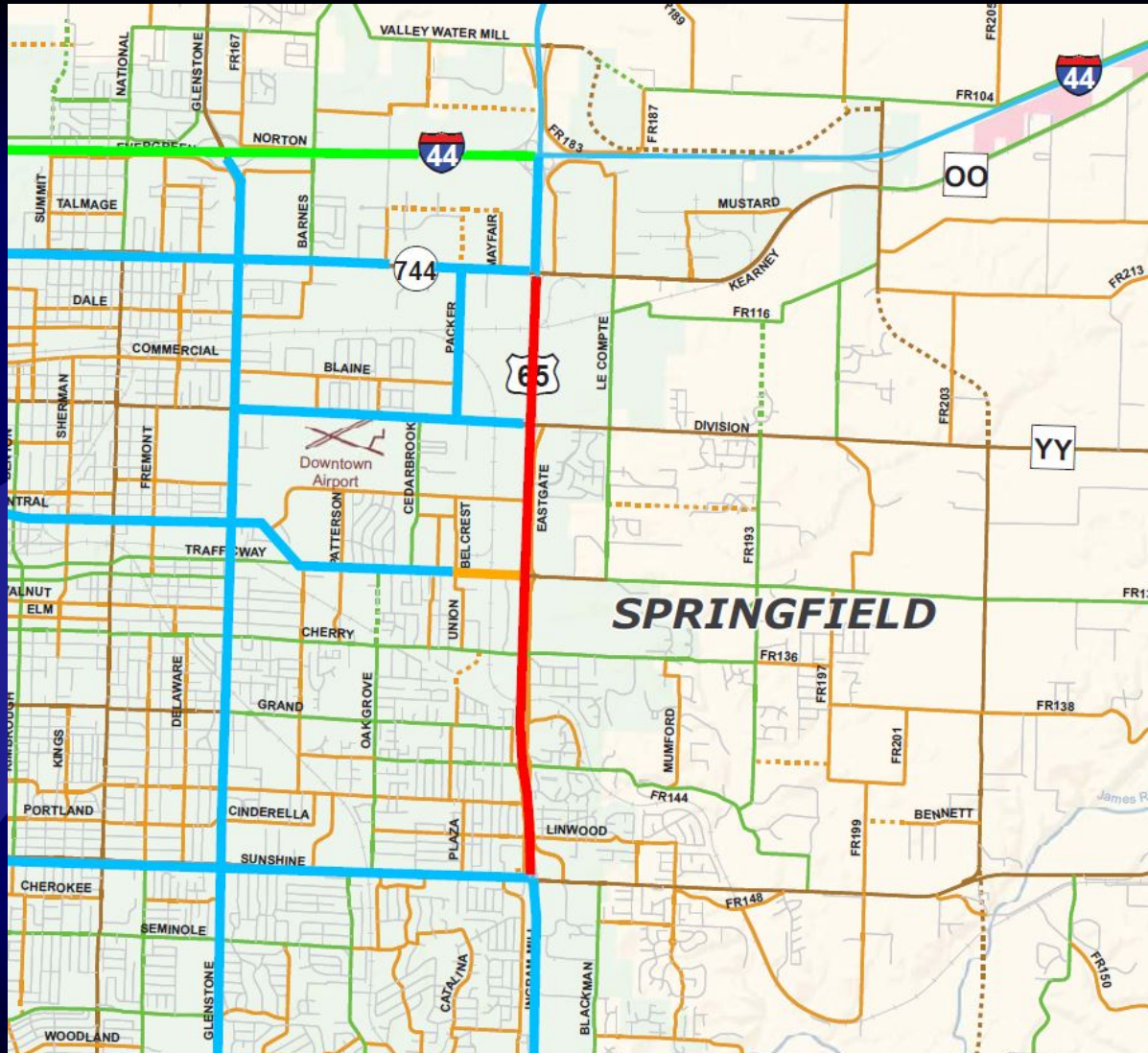


2018 TEAM CONFERENCE
BRAD GRIPKA - MoDOT

Route 65: THE REBUILD



Route 65: THE REBUILD



Original Pavement from early 1970s



Here's what we were dealing with



So what are the options?

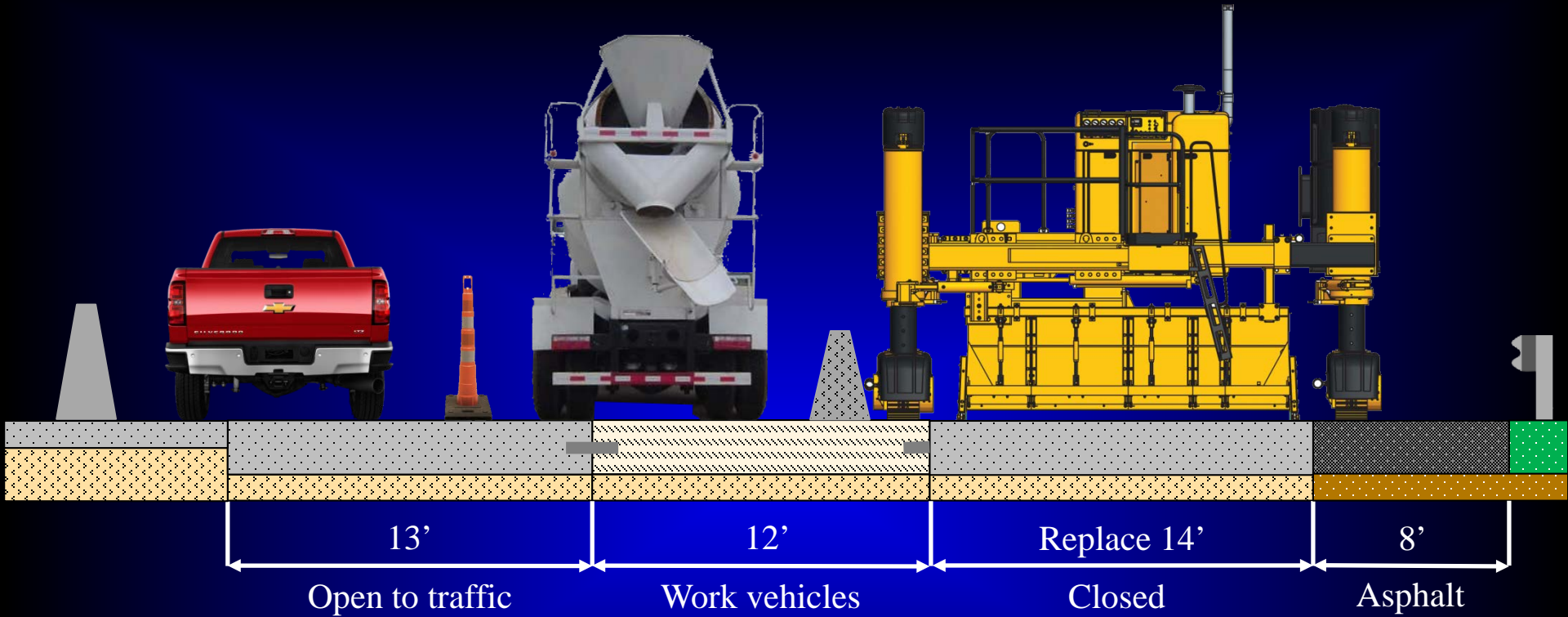
Asphalt Overlay?



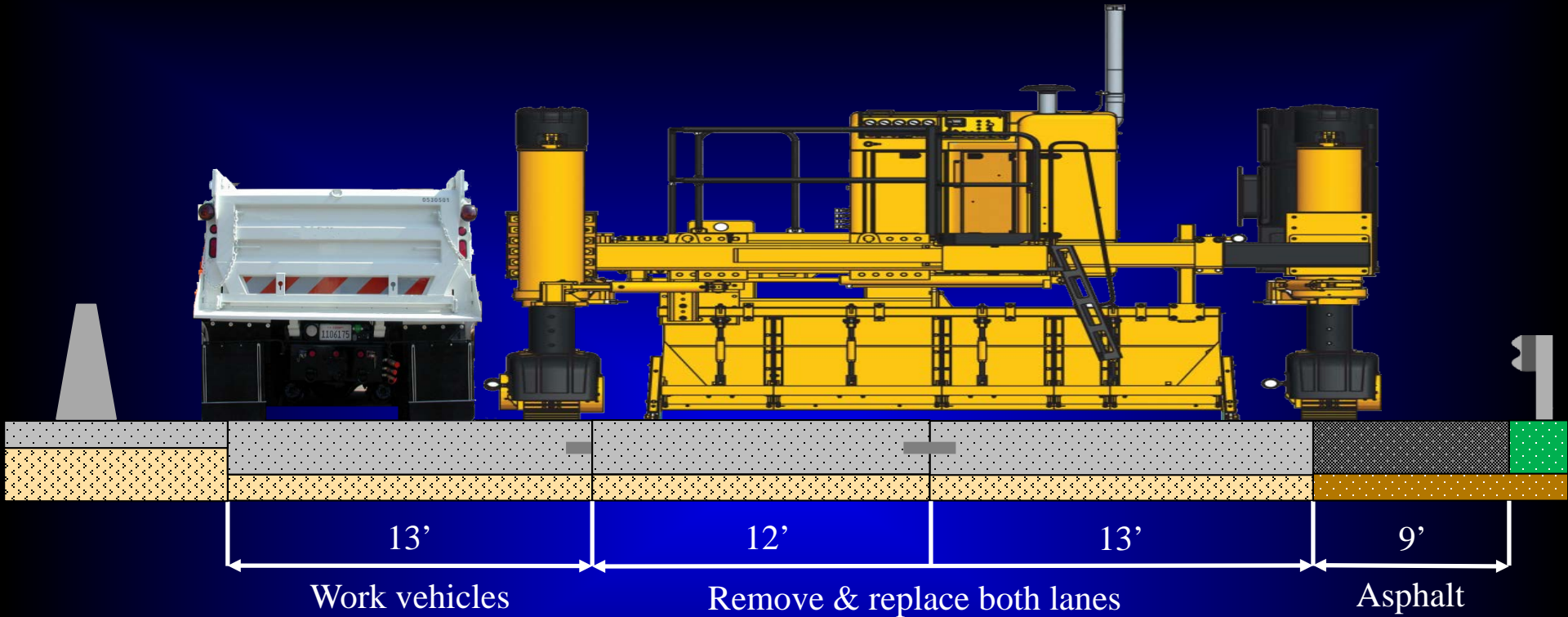
Concrete Pavement Repair?



Concrete Pavement Replacement with Barrier Wall?



Concrete Pavement Replacement With Full Closing?



Project Incentive

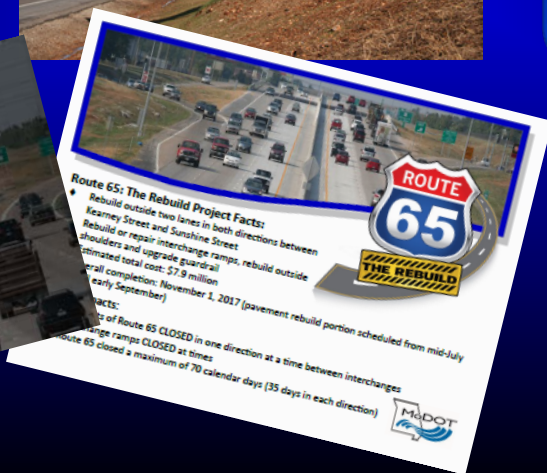
Contractor Incentive



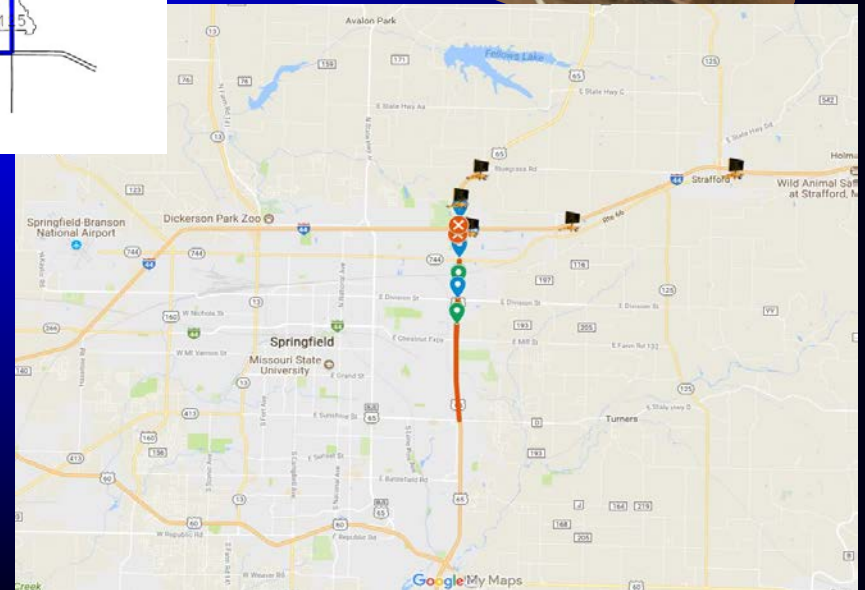
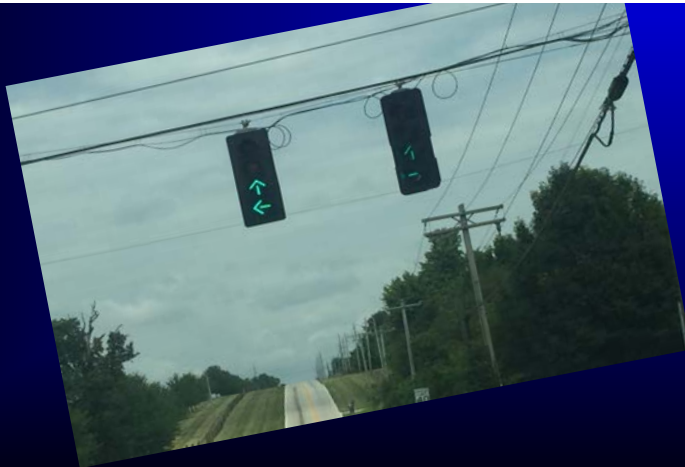
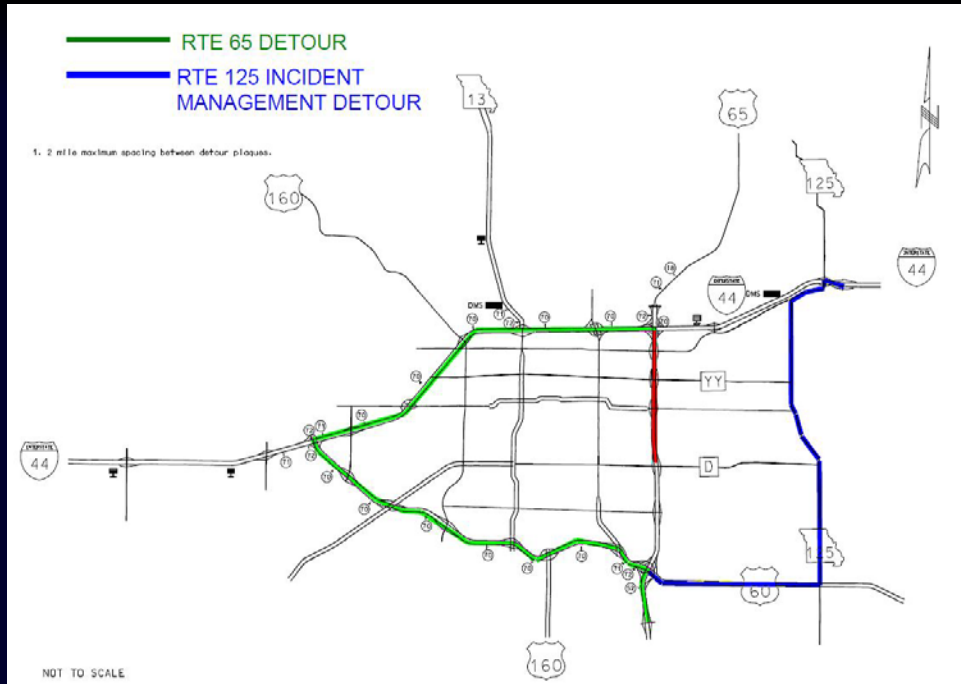
Contractor Disincentive



Keys to Success = Communication



Keys to Success = Traffic Control



Keys to Success = Engagement



Springfield-Greene County Office of Emergency Management shared MoDOT Southwest Missouri's post.
August 18 · 🌐

The Route 65 Rebuild project is nearing completion - kudos to our partners at MoDOT Southwest Missouri for this successful undertaking! Check out the latest details below. 🚧



Stephen Hall and 28 others follow

SAFE KIDS PROGRESSIVE
SafeKidsSpringfield @SafeKidsSpfd · Sep 12
Great work @MoDOT_Southwest for completing the work to make our roadways safer for MO drivers! #Route65REBUILD

MoDOT Southwest @MoDOT_Southwest
A little video to thank #SGF drivers! #Route65REBUILD is OVER! @CityofSgf @SGFChamber @SGFPolice @GreeneCountyMO youtube.be/8cu3SvztU0

Conco Companies shared MoDOT Southwest Missouri's photo.
July 31 · 🌐

Southbound 65 is OPEN! An amazing amount of work was completed to get this done in such a short amount of time. Thanks to all of the staff at Millstone Weber and MODOT! Get ready, because 65 northbound will be closed at Sunshine starting next Monday. Let's hope the weather cooperates for a speedy replacement of those lanes!

ROUTE 65 THE REBUILD

Chief Pennington and 5 others follow

Cara Burch @mindthegapmate · Aug 27
The best part of tonight's Game of Thrones episode? Northbound Hwy 65 is now open. #Route65REBUILD

Kara Daniel @MsKarDan · Aug 10
The 🤖 has loved to see #SGF #Route65REBUILD on our commute this week he's convinced he & Daddy are gonna drive "tractors" & build a road! 🤖

Route 65: THE REBUILD

Construction Phasing/Staging



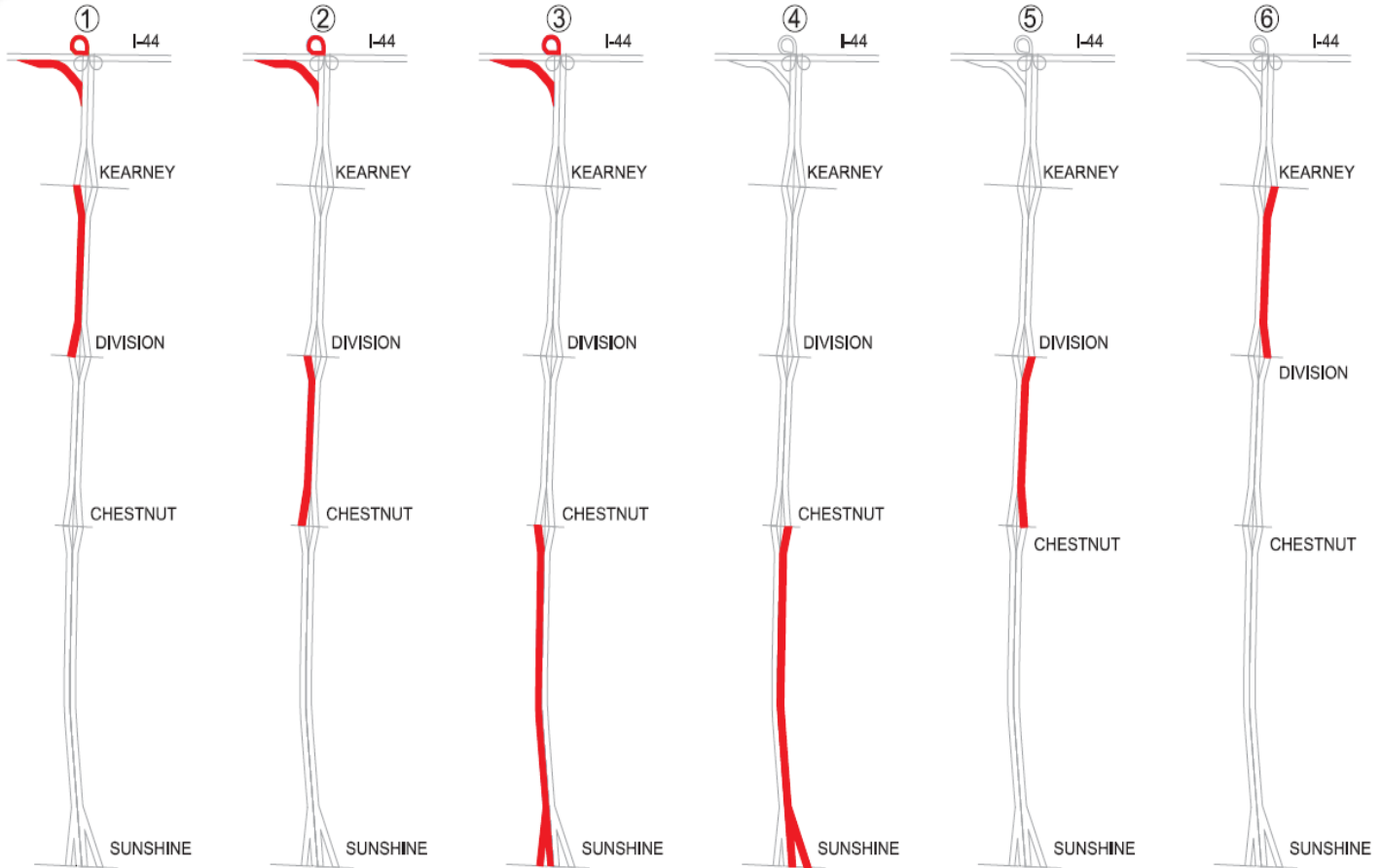
Phasing



US65 Stage Closures

SOUTHBOUND

NORTHBOUND



7 Day Schedule

Maturity Method

- Maturity Curve Established to Determine Strength of Concrete
 - 32 Hours Average for 2500 PSI



Route 65: THE REBUILD

Construction



MILLSTONE
WEBER



Construction Sequencing

- Traffic Switch
- Pavement Rubbilization
- Pavement Removals
- Base Rock
- Concrete Setup
- Mainline Pours
- Ramp Pours

Quantities Highlights

- 7 Miles of Roadway
- 35,000 CY of Concrete
- 110,000 SY of 10” Concrete Pavement
 - 14 Mainline Pours
 - Average Mainline Pour 2800 LF
 - 11 Ramp Accel/Decel Pours

Quantities Highlights

- Total Manhours - 23,000 MH
- Total Trucking Hours
 - Pavement Removals - 3200 Hours
 - Concrete Batching - 3000 Hours

Traffic Switch



Pavement Rubbilization



Pavement Rubbilization



Pavement Rubbilization



Pavement Removals



Pavement Removals



Base Rock



Base Rock



Concrete Setup



Concrete Setup



Concrete Setup



Mainline Paving



Mainline Paving Equipment

- Gomaco 2600 Spreader/Placer
- Gomaco 2800 Paver
 - With Leica Stringless
- Gomaco Texture Cure

Mainline Paving



Mainline Paving



Mainline Paving



Leica Stringless Paving



Ramp Paving

Ramp Paving



Concrete Plant



Concrete Plant

- RexCon Model S Portable Batch Plant
- Optimized Mix
 - Conco Quarries
 - Capital Sand
 - Central Plains Cement
 - Headwaters Flyash
 - GRT Admixtures

Major Subcontractor Items

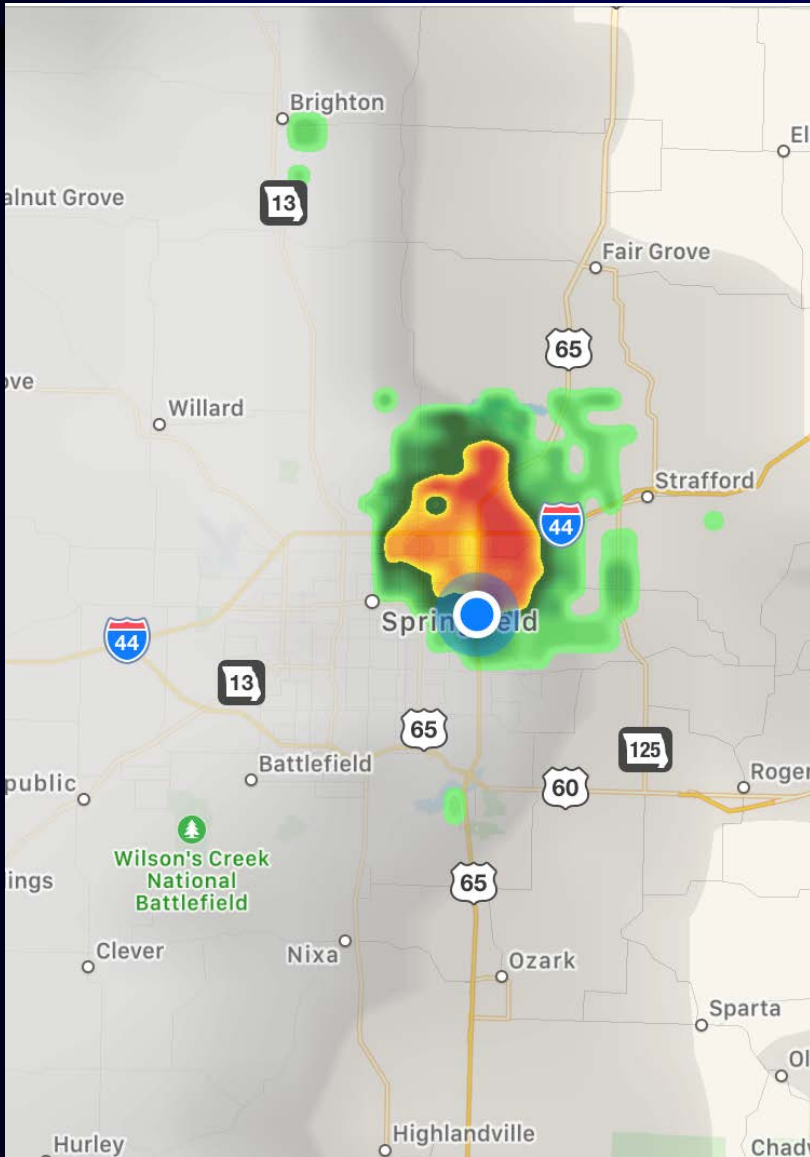
- Guardrail
- Pavement Repairs
- Shoulder Mill & Fill



Challenges

- Weather
 - Rain
 - Heat
- Soft Spots
- Landlocked
- Traffic

Challenges



Challenges

SUN 7/16	MON 7/17	TUE 7/18	WED 7/19	THU 7/20	FRI 7/21	SAT 7/22
Actual Temp 91°/68°	Actual Temp 93°/68°	Actual Temp 92°/70°	Actual Temp 94°/70°	Actual Temp 96°/72°	Actual Temp 97°/72°	Actual Temp 98°/73°

- Heat Index Over 100°

Challenges



Challenges



Challenges

- Soft Spots
 - Removed Existing Material
 - Replaced with Rock Fill Base



Challenges

- Landlocked
 - One Way In / One Way Out



Challenges

- Traffic



Route 65: THE REBUILD

Successes



Successes

- Completed in 42 Days! 10 Days ahead of schedule
- Communication
 - Project Team
 - Public Outreach (Twitter/Emails)
- Minimal Traffic Congestion
- Incentives

Final Product



Successes

- Partnership of Project Team
 - Constant Communication
 - Swift Solutions
 - Coordination of Subcontractors

Coordination of Major Subcontractors and Suppliers



Partnering with local law enforcement



Route 65: THE REBUILD

Your questions



MILLSTONE
WEBER

