



Traffic Management Enhancements Phase 3

City of St. Louis

3/8/2018

Missouri TEAM

TODAY



- What is Traffic Management Enhancements Phase 3?
- Traffic Information Center (TIC)
- Network Design
- Downtown Multimodal Study & Signal Retiming

PRESENTERS



JON DEVES, PE,
PTOE
CBB

Introduction Traffic
Information Center
& Network Design



JACQUE LUMSDEN
CBB

Downtown
Multimodal Study

ABOUT

- Traffic Management Enhancements Phase 1 (2012)
- Traffic Management Enhancements Phase 2 (2015)
- Traffic Management Enhancements Phase 3
 - Congestion Mitigation Air Quality (CMAQ) Grant
 - Three components
 - Network Design and Construction
 - TMC/TIC Staffing
 - Downtown Multimodal Study & Signal Retiming

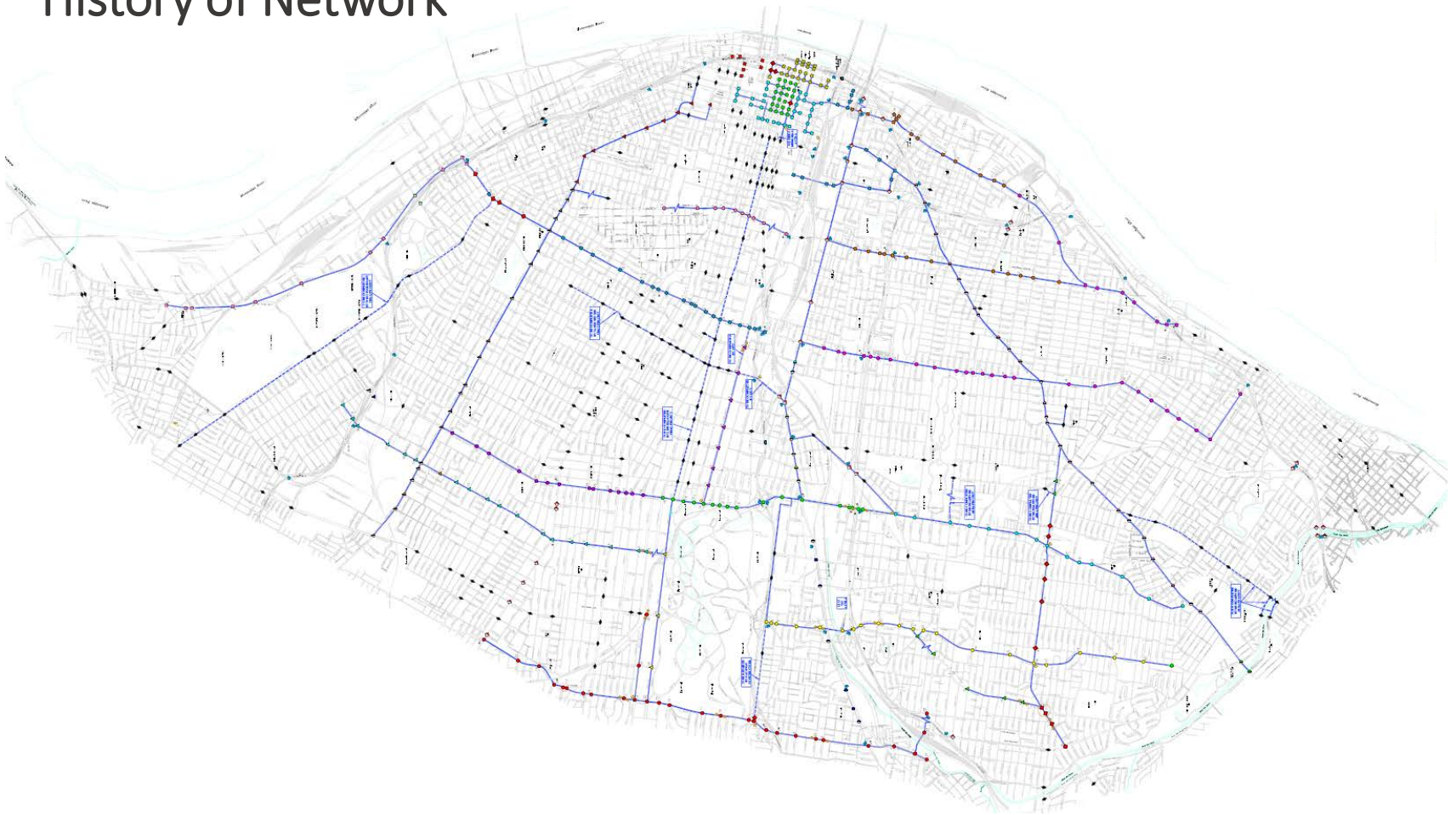


ABOUT



NETWORK DESIGN

- History of Network



NETWORK DESIGN

- Monitoring Stations
 - Traffic Operations Center (TOC)
 - Traffic Information Center (TIC)
 - Secondary Installation at Soldier's Memorial



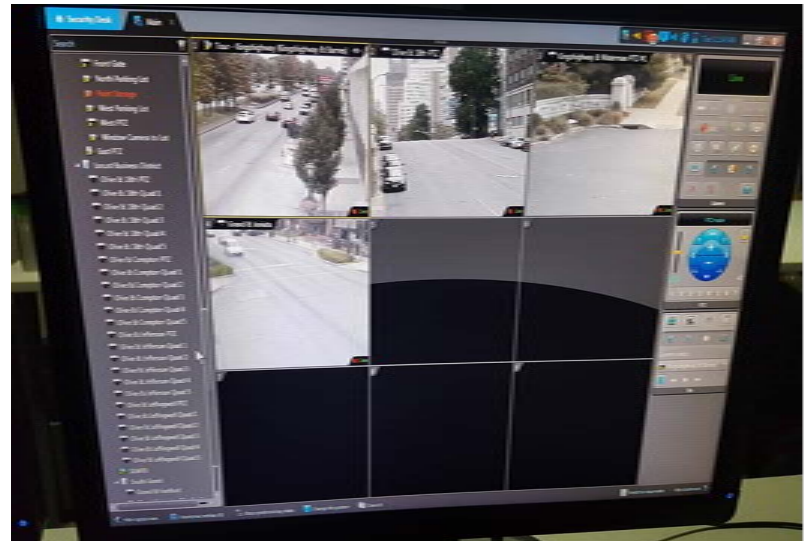
NETWORK DESIGN

Phase 3 Camera Installation



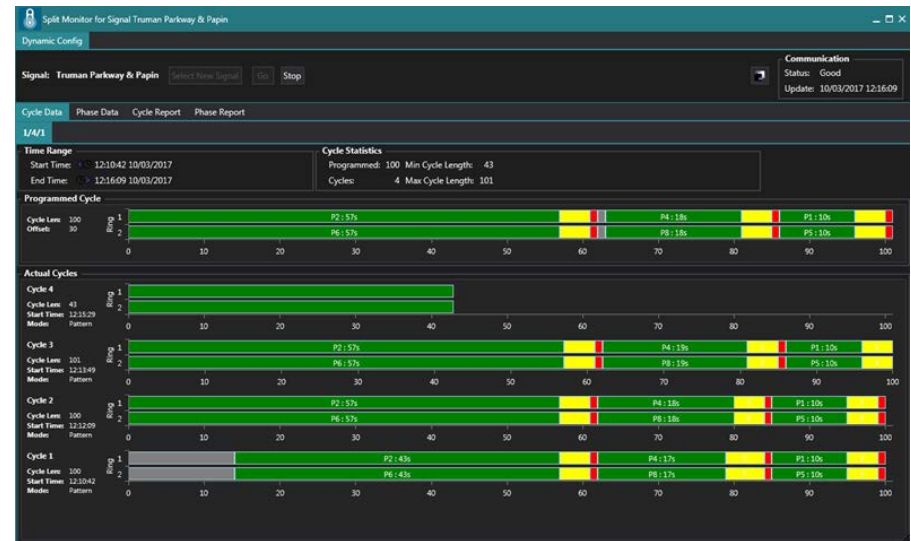
TRAFFIC INFORMATION CENTER

- Staffing
 - Started in March 2017
 - 2 Operators
 - Monday – Friday
 - AM Shift – 5:30AM to 2:00PM
 - PM Shift – 10:30AM to 7:00PM
 - Special Events
 - Special Tasks



TRAFFIC INFORMATION CENTER

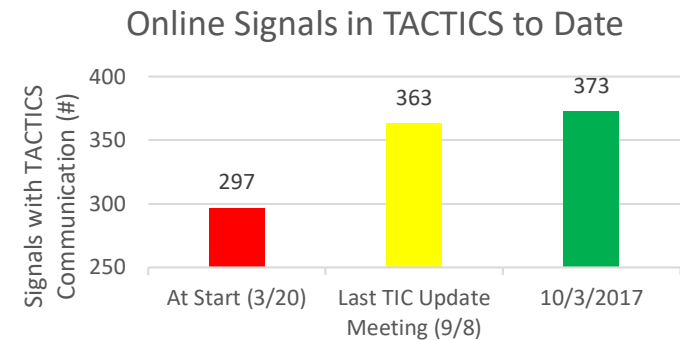
- Day-to-day Operations
 - TACTICS Management/Signal Maintenance
 - Citizen Service Bureau (CSB) Requests/Customer Complaints
 - Special Event Egress & Management
 - Special Tasks



TRAFFIC INFORMATION CENTER

- Tactics Management/Signal Maintenance
 - Improving TACTICS Database
 - Establishing communication with offline signals to bring them under system control (+25% since start)
 - Roughly 525 traffic signals in the city
 - 373 now online
 - Observing traffic via traffic cameras to make timing improvements as needed and respond to incidents if necessary
 - 35 Traffic Cameras

Signal Reports (YTD)			
Open	Closed	Total	Percent Closed
0	505	505	100 %



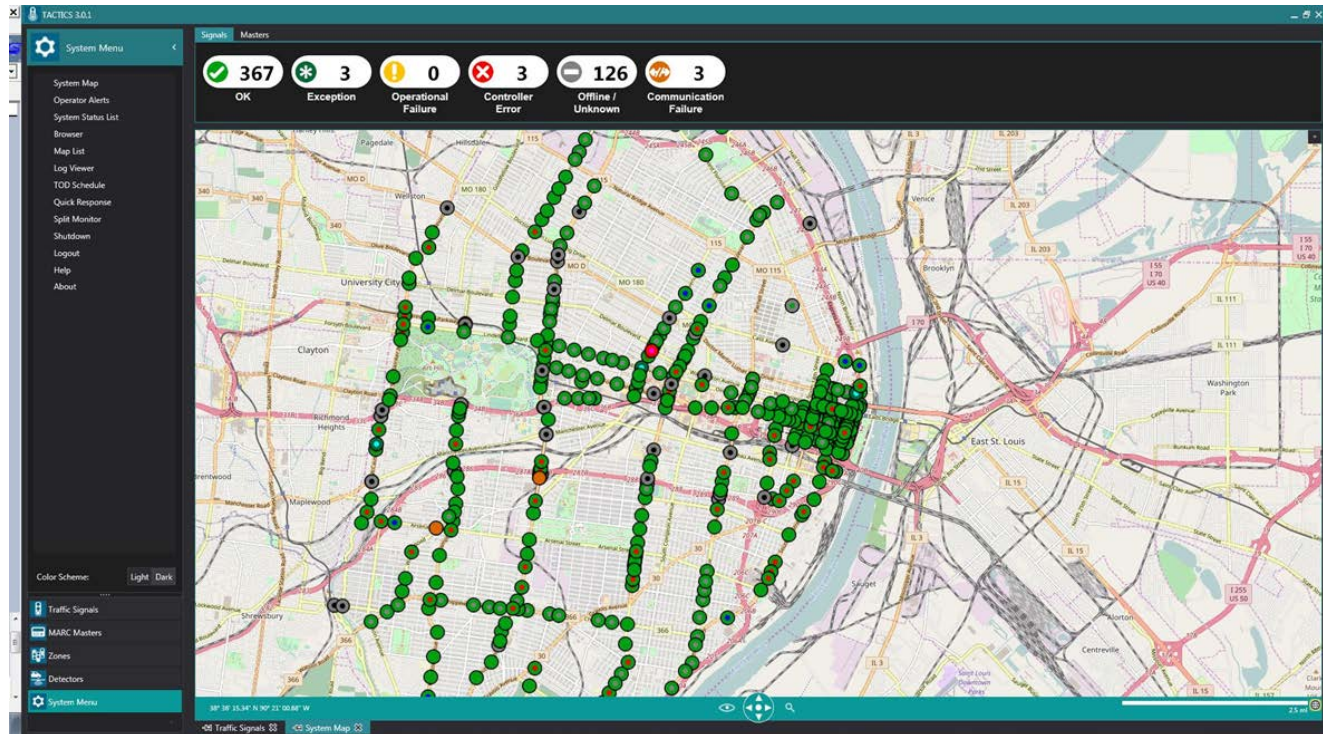
TRAFFIC INFORMATION CENTER

- Special Event Management
 - St. Louis Cardinals Egress
 - St. Louis Blues Egress
 - Forest Park Events
 - Fair Saint Louis – STAFFED EVENT
 - Balloon Glow – STAFFED EVENT
 - LouFest
 - Twilight Tuesdays



TRAFFIC INFORMATION CENTER

- Special Event Management
 - Quick Response
 - TACTICS feature that activates special timing plans based on a predetermined set of “triggers”



TRAFFIC INFORMATION CENTER

- Special Tasks
 - Pedestrian Timing Improvements
 - Evaluating Pedestrian Timing throughout the city and making improvements when possible to improve pedestrian safety.
 - Completing evaluation by arterial
 - Signal Detection Inventory/ Recommendations
 - Conducting field inventory of detection along major arterials
 - Recommending locations for detection improvements to the City



MULTIMODAL STUDY



DOWNTOWN **ST** Louis *(enhancing multimodal options)*
TRANSPORTATION STUDY

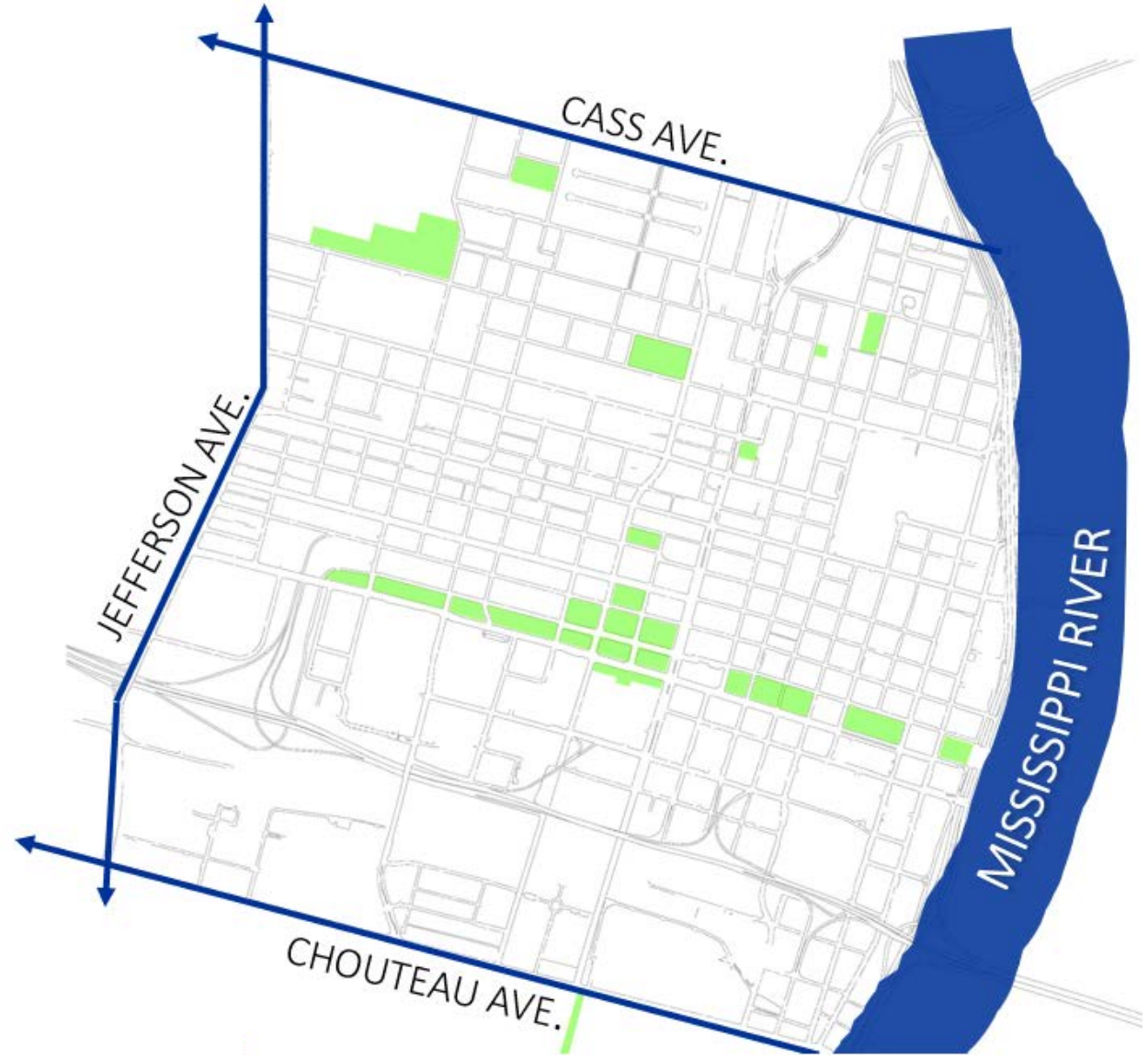


MULTIMODAL STUDY

The **Downtown Multimodal Study** is one component of a three part Congestion Mitigation Air Quality (CMAQ Grant) project of the City of St. Louis. The project also includes Traffic Information Center Staffing, as well as a System Buildout. The **Downtown Multimodal Study** component includes a signal timing plan, developing recommendations for a robust multimodal transportation network, including a Downtown bike plan.



ABOUT





MULTIMODAL STUDY

VISION

“ A robust multimodal system that enhances connections for pedestrians, bicyclists, transit users and motorists, of all ages and abilities, while improving quality of life, supporting economic growth and community development, easing congestion and bettering air quality, and improving public health ”

MULTIMODAL STUDY

2017

- Feb: Project Kickoff
- Feb – April: Data Collection
- April: Stakeholder Engagement
- April – September: Infrastructure Inventory & Alternative Analysis
- September: Engagement Week Workshops
- September – January: Alternative Refinement

2018

- January: Public Meeting
- January – March: Update Recommendations & Alternatives
- March: Final Report & Recommendations



MULTIMODAL STUDY

Engagement Week 1 – April 2017

STAKEHOLDER ENGAGEMENT WEEK SCHEDULE

MON 4/10	TUES 4/11	WED 4/12	THURS 4/13
Downtown STL, Inc.	SLDC / Planning & Urban Design	Bicycle & Pedestrian	Emergency Services
Downtown Neighborhood Association	NGA Team & Project Connect	ADA	Parking
CVC – Tourism/ Special Events	Urban Strategies / Choice Neighborhoods	Major Downtown Institutions	
N/S Metrolink Study	Business & Developers	Public Transportation	City Departments
Trailnet Vision Team.	Incubator Hubs	Freight	Open Group Discussion



- Stakeholder groups (19) invited to for issue identification discussion, as well as existing conditions
- 75 attendees / 40 organizations
- Project vision & multimodal plan elements
- Coordination with current planning efforts
- Goals, objectives, strategies and elements
- Mode maps
- Data collection & infrastructure inventory ongoing

MULTIMODAL STUDY

Goals



MULTIMODAL STUDY

Objectives

OBJECTIVES

Event Traffic Management



Multi-modal Connections & Circulation



Safety



ADA Accessibility



Mode Shift



Security



Placemaking



MULTIMODAL STUDY

Strategies & Elements

(measurable)

- Policy/Operations
- Technology
- Wayfinding
- Bike
- Pedestrian
- Transit
- Traffic Management
- Parking Management
- Public/Stakeholder Communication
- Policing
- Hot Spots
- Corridors
- Development Plan Coordination



MULTIMODAL STUDY

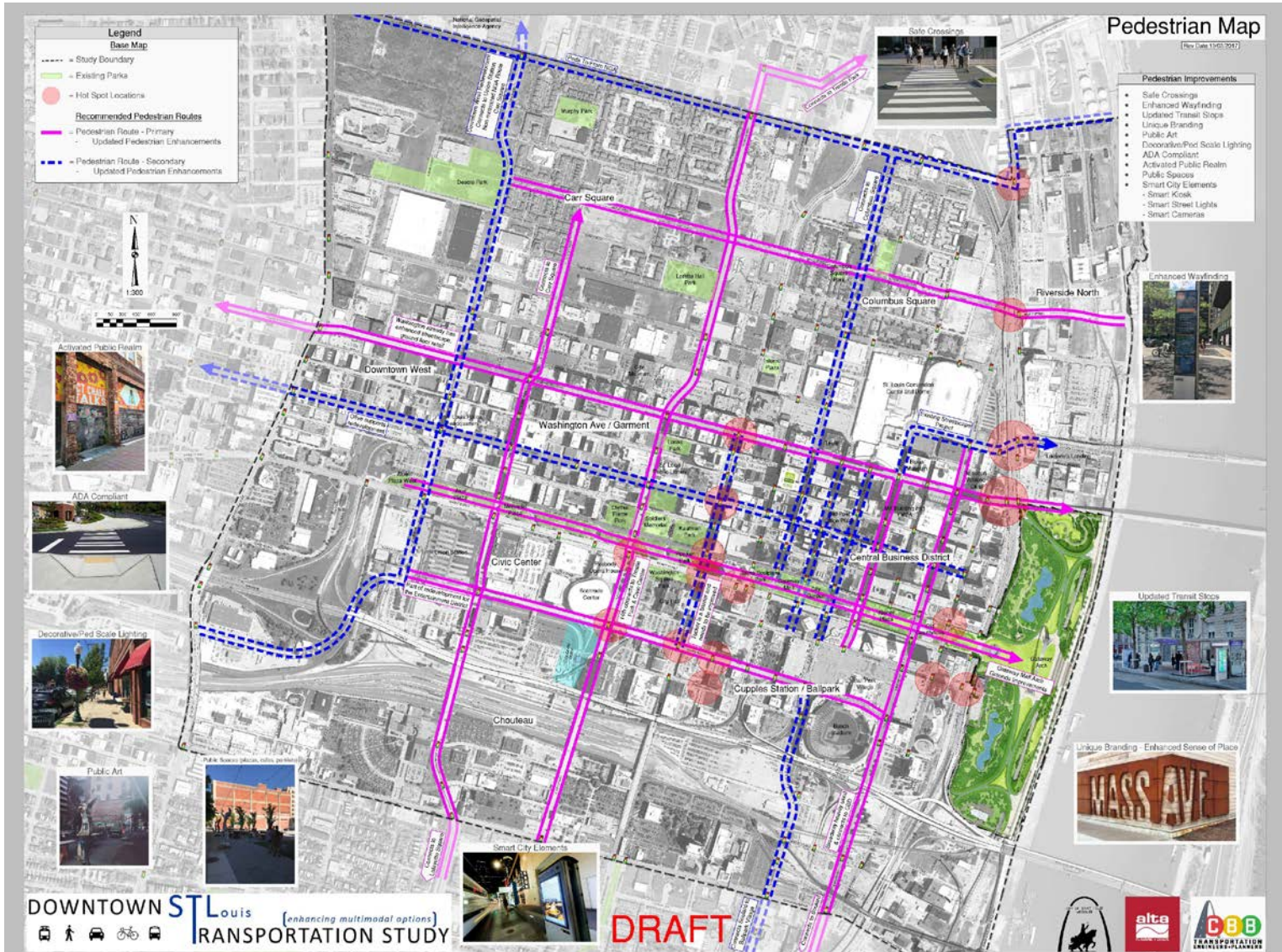
Engagement Week 2 – September 2017

	MON 9/18	TUES 9/19	WED 9/20	THURS 9/21
9:30 AM - NOON	BIKE <i>BREAK/TEAM WORKING SESSION</i>	EVENT TRAFFIC MANAGEMENT / TRAFFIC <i>BREAK/TEAM WORKING SESSION</i>	TRANSIT <i>BREAK/TEAM WORKING SESSION</i>	HOT SPOT LOCATIONS <i>BREAK/TEAM WORKING SESSION</i>
1:30PM - 4:30PM	PEDESTRIAN	PARKING	TECHNOLOGY	POLICY ISSUES (FREIGHT/TRAVEL DEMAND/CURBSIDE MANAGEMENT)
5:30PM - 8:00PM	GENERAL EVENING SESSION			



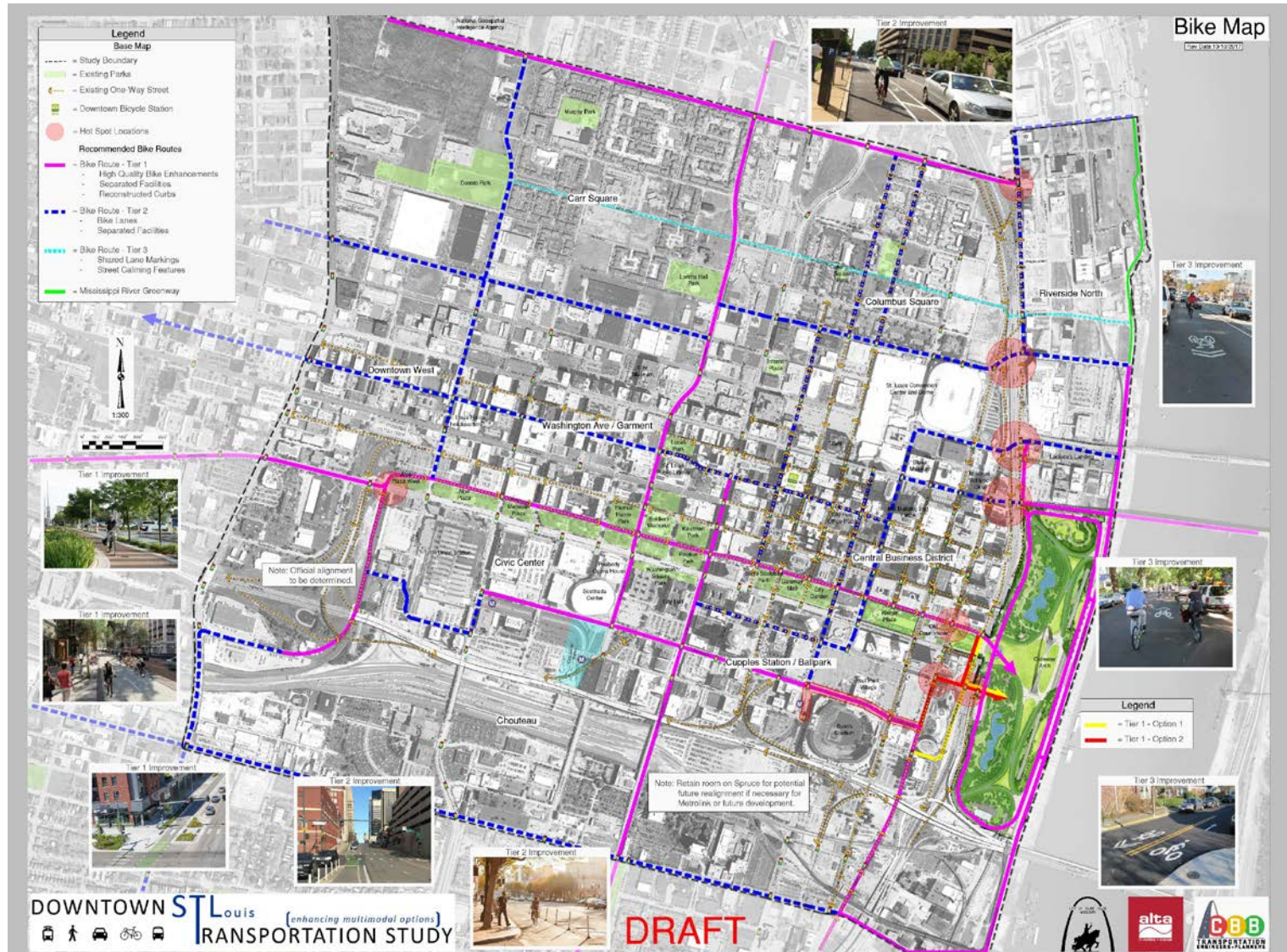
MULTIMODAL STUDY

Mode Maps: Pedestrian



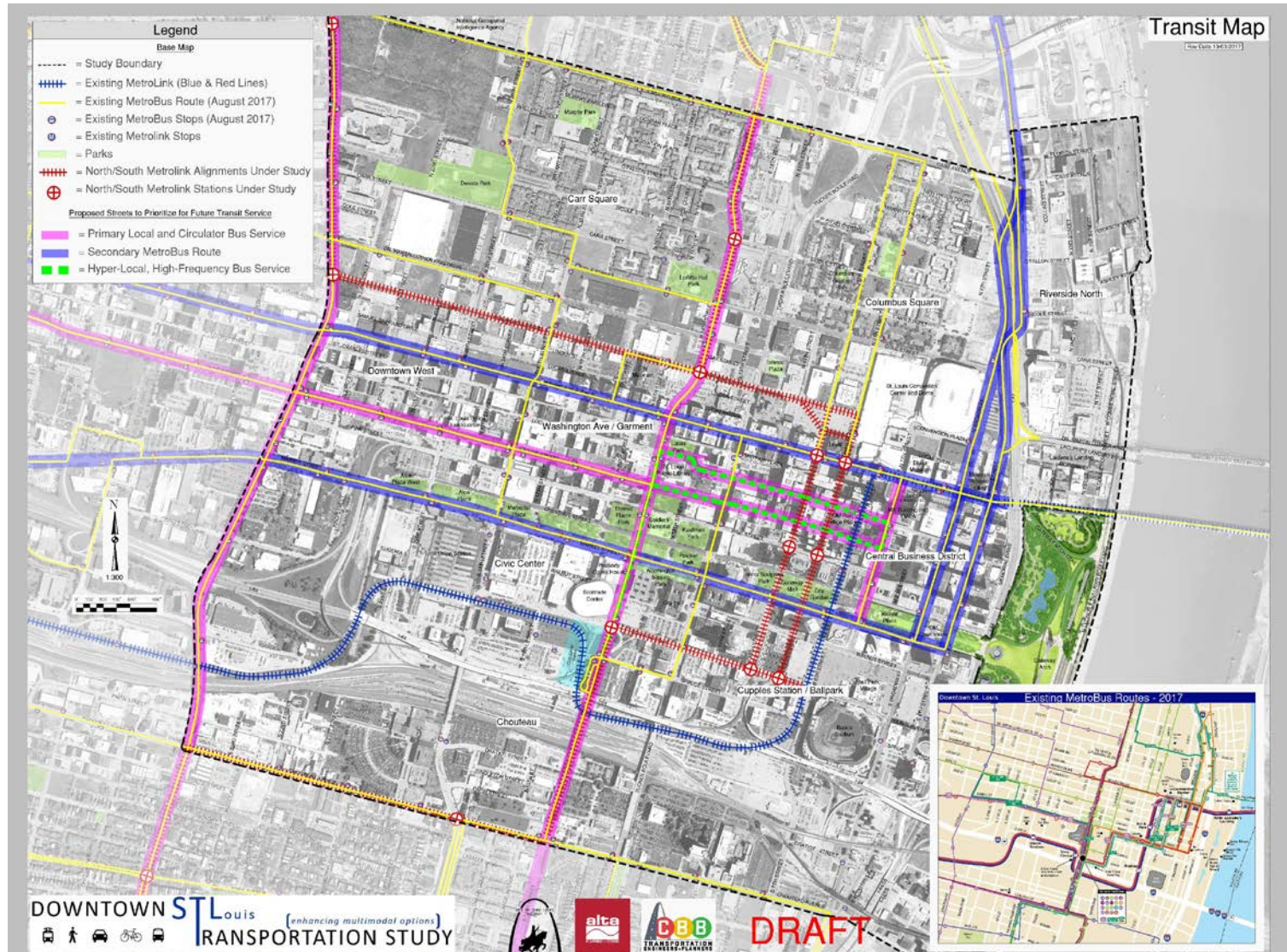
MULTIMODAL STUDY

Mode Maps: Bicycle



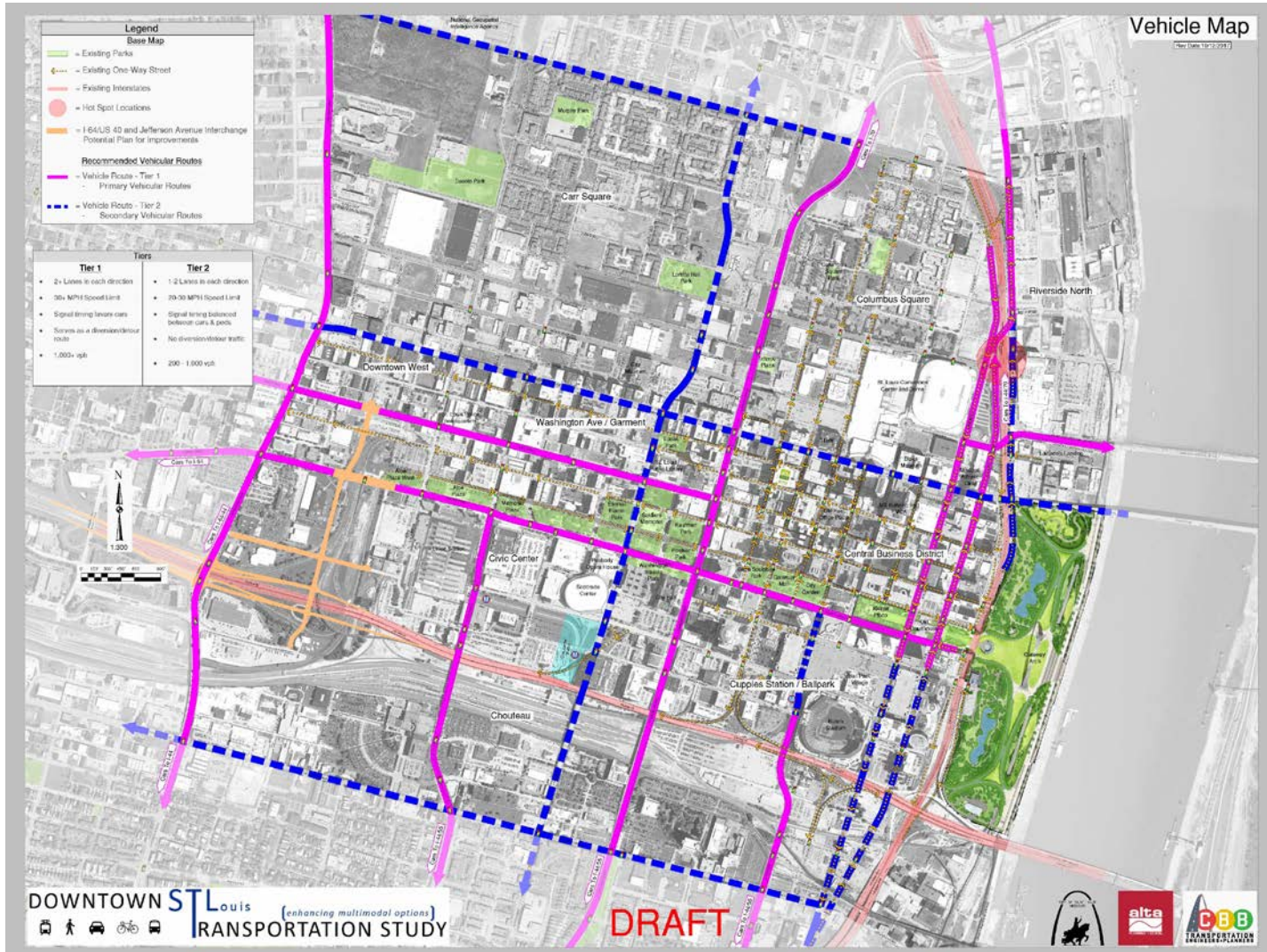
MULTIMODAL STUDY

Mode Maps: Transit



MULTIMODAL STUDY

Mode Maps: Vehicle



MULTIMODAL STUDY

Public Open House – January 19, 2018



DOWNTOWN MULTIMODAL STUDY

OPEN HOUSE – January 19th, 2018

City Hall Rotunda (1200 Market), 8am – 2pm

Can't join live? Join us on Twitter! @STLMoves with your questions.
All open house material can be found online at www.downtownstltransportationstudy.com

Contact Jacque Lumsden at JLumsden@cbbtraffic.com, or (314) 449-9565 with any questions
City of St. Louis Project Manager: Dan Buschmeyer, Board of Public Service

DOWNTOWN ST LOUIS TRANSPORTATION STUDY (enhancing multimodal options)

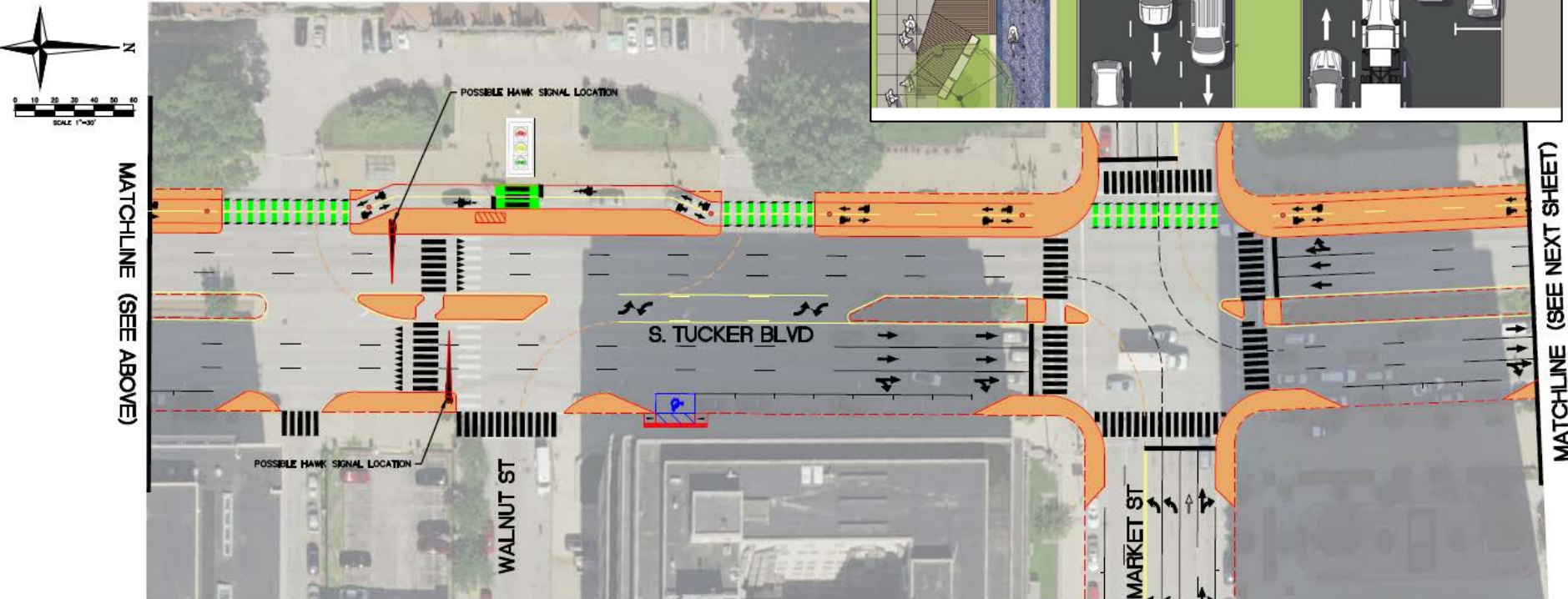
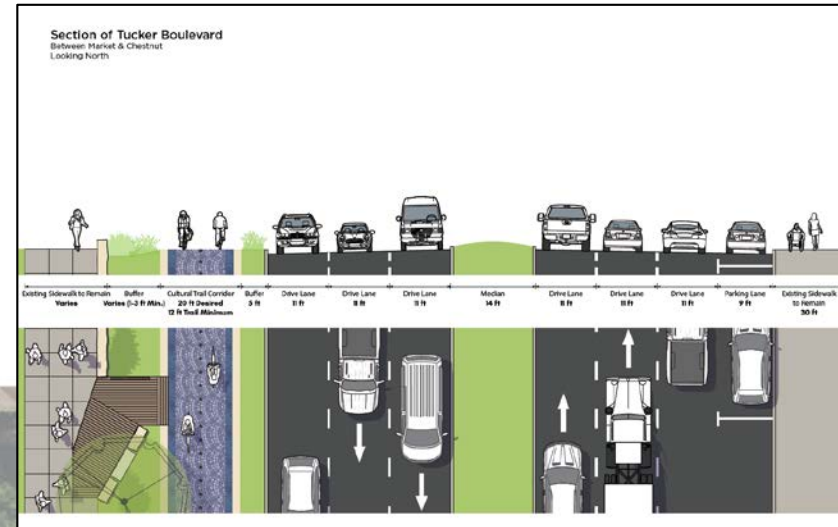
If any accommodations are needed, please contact Jacque Lumsden at 314-449-9565 or at jlumden@cbbtraffic.com prior to the scheduled meeting.



MULTIMODAL STUDY

Public Open House – January 19, 2018

- Strip Maps (Clark & Tucker)
- Cross Sections (Tier 1, 2 & 3)
- Strategies & Elements / Mode Maps
- Policy Actions & Immediate Opportunities



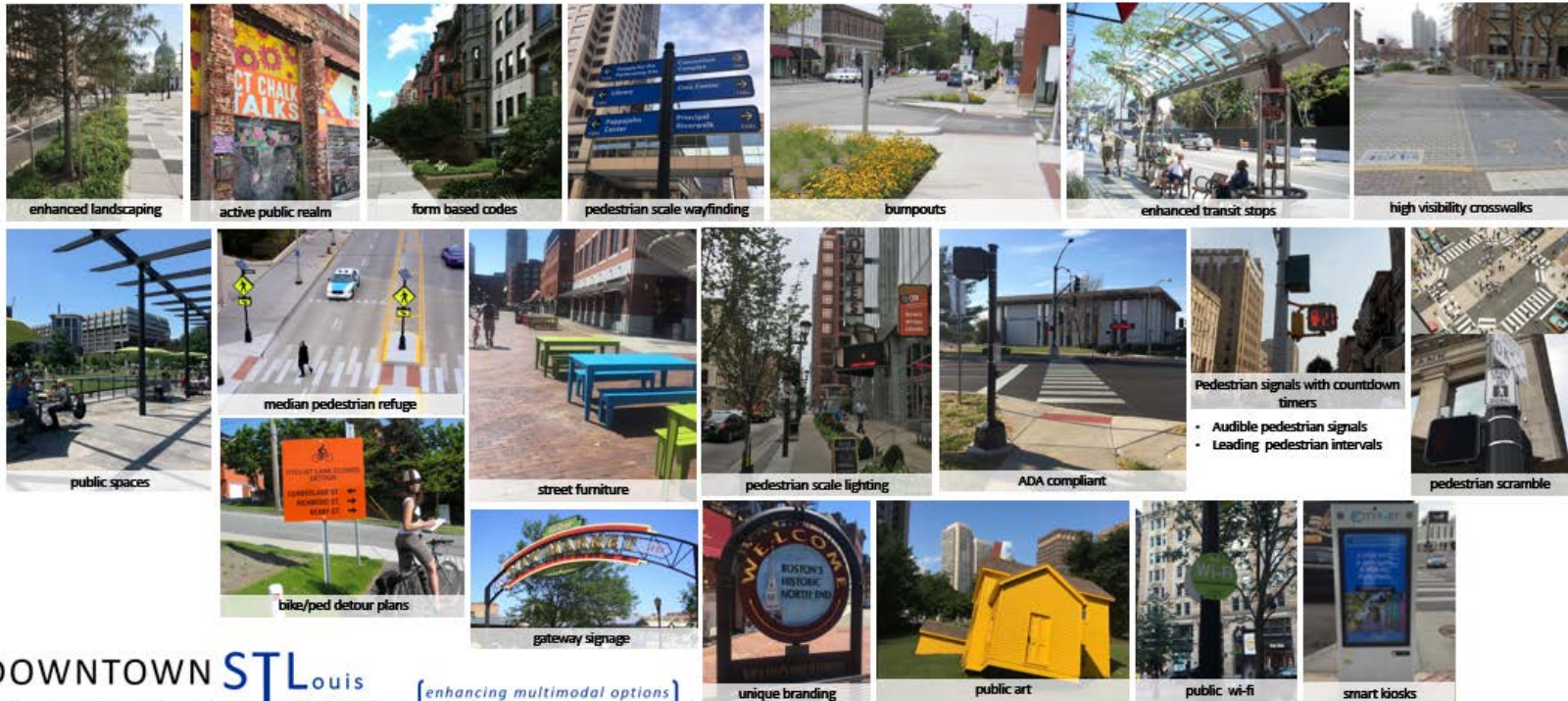
MULTIMODAL STUDY

Public Open House – January 19, 2018

DOWNTOWN MULTIMODAL STUDY



PEDESTRIAN TREATMENTS (STRATEGIES & ELEMENT RECOMMENDATIONS)



MULTIMODAL STUDY

Public Open House – January 19, 2018

DOWNTOWN MULTIMODAL STUDY



IMMEDIATE OPPORTUNITIES

- Increased Bike Parking
 - Rack program advertisement
 - Corral implementation
 - Work with new developments
 - Bike share operators
 - Transit stops
- Parklets
 - Washington Avenue
 - Tucker
- Wayfinding – implement CVC next phase
- Lighting Updates
- Ongoing update of pedestrian signals and ramps
- Public Art
 - Washington at 44
 - Metrolink/Metrobus stops
 - Public space murals
- Pilot Programs
- Web based app street closure (with permits)



POLICY ACTIONS

WHAT: Update City policy to implement recommendations that encourage mode shift and enhance mobility.

WHY: Recommendations found within this study include strategies and elements that require updated City policy for optimal implementation

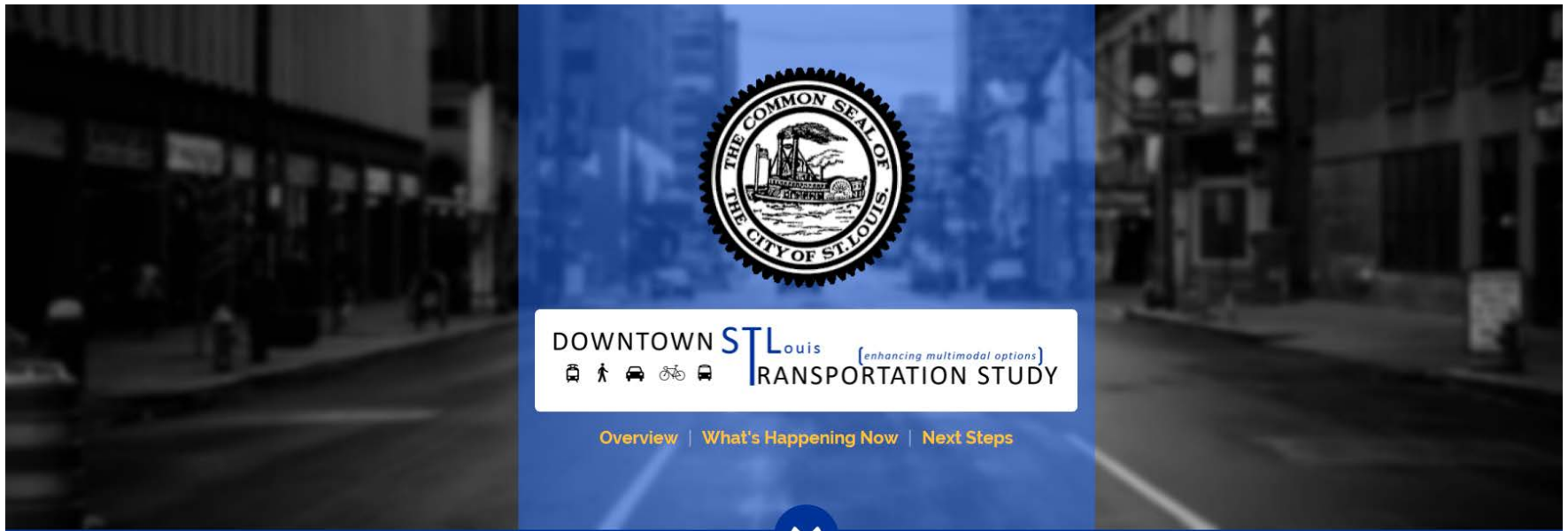
POLICIES TO UPDATE:

- Event traffic management
- Off-peak freight delivery
- Demand responsive on-street parking pricing
- Complete Streets design & implementation
- Form Based Codes
- Consider elimination of parking minimums in non – Central Business District areas along tier 1 bicycle and transit routes

THANKS!

- Questions?

www.downtownstltransportationstudy.com



Project Intro/Overview

Vision, Goals, Objectives

Timeline – Where We Are At

Project Limits

Who Has Been Involved (Week One Overview)