



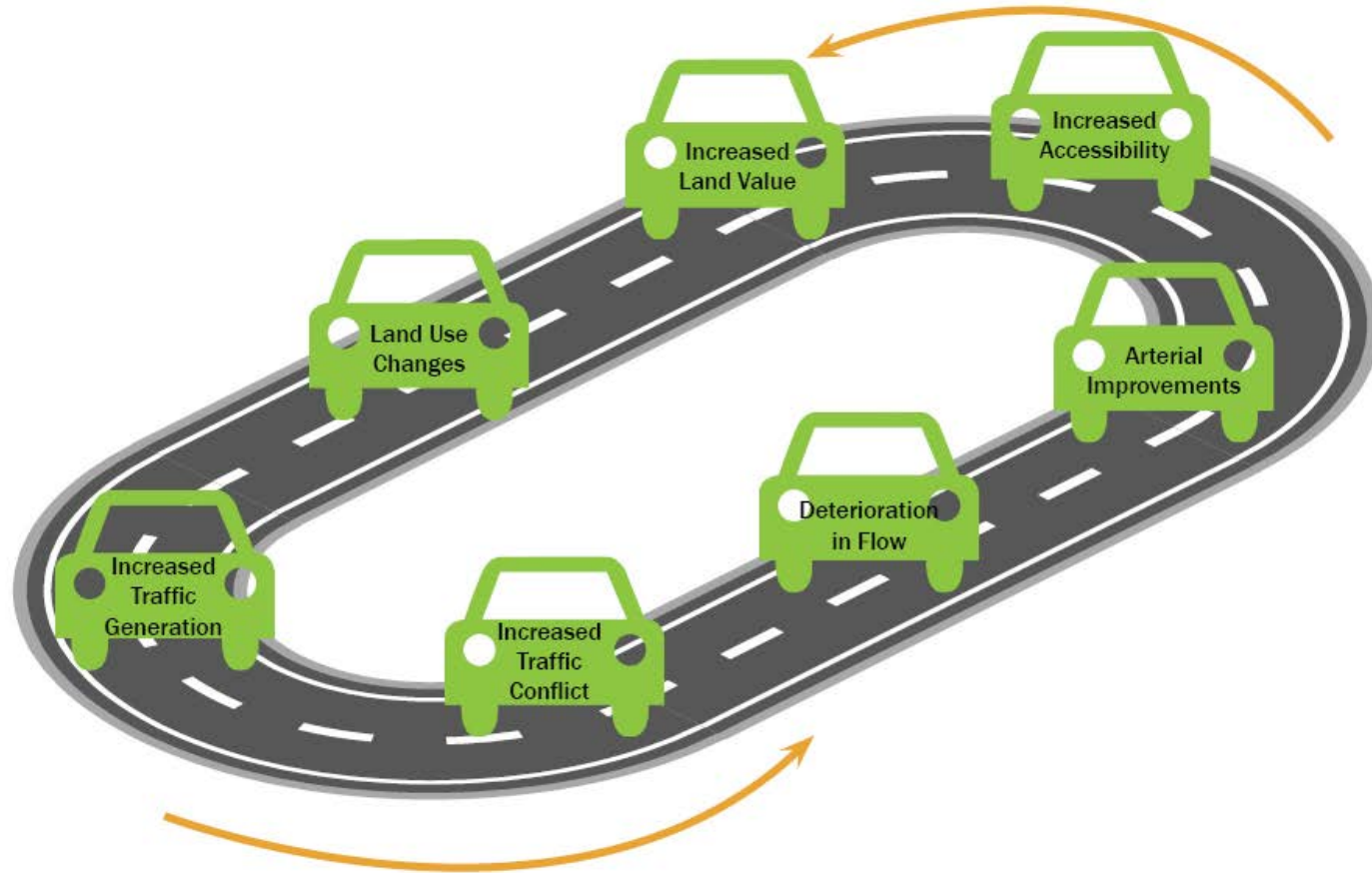
# Access Management = Economic Development

*A SUCCESS STORY*

*Mike McKenna, PE, PTOE, ENV SP, Principal*



# The Development Racetrack



---

# What is Access Management?

Access management is the proper planning and design of access to the public roadway system that helps ensure traffic flow more smoothly, with fewer crashes, which means everyone travels safer.

- MoDOT



*The control of the location, spacing, design, and operations of connections to a roadway.*

- Transportation Research Board



# Connections to a Roadway

- ✓ Driveways – home or business
- ✓ Intersections with public roadways
- ✓ Pedestrians and bicyclists



---

# Benefits of Access Management

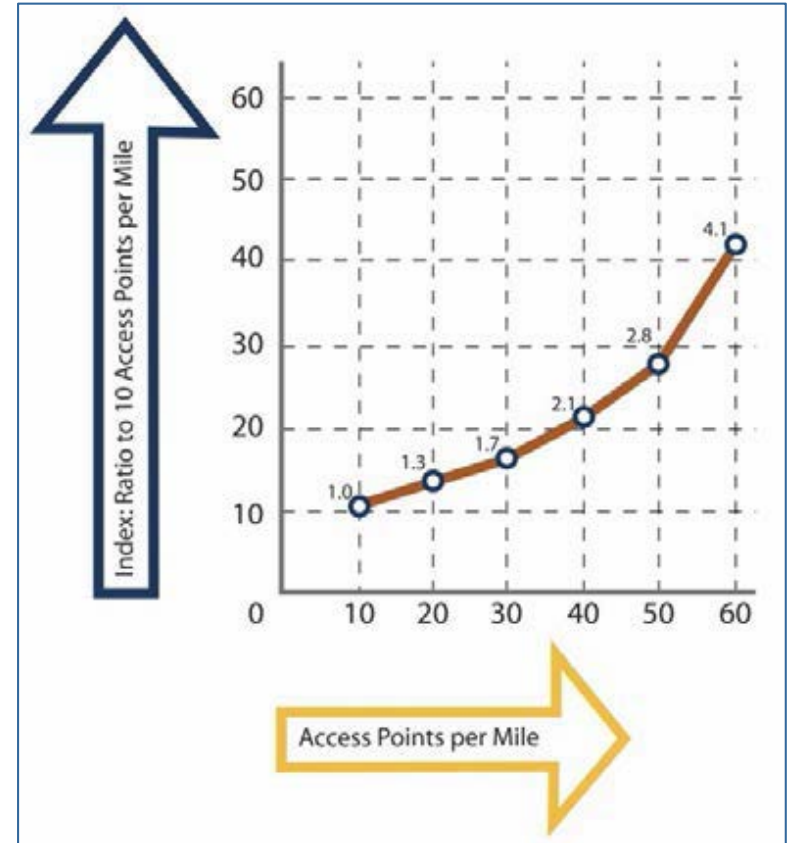
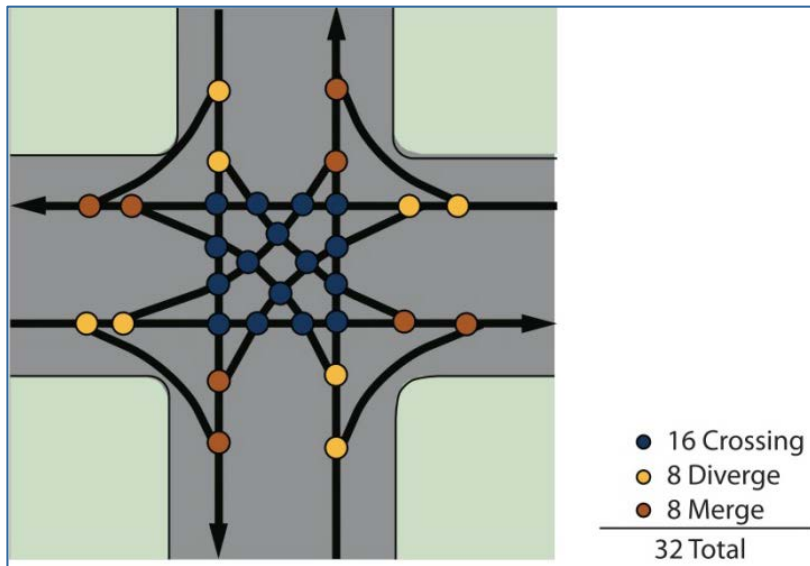
- ✓ Safety
- ✓ Efficiency
- ✓ Economic activity

## Access Management Activities:

- ✓ Access planning
- ✓ Transportation engineering
- ✓ Coordination and awareness
- ✓ Access permitting

# Safety

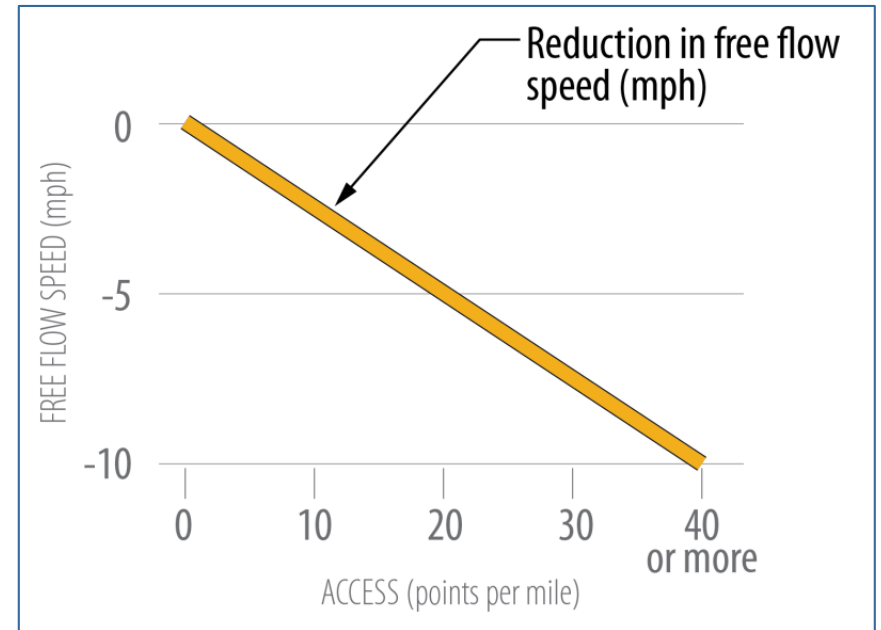
- ✓ Fewer conflict points
- ✓ Lower crash rates
- ✓ FHWA – approved



More Access Points = More Crashes

# Efficiency

- ✓ Connections add friction
- ✓ Decreased travel speeds
- ✓ Reduces capacity

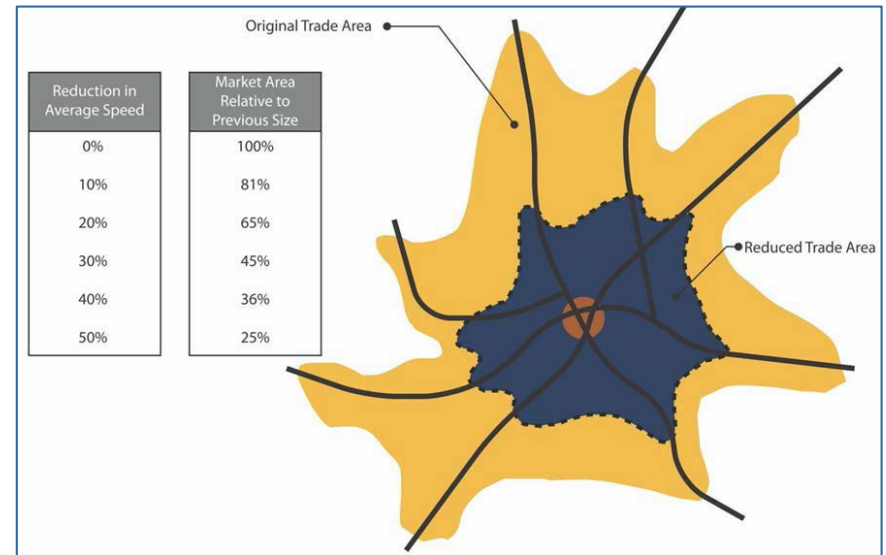


More Access Points = Lower Speed

# Economic Activity

- ✓ Good transportation environment
  - ▶ Safe
  - ▶ Efficient
- ✓ Good for business!

*“One study in Texas indicated that corridors with access control improvements experienced an 18 percent increase in property values after **construction.**”*  
*-Federal Highway Administration*

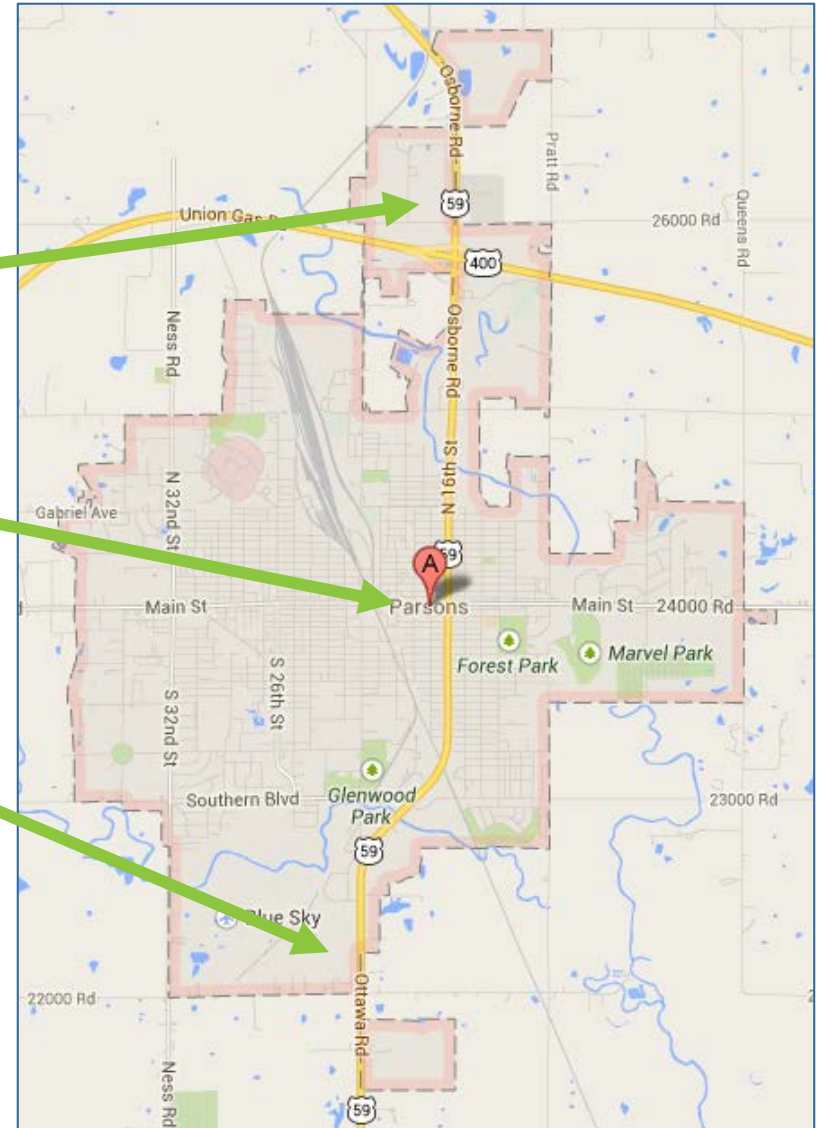


Lower Speeds = Smaller Trade Area



# US-59 Parsons Access Management Plan

- ✓ Three distinct areas
  - ▶ North end of Town
  - ▶ Possible Geometric recommendations near downtown
  - ▶ South End of Town



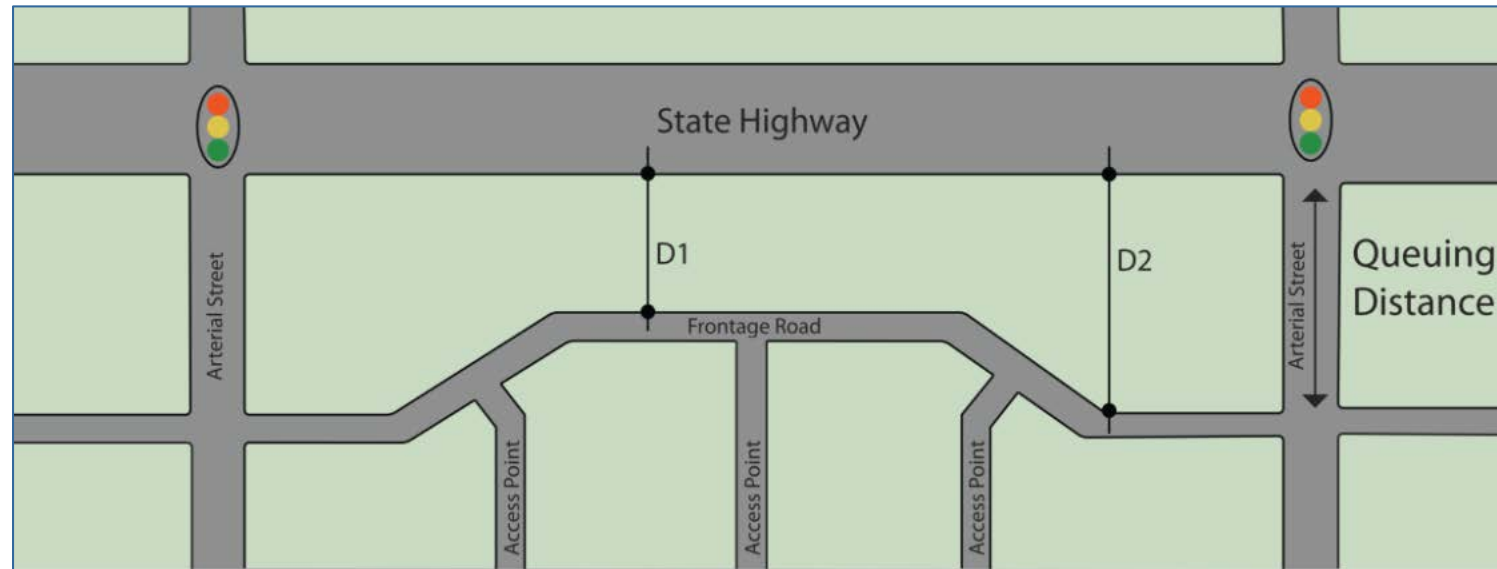
# Parsons Team

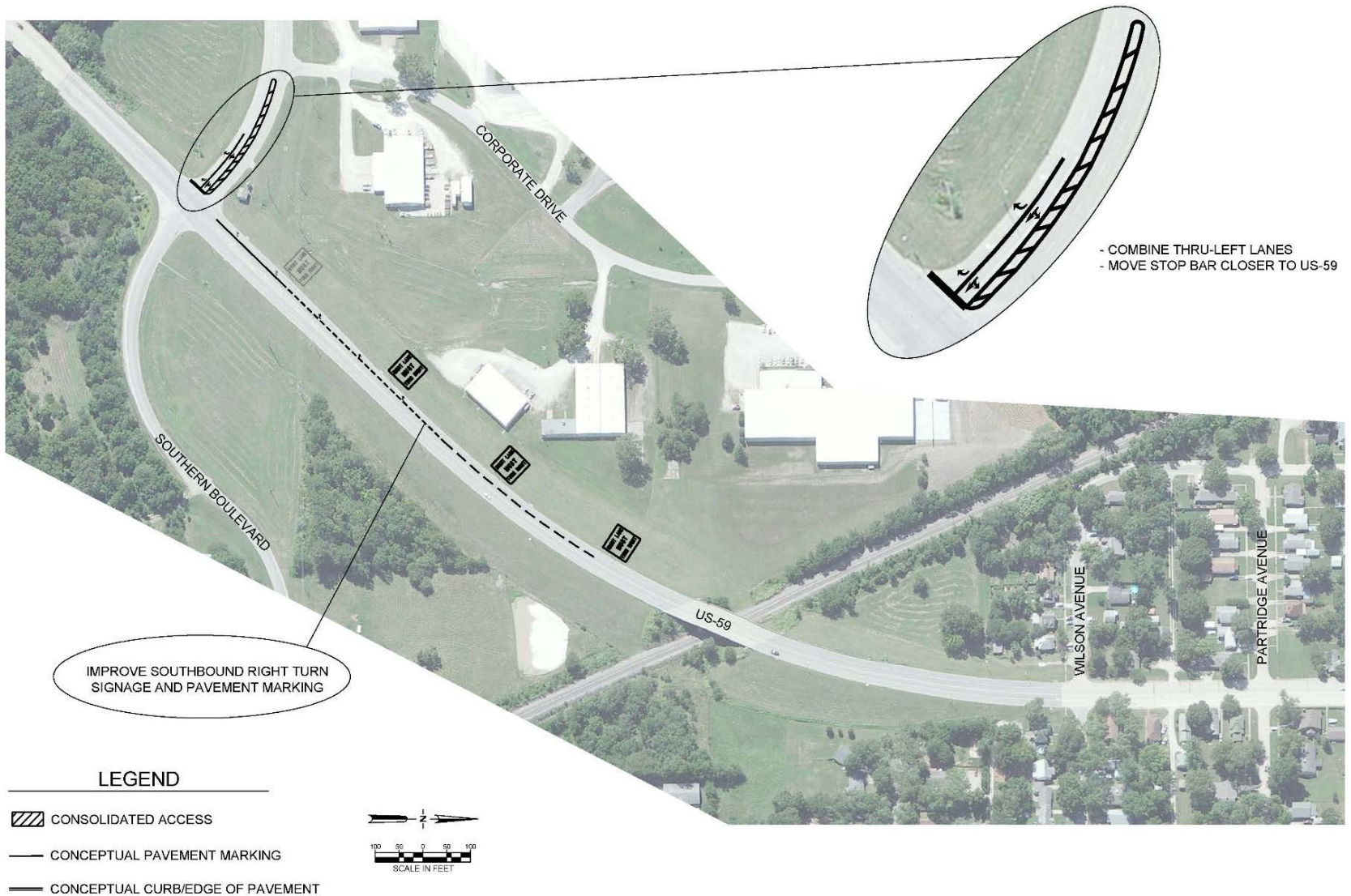
<b>City of Parsons</b>	
<b>Darrell Moyer</b> Director of Engineering 620-421-7020	Debbie Lamb City Clerk & Acting City Manager 620-421-7060
Martha Wilkerson Planning Administrator	
<b>Kansas Department of Transportation</b>	
David Gurss Access Management Manager	Jessica Upchurch, PE Access Management Engineer
<b>Wayne Gudmonson, PE</b> District Engineer 620-431-1000	<b>George Dockery, PE</b> Area Engineer 620-231-7560
<b>Affinis Corp</b>	
Lee Baer, PE 913-239-1137 lbaer@affinis.us	Mike McKenna, PE, PTOE 913-239-2281 mmckenna@affinis.us

Local Champions = Blue

# Typical Recommendations

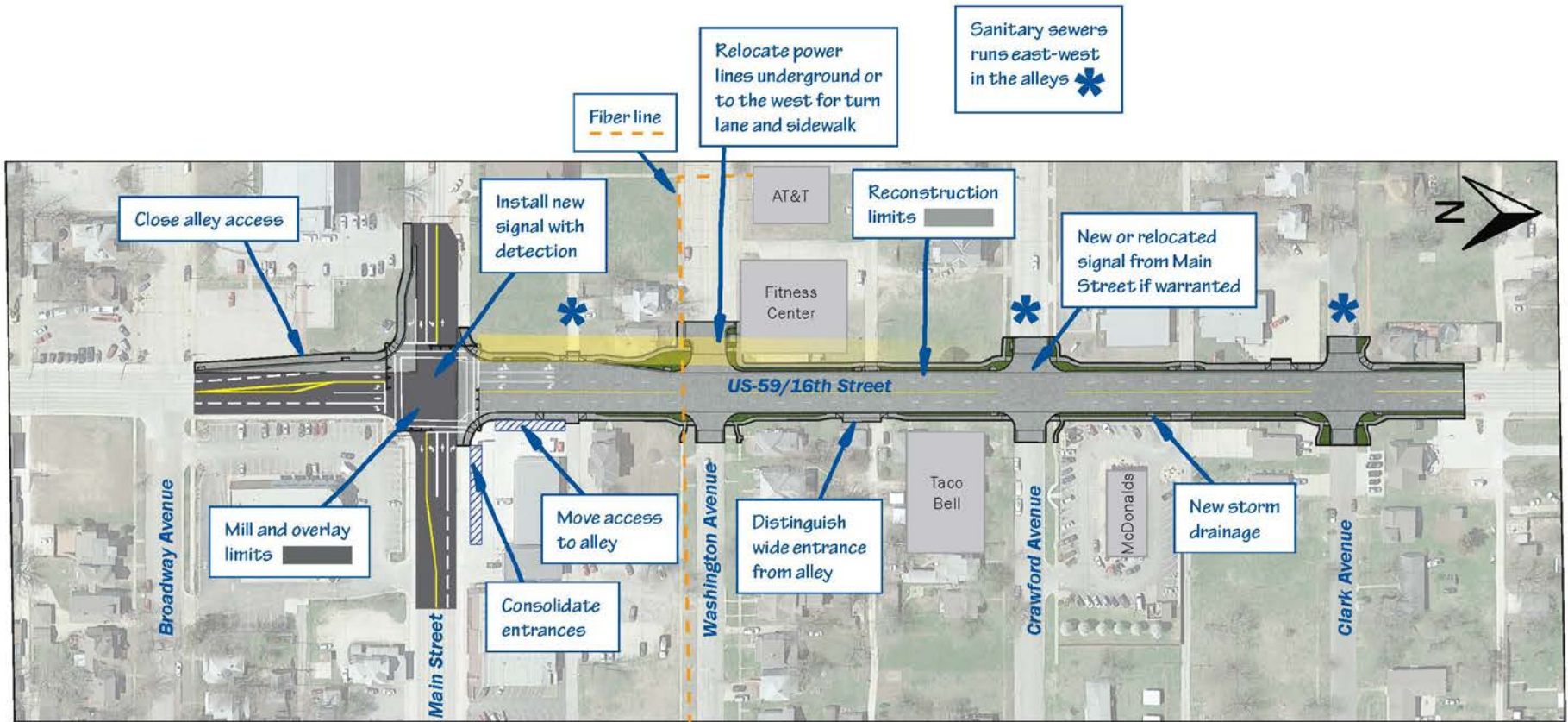
- ✓ Turn lanes
- ✓ Traffic signals/roundabouts
- ✓ Various intersection improvements
- ✓ Frontage roads
- ✓ Shared driveways





# Case Study: Parsons, Kansas





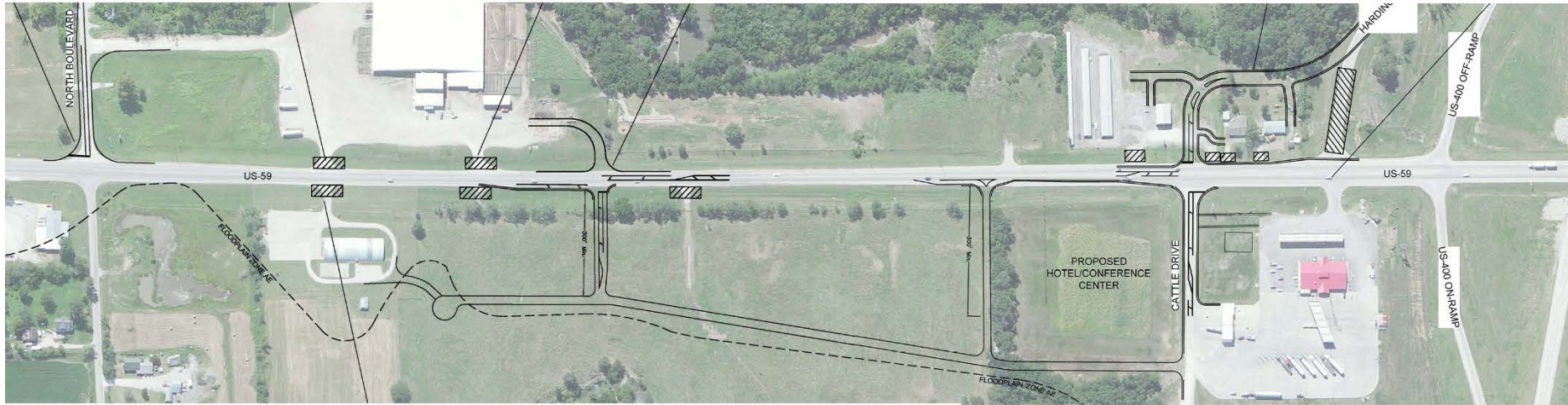
## Case Study: Parsons, Kansas



# Signalizing the Intersection at Union Road

- ✓ Reduce risk of right angle crashes
- ✓ Improve traffic flow
- ✓ Enhance economic growth





## Case Study: Parsons, Kansas

---

## Current Construction

- ✓ Roadway network around future hotel and conference center site



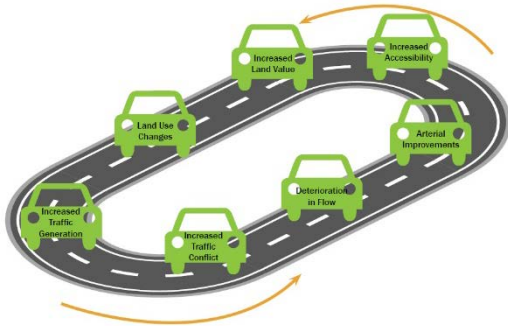
Before



During Construction



# The Development Race



- ✓ There is no finish line when it comes to development.
- ✓ But, there are ways to win.





# Questions?